

Datasheet for ABIN651199  
**anti-AP1S1 antibody (N-Term)**

## 3 Images

[Go to Product page](#)

## Overview

Quantity:	400 µL
Target:	AP1S1
Binding Specificity:	AA 5-34, N-Term
Reactivity:	Human
Host:	Rabbit
Clonality:	Polyclonal
Conjugate:	This AP1S1 antibody is un-conjugated
Application:	Western Blotting (WB), Flow Cytometry (FACS), Immunohistochemistry (Paraffin-embedded Sections) (IHC (p))

## Product Details

Immunogen:	This AP1S1 antibody is generated from rabbits immunized with a KLH conjugated synthetic peptide between 5-34 amino acids from the N-terminal region of human AP1S1.
Clone:	RB25813
Isotype:	Ig Fraction
Predicted Reactivity:	B, M
Purification:	This antibody is purified through a protein A column, followed by peptide affinity purification.

## Target Details

Target:	AP1S1
---------	-------

## Target Details

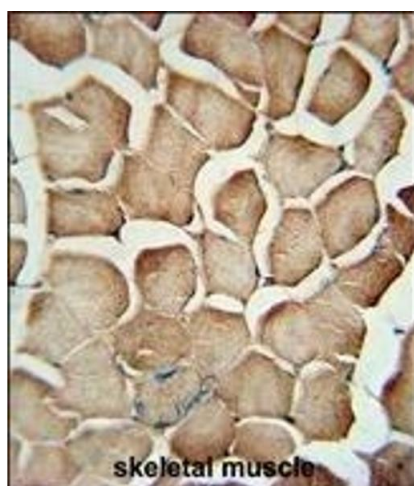
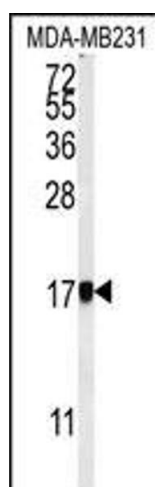
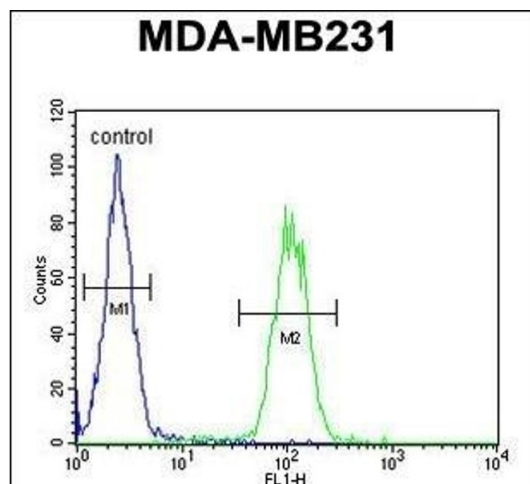
Alternative Name:	AP1S1 ( <a href="#">AP1S1 Products</a> )
Background:	AP1S1 is part of the clathrin coat assembly complex which links clathrin to receptors in coated vesicles. These vesicles are involved in endocytosis and Golgi processing. This protein, as well as beta-prime-adaptin, gamma-adaptin, and the medium (mu) chain AP47, form the AP-1 assembly protein complex located at the Golgi vesicle.
Molecular Weight:	18733
Gene ID:	1174
NCBI Accession:	<a href="#">NP_001274</a>
UniProt:	<a href="#">P61966</a>

## Application Details

Application Notes:	WB: 1:1000. IHC-P: 1:50~100. FC: 1:10~50
Restrictions:	For Research Use only

## Handling

Format:	Liquid
Buffer:	Purified polyclonal antibody supplied in PBS with 0.09 % (W/V) sodium azide.
Preservative:	Sodium azide
Precaution of Use:	This product contains Sodium azide: a POISONOUS AND HAZARDOUS SUBSTANCE which should be handled by trained staff only.
Storage:	4 °C,-20 °C
Storage Comment:	Maintain refrigerated at 2-8 °C for up to 6 months. For long term storage store at -20 °C in small aliquots to prevent freeze-thaw cycles.
Expiry Date:	6 months



### Flow Cytometry

**Image 1.** S1 Antibody (N-Term) (ABIN651199 and ABIN2840127) flow cytometric analysis of MDA-M cells (right histogram) compared to a negative control cell (left histogram). FITC-conjugated goat-anti-rabbit secondary antibodies were used for the analysis.

### Western Blotting

**Image 2.** Western blot analysis of S1 Antibody (N-Term) (ABIN651199 and ABIN2840127) in MDA-M cell line lysates (35 µg/lane). S1 (arrow) was detected using the purified Pab.

### Immunohistochemistry (Paraffin-embedded Sections)

**Image 3.** S1 Antibody (N-Term) (ABIN651199 and ABIN2840127) immunohistochemistry analysis in formalin fixed and paraffin embedded human skeletal muscle followed by peroxidase conjugation of the secondary antibody and DAB staining. This data demonstrates the use of the S1 Antibody (N-Term) for immunohistochemistry. Clinical relevance has not been evaluated.