

Datasheet for ABIN651201
anti-B3GALT6 antibody (C-Term)

3 Images

[Go to Product page](#)

Overview

Quantity:	400 µL
Target:	B3GALT6
Binding Specificity:	AA 241-269, C-Term
Reactivity:	Human
Host:	Rabbit
Clonality:	Polyclonal
Conjugate:	This B3GALT6 antibody is un-conjugated
Application:	Western Blotting (WB), Flow Cytometry (FACS), Immunohistochemistry (Paraffin-embedded Sections) (IHC (p))

Product Details

Immunogen:	This B3GALT6 antibody is generated from rabbits immunized with a KLH conjugated synthetic peptide between 241-269 amino acids from the C-terminal region of human B3GALT6.
Clone:	RB23047
Isotype:	Ig Fraction
Purification:	This antibody is purified through a protein A column, followed by peptide affinity purification.

Target Details

Target:	B3GALT6
Alternative Name:	B3GALT6 (B3GALT6 Products)

Target Details

Background: B3GALT6, Beta-1,3-galactosyltransferase that transfers galactose from UDP-galactose to substrates with a terminal beta-linked galactose residue. B3GALT6 has a preference for galactose-beta-1,4-xylose that is found in the linker region of glycosaminoglycans, such as heparan sulfate and chondroitin sulfate. B3GALT6 has no activity towards substrates with terminal glucosamine or galactosamine residues.

Molecular Weight: 37138

Gene ID: 126792

NCBI Accession: [NP_542172](#)

UniProt: [Q96L58](#)

Pathways: [Glycosaminoglycan Metabolic Process](#)

Application Details

Application Notes: WB: 1:1000. IHC-P: 1:50~100. FC: 1:10~50

Restrictions: For Research Use only

Handling

Format: Liquid

Buffer: Purified polyclonal antibody supplied in PBS with 0.09 % (W/V) sodium azide.

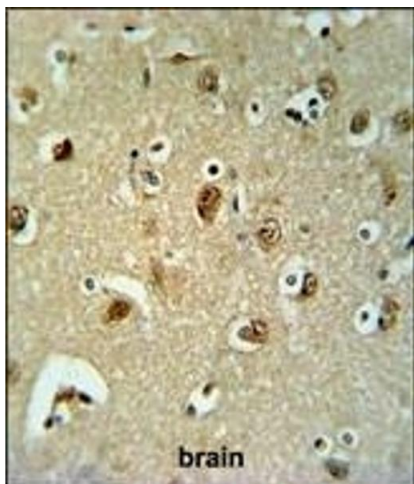
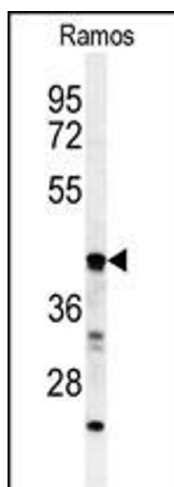
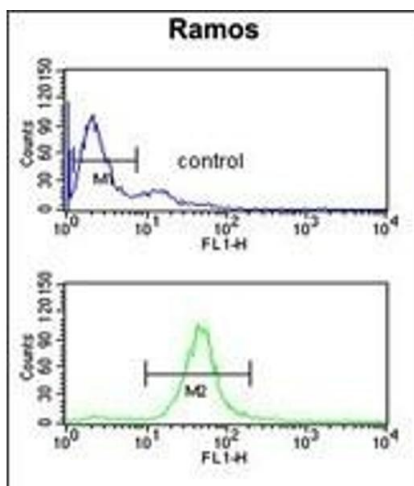
Preservative: Sodium azide

Precaution of Use: This product contains Sodium azide: a POISONOUS AND HAZARDOUS SUBSTANCE which should be handled by trained staff only.

Storage: 4 °C, -20 °C

Storage Comment: Maintain refrigerated at 2-8 °C for up to 6 months. For long term storage store at -20 °C in small aliquots to prevent freeze-thaw cycles.

Expiry Date: 6 months



Flow Cytometry

Image 1. B3GALT6 Antibody (C-term) (ABIN651201 and ABIN2840128) flow cytometric analysis of Ramos cells (bottom histogram) compared to a negative control cell (top histogram). FITC-conjugated goat-anti-rabbit secondary antibodies were used for the analysis.

Western Blotting

Image 2. Western blot analysis of B3GALT6 Antibody (C-term) (ABIN651201 and ABIN2840128) in Ramos cell line lysates (35 μ g/lane). B3GALT6 (arrow) was detected using the purified Pab.

Immunohistochemistry (Paraffin-embedded Sections)

Image 3. B3GALT6 Antibody (C-term) (ABIN651201 and ABIN2840128) in Ramos cell line lysates (35 μ g/lane). B3GALT6 (arrow) IHC analysis in formalin fixed and paraffin embedded brain tissue followed by peroxidase conjugation of the secondary antibody and DAB staining. This data demonstrates the use of the B3GALT6 Antibody (C-term) for immunohistochemistry. Clinical relevance has not been evaluated.