



[Go to Product page](#)

Datasheet for ABIN651202

anti-BTNL8 antibody (AA 257-285)

2 Images

Overview

Quantity:	400 µL
Target:	BTNL8
Binding Specificity:	AA 257-285
Reactivity:	Human
Host:	Rabbit
Clonality:	Polyclonal
Conjugate:	This BTNL8 antibody is un-conjugated
Application:	Western Blotting (WB), Flow Cytometry (FACS)

Product Details

Immunogen:	This BTNL8 antibody is generated from rabbits immunized with a KLH conjugated synthetic peptide between 257-285 amino acids from the Central region of human BTNL8.
Clone:	RB22290
Isotype:	Ig Fraction
Purification:	This antibody is purified through a protein A column, followed by peptide affinity purification.

Target Details

Target:	BTNL8
Alternative Name:	BTNL8 (BTNL8 Products)
Molecular Weight:	56748

Target Details

Gene ID:	79908
NCBI Accession:	NP_001035552 , NP_001153179 , NP_001153180 , NP_001153181 , NP_001153182 , NP_079126
UniProt:	Q6UX41

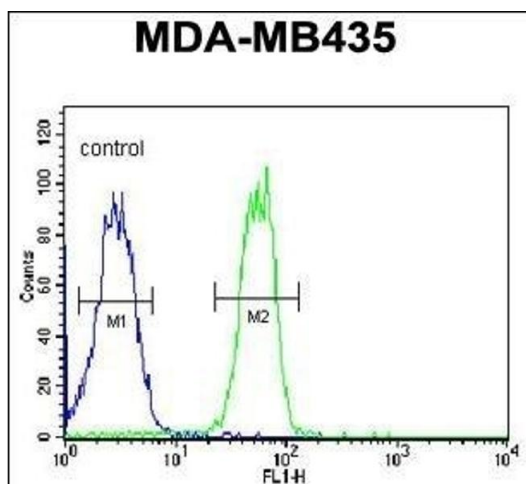
Application Details

Application Notes:	WB: 1:1000. FC: 1:10~50
Restrictions:	For Research Use only

Handling

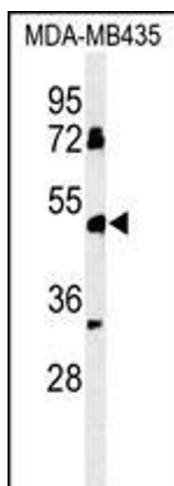
Format:	Liquid
Buffer:	Purified polyclonal antibody supplied in PBS with 0.09 % (W/V) sodium azide.
Preservative:	Sodium azide
Precaution of Use:	This product contains Sodium azide: a POISONOUS AND HAZARDOUS SUBSTANCE which should be handled by trained staff only.
Storage:	4 °C,-20 °C
Storage Comment:	Maintain refrigerated at 2-8 °C for up to 6 months. For long term storage store at -20 °C in small aliquots to prevent freeze-thaw cycles.
Expiry Date:	6 months

Validation report #101148 for Western Blotting (WB)



Flow Cytometry

Image 1. BTNL8 Antibody (Center) (ABIN651202 and ABIN2840129) flow cytometric analysis of MDA-M cells (right histogram) compared to a negative control cell (left histogram). FITC-conjugated goat-anti-rabbit secondary antibodies were used for the analysis.



Western Blotting

Image 2. Western blot analysis of BTNL8 Antibody (Center) (ABIN651202 and ABIN2840129) in MDA-M cell line lysates (35 µg/lane).BTNL8 (arrow) was detected using the purified Pab.