

Datasheet for ABIN651210
anti-CD80 antibody (C-Term)

2 Images

[Go to Product page](#)

Overview

| | |
|----------------------|-------------------------------------|
| Quantity: | 400 µL |
| Target: | CD80 |
| Binding Specificity: | AA 260-288, C-Term |
| Reactivity: | Human |
| Host: | Rabbit |
| Clonality: | Polyclonal |
| Conjugate: | This CD80 antibody is un-conjugated |
| Application: | Western Blotting (WB) |

Product Details

| | |
|---------------|--|
| Immunogen: | This CD80 antibody is generated from rabbits immunized with a KLH conjugated synthetic peptide between 260-288 amino acids from the C-terminal region of human CD80. |
| Clone: | RB22396 |
| Isotype: | Ig Fraction |
| Purification: | This antibody is purified through a protein A column, followed by peptide affinity purification. |

Target Details

| | |
|-------------------|--|
| Target: | CD80 |
| Alternative Name: | CD80 (CD80 Products) |
| Background: | CD80 is activation antigen B7-1 (formerly referred to as B7) provides regulatory signals for T |

Target Details

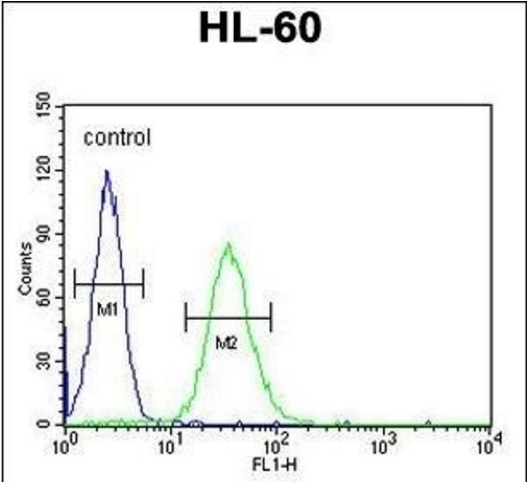
| | |
|-------------------|--|
| | lymphocytes as a consequence of binding to the CD28 (MIM 186760) and CTLA4 (MIM 123890) ligands of T cells. |
| Molecular Weight: | 33048 |
| Gene ID: | 941 |
| NCBI Accession: | NP_005182 |
| UniProt: | P33681 |
| Pathways: | TCR Signaling , Fc-epsilon Receptor Signaling Pathway , EGFR Signaling Pathway , Neurotrophin Signaling Pathway , Positive Regulation of Immune Effector Process , Cancer Immune Checkpoints |

Application Details

| | |
|--------------------|-----------------------|
| Application Notes: | WB: 1:500-1000 |
| Restrictions: | For Research Use only |

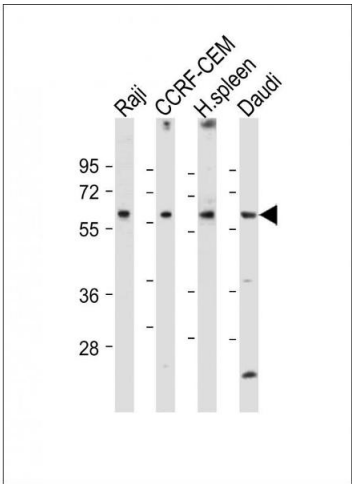
Handling

| | |
|--------------------|--|
| Format: | Liquid |
| Buffer: | Purified polyclonal antibody supplied in PBS with 0.09 % (W/V) sodium azide. |
| Preservative: | Sodium azide |
| Precaution of Use: | This product contains Sodium azide: a POISONOUS AND HAZARDOUS SUBSTANCE which should be handled by trained staff only. |
| Storage: | 4 °C,-20 °C |
| Storage Comment: | Maintain refrigerated at 2-8 °C for up to 6 months. For long term storage store at -20 °C in small aliquots to prevent freeze-thaw cycles. |
| Expiry Date: | 6 months |



Flow Cytometry

Image 1. CD80 Antibody (C-term) (ABIN651210 and ABIN2840132) flow cytometric analysis of HL-60 cells (right histogram) compared to a negative control cell (left histogram). FITC-conjugated goat-anti-rabbit secondary antibodies were used for the analysis.



Western Blotting

Image 2. All lanes : Anti-CD80 Antibody (C-term) at 1:500-1000 dilution Lane 1: Raji whole cell lysate Lane 2: CCRF-CEM whole cell lysate Lane 3: Human spleen tissue lysate Lane 4: Daudi whole cell lysate Lysates/proteins at 20 µg per lane. Secondary Goat Anti-Rabbit IgG, (H+L), Peroxidase conjugated at 1/10000 dilution. Predicted band size : 33 kDa Blocking/Dilution buffer: 5 % NFDM/TBST.