

Datasheet for ABIN651213  
**anti-CMTM7 antibody (N-Term)**

## 3 Images

[Go to Product page](#)

## Overview

Quantity:	400 µL
Target:	CMTM7
Binding Specificity:	AA 13-42, N-Term
Reactivity:	Human
Host:	Rabbit
Clonality:	Polyclonal
Conjugate:	This CMTM7 antibody is un-conjugated
Application:	Western Blotting (WB), Flow Cytometry (FACS)

## Product Details

Immunogen:	This CMTM7 antibody is generated from rabbits immunized with a KLH conjugated synthetic peptide between 13-42 amino acids from the N-terminal region of human CMTM7.
Clone:	RB26134
Isotype:	Ig Fraction
Purification:	This antibody is purified through a protein A column, followed by peptide affinity purification.

## Target Details

Target:	CMTM7
Alternative Name:	CMTM7 ( <a href="#">CMTM7 Products</a> )
Background:	CMTM7 belongs to the chemokine-like factor gene superfamily, a novel family that is similar to

## Target Details

the chemokine and transmembrane 4 superfamilies. This gene is one of several chemokine-like factor genes located in a cluster on chromosome 3. The protein encoded by this gene is highly expressed in leukocytes, but its exact function is unknown.

Molecular Weight: 18834

Gene ID: 112616

NCBI Accession: [NP\\_612419](#), [NP\\_852137](#)

UniProt: [Q96FZ5](#)

## Application Details

Application Notes: WB: 1:1000. WB: 1:1000. FC: 1:10~50

Restrictions: For Research Use only

## Handling

Format: Liquid

Buffer: Purified polyclonal antibody supplied in PBS with 0.09 % (W/V) sodium azide.

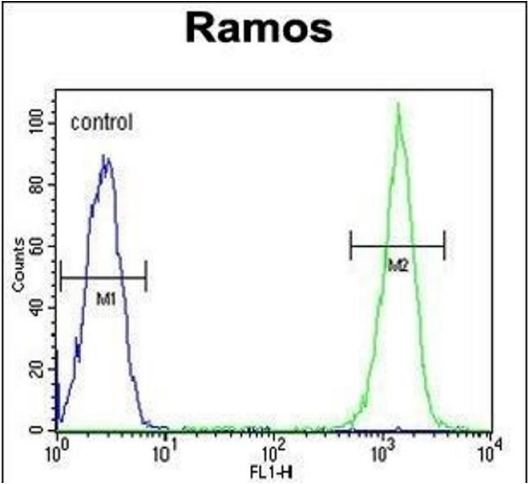
Preservative: Sodium azide

Precaution of Use: This product contains Sodium azide: a POISONOUS AND HAZARDOUS SUBSTANCE which should be handled by trained staff only.

Storage: 4 °C, -20 °C

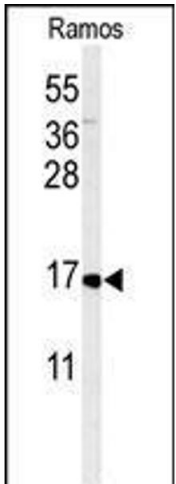
Storage Comment: Maintain refrigerated at 2-8 °C for up to 6 months. For long term storage store at -20 °C in small aliquots to prevent freeze-thaw cycles.

Expiry Date: 6 months



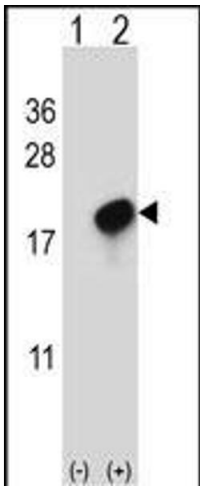
### Flow Cytometry

**Image 1.** CMTM7 Antibody (N-term) (ABIN651213 and ABIN2840134) flow cytometric analysis of Ramos cells (right histogram) compared to a negative control cell (left histogram). FITC-conjugated goat-anti-rabbit secondary antibodies were used for the analysis.



### Western Blotting

**Image 2.** Western blot analysis of CMTM7 Antibody (N-term) (ABIN651213 and ABIN2840134) in Ramos cell line lysates (35  $\mu$ g/lane). CMTM7 (arrow) was detected using the purified Pab.



### Western Blotting

**Image 3.** Western blot analysis of CMTM7 (arrow) using rabbit polyclonal CMTM7 Antibody (N-term) (ABIN651213 and ABIN2840134). 293 cell lysates (2  $\mu$ g/lane) either nontransfected (Lane 1) or transiently transfected (Lane 2) with the CMTM7 gene.