



[Go to Product page](#)

Datasheet for ABIN651216

## anti-EXOC3L2 antibody (N-Term)

### 3 Images

#### Overview

Quantity:	400 µL
Target:	EXOC3L2
Binding Specificity:	AA 54-83, N-Term
Reactivity:	Human
Host:	Rabbit
Clonality:	Polyclonal
Conjugate:	This EXOC3L2 antibody is un-conjugated
Application:	Western Blotting (WB), Flow Cytometry (FACS), Immunohistochemistry (Paraffin-embedded Sections) (IHC (p))

#### Product Details

Immunogen:	This EXOC3L2 antibody is generated from rabbits immunized with a KLH conjugated synthetic peptide between 54-83 amino acids from the N-terminal region of human EXOC3L2.
Clone:	RB26004
Isotype:	Ig Fraction
Purification:	This antibody is purified through a protein A column, followed by peptide affinity purification.

#### Target Details

Target:	EXOC3L2
Alternative Name:	EXOC3L2 ( <a href="#">EXOC3L2 Products</a> )

## Target Details

Molecular Weight:	45859
Gene ID:	90332
NCBI Accession:	<a href="#">NP_612635</a>
UniProt:	<a href="#">Q2M3D2</a>

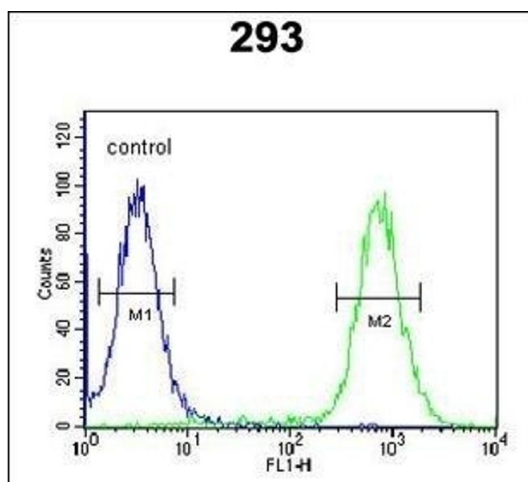
## Application Details

Application Notes:	WB: 1:1000. IHC-P: 1:50~100. FC: 1:10~50
Restrictions:	For Research Use only

## Handling

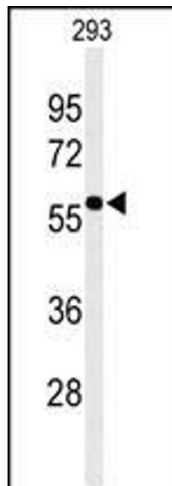
Format:	Liquid
Buffer:	Purified polyclonal antibody supplied in PBS with 0.09 % (W/V) sodium azide.
Preservative:	Sodium azide
Precaution of Use:	This product contains Sodium azide: a POISONOUS AND HAZARDOUS SUBSTANCE which should be handled by trained staff only.
Storage:	4 °C,-20 °C
Storage Comment:	Maintain refrigerated at 2-8 °C for up to 6 months. For long term storage store at -20 °C in small aliquots to prevent freeze-thaw cycles.
Expiry Date:	6 months

## Images



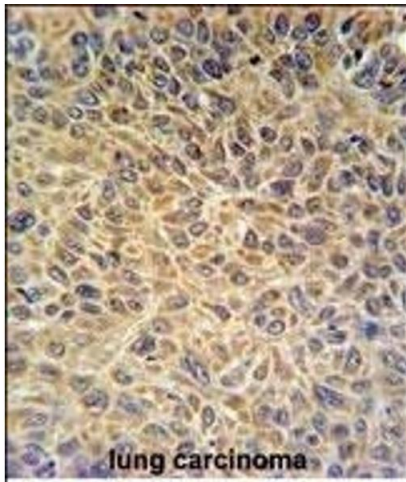
### Flow Cytometry

**Image 1.** EXOC3L2 Antibody (N-term) (ABIN651216 and ABIN2840135) flow cytometric analysis of 293 cells (right histogram) compared to a negative control cell (left histogram). FITC-conjugated goat-anti-rabbit secondary antibodies were used for the analysis.



### Western Blotting

**Image 2.** Western blot analysis of EXOC3L2 Antibody (N-term) (ABIN651216 and ABIN2840135) in 293 cell line lysates (35 µg/lane). EXOC3L2 (arrow) was detected using the purified Pab.



### Immunohistochemistry (Paraffin-embedded Sections)

**Image 3.** EXOC3L2 Antibody (N-term) (ABIN651216 and ABIN2840135) IHC analysis in formalin fixed and paraffin embedded human lung carcinoma followed by peroxidase conjugation of the secondary antibody and DAB staining. This data demonstrates the use of the EXOC3L2 Antibody (N-term) for immunohistochemistry. Clinical relevance has not been evaluated.