

Datasheet for ABIN651222

anti-FOLR2 antibody (AA 18-46)

7 Images

1 Publication

[Go to Product page](#)

Overview

Quantity:	400 µL
Target:	FOLR2
Binding Specificity:	AA 18-46
Reactivity:	Human, Mouse
Host:	Rabbit
Clonality:	Polyclonal
Conjugate:	This FOLR2 antibody is un-conjugated
Application:	Western Blotting (WB), Flow Cytometry (FACS), Immunohistochemistry (Paraffin-embedded Sections) (IHC (p))

Product Details

Immunogen:	This FOLR2 antibody is generated from rabbits immunized with a KLH conjugated synthetic peptide between 18-46 amino acids of human FOLR2.
Clone:	RB24013
Isotype:	IgG
Purification:	This antibody is purified through a protein A column, followed by peptide affinity purification.

Target Details

Target:	FOLR2
Alternative Name:	FOLR2 (FOLR2 Products)

Target Details

Background:	FOLR2 is a member of the folate receptor (FOLR) family, and these genes exist in a cluster on chromosome 11. Members of this gene family have a high affinity for folic acid and for several reduced folic acid derivatives, and they mediate delivery of 5-methyltetrahydrofolate to the interior of cells. This protein has a 68 % and 79 % sequence homology with the FOLR1 and FOLR3 proteins, respectively. Although this protein was originally thought to be specific to placenta, it can also exist in other tissues, and it may play a role in the transport of methotrexate in synovial macrophages in rheumatoid arthritis patients.
Molecular Weight:	29280
Gene ID:	2350
NCBI Accession:	NP_000794 , NP_001107006 , NP_001107007 , NP_001107008
UniProt:	P14207
Pathways:	Dicarboxylic Acid Transport

Application Details

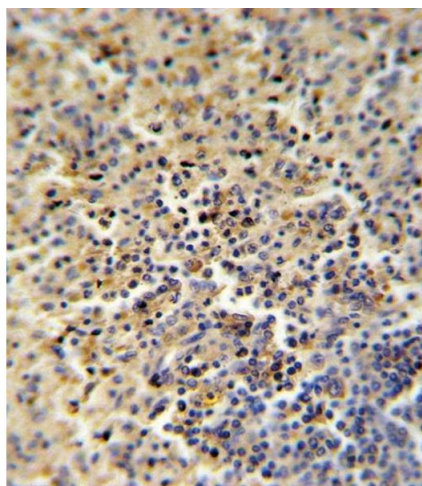
Application Notes:	WB: 1:1000. WB: 1:1000. WB: 1:1000. WB: 1:1000. WB: 1:1000. WB: 1:1000. IHC-P: 1:10~50
Restrictions:	For Research Use only

Handling

Format:	Liquid
Buffer:	Purified polyclonal antibody supplied in PBS with 0.09 % (W/V) sodium azide.
Preservative:	Sodium azide
Precaution of Use:	This product contains Sodium azide: a POISONOUS AND HAZARDOUS SUBSTANCE which should be handled by trained staff only.
Handling Advice:	Avoid freeze-thaw cycles.
Storage:	4 °C, -20 °C
Storage Comment:	Maintain refrigerated at 2-8 °C for up to 6 months. For long term storage store at -20 °C in small aliquots.
Expiry Date:	6 months

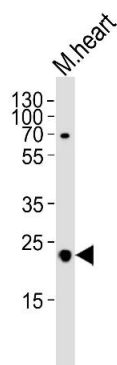
Product cited in: Huang, Zhan, Cao, Li, Lyu, Guo, Zhang, Ji, Ren, An, Liu, Nie, Xing: "Increased mitochondrial fission promotes autophagy and hepatocellular carcinoma cell survival through the ROS-modulated coordinated regulation of the NFkB and TP53 pathways." in: **Autophagy**, Vol. 12, Issue 6, pp. 999-1014, (2017) ([PubMed](#)).

Images



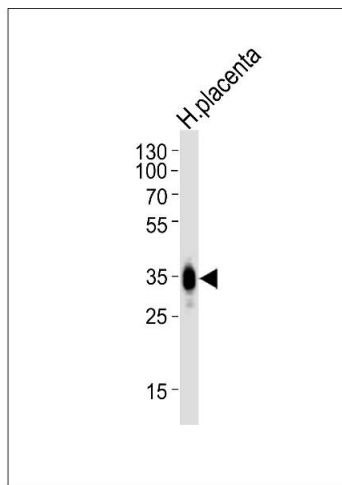
Immunohistochemistry (Paraffin-embedded Sections)

Image 1. FOLR2 Antibody (N-term) (ABIN651222 and ABIN2840139) IHC analysis in formalin fixed and paraffin embedded human spleen followed by peroxidase conjugation of the secondary antibody and DAB staining. This data demonstrates the use of the FOLR2 Antibody (N-term) for immunohistochemistry. Clinical relevance has not been evaluated.



Western Blotting

Image 2. Western blot analysis of lysate from mouse heart tissue lysate, using FOLR2 Antibody (N-term) (ABIN651222 and ABIN2840139). (ABIN651222 and ABIN2840139) was diluted at 1:1000. A goat anti-rabbit IgG H&L(HRP) at 1:5000 dilution was used as the secondary antibody. Lysate at 35 μ g.



Western Blotting

Image 3. Western blot analysis of lysate from human placenta tissue, using FOLR2 Antibody (N-term) (ABIN651222 and ABIN2840139). (ABIN651222 and ABIN2840139) was diluted at 1:1000. A goat anti-rabbit IgG H&L(HRP) at 1:10000 dilution was used as the secondary antibody. Lysate at 20 µg.

Please check the [product details page](#) for more images. Overall 7 images are available for ABIN651222.