



[Go to Product page](#)

Datasheet for ABIN651237

anti-ISM1 antibody (AA 435-464)

3 Images

Overview

Quantity:	400 µL
Target:	ISM1
Binding Specificity:	AA 435-464
Reactivity:	Human
Host:	Rabbit
Clonality:	Polyclonal
Conjugate:	This ISM1 antibody is un-conjugated
Application:	Western Blotting (WB), Immunohistochemistry (Paraffin-embedded Sections) (IHC (p))

Product Details

Immunogen:	This ISM1 antibody is generated from rabbits immunized with a KLH conjugated synthetic peptide between 435-464 amino acids of human ISM1.
Clone:	RB25991
Isotype:	IgG
Purification:	This antibody is purified through a protein A column, followed by peptide affinity purification.

Target Details

Target:	ISM1
Alternative Name:	ISM1 (ISM1 Products)
Molecular Weight:	52107

Target Details

Gene ID: 140862

NCBI Accession: [NP_543016](#)

UniProt: [B1AKI9](#)

Application Details

Application Notes: WB: 1:2000. IHC-P: 1:50~100

Restrictions: For Research Use only

Handling

Format: Liquid

Buffer: Purified polyclonal antibody supplied in PBS with 0.09 % (W/V) sodium azide.

Preservative: Sodium azide

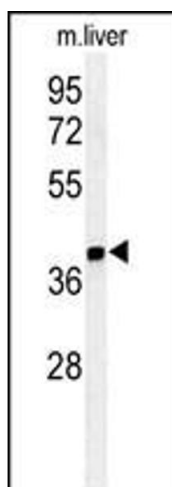
Precaution of Use: This product contains Sodium azide: a POISONOUS AND HAZARDOUS SUBSTANCE which should be handled by trained staff only.

Storage: 4 °C,-20 °C

Storage Comment: Maintain refrigerated at 2-8 °C for up to 6 months. For long term storage store at -20 °C in small aliquots to prevent freeze-thaw cycles.

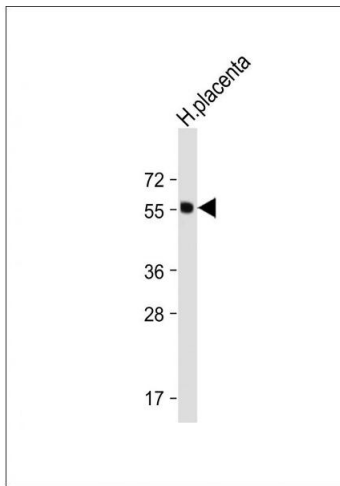
Expiry Date: 6 months

Images



Western Blotting

Image 1. Western blot analysis of ISM1 Antibody (C-term) (ABIN651237 and ABIN2840147) in mouse liver tissue lysates (35 µg/lane).ISM1 (arrow) was detected using the purified Pab.



Western Blotting

Image 2. Anti-ISM1 Antibody (C-term) at 1:2000 dilution + Human placenta tissue lysate Lysates/proteins at 20 µg per lane. Secondary Goat Anti-Rabbit IgG, (H+L), Peroxidase conjugated at 1/10000 dilution. Predicted band size : 52 kDa Blocking/Dilution buffer: 5 % NFDM/TBST.



Immunohistochemistry (Paraffin-embedded Sections)

Image 3. ISM1 Antibody (C-term) (ABIN651237 and ABIN2840147) immunohistochemistry analysis in formalin fixed and paraffin embedded human skin carcinoma followed by peroxidase conjugation of the secondary antibody and DAB staining. This data demonstrates the use of the ISM1 Antibody (C-term) for immunohistochemistry. Clinical relevance has not been evaluated.