



[Go to Product page](#)

Datasheet for ABIN651239  
**anti-KCTD7 antibody (AA 95-123)**

1 Image

### Overview

Quantity:	400 µL
Target:	KCTD7
Binding Specificity:	AA 95-123
Reactivity:	Human
Host:	Rabbit
Clonality:	Polyclonal
Conjugate:	This KCTD7 antibody is un-conjugated
Application:	Western Blotting (WB)

### Product Details

Immunogen:	This KCTD7 antibody is generated from rabbits immunized with a KLH conjugated synthetic peptide between 95-123 amino acids from the Central region of human KCTD7.
Clone:	RB26038
Isotype:	Ig Fraction
Predicted Reactivity:	B, C
Purification:	This antibody is purified through a protein A column, followed by peptide affinity purification.

### Target Details

Target:	KCTD7
Alternative Name:	KCTD7 ( <a href="#">KCTD7 Products</a> )

## Target Details

---

**Background:** The KCTD gene family, including KCTD7, encode predicted proteins that contain N-terminal domain that is homologous to the T1 domain in voltage-gated potassium channels (see KCNA1, MIM 176260). KCTD7 displays a primary sequence and hydropathy profile indicating intracytoplasmic localization. EST database analysis showed that KCTD7 is expressed in human and mouse brain

**Molecular Weight:** 33132

**Gene ID:** 154881

**NCBI Accession:** [NP\\_001161433](#), [NP\\_694578](#)

**UniProt:** [Q96MP8](#)

## Application Details

---

**Application Notes:** WB: 1:1000

**Restrictions:** For Research Use only

## Handling

---

**Format:** Liquid

**Buffer:** Purified polyclonal antibody supplied in PBS with 0.09 % (W/V) sodium azide.

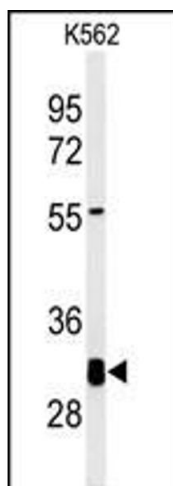
**Preservative:** Sodium azide

**Precaution of Use:** This product contains Sodium azide: a POISONOUS AND HAZARDOUS SUBSTANCE which should be handled by trained staff only.

**Storage:** 4 °C,-20 °C

**Storage Comment:** Maintain refrigerated at 2-8 °C for up to 6 months. For long term storage store at -20 °C in small aliquots to prevent freeze-thaw cycles.

**Expiry Date:** 6 months



### Western Blotting

**Image 1.** Western blot analysis of KCTD7 Antibody (Center) (ABIN651239 and ABIN2840148) in K562 cell line lysates (35 µg/lane). KCTD7 (arrow) was detected using the purified Pab.