

Datasheet for ABIN651241  
**anti-KRTAP1-1 antibody (AA 88-117)**[Go to Product page](#)

## 3 Images

## Overview

Quantity:	400 µL
Target:	KRTAP1-1
Binding Specificity:	AA 88-117
Reactivity:	Human
Host:	Rabbit
Clonality:	Polyclonal
Conjugate:	This KRTAP1-1 antibody is un-conjugated
Application:	Western Blotting (WB), Flow Cytometry (FACS), Immunohistochemistry (Paraffin-embedded Sections) (IHC (p))

## Product Details

Immunogen:	This KRTAP1-1 antibody is generated from rabbits immunized with a KLH conjugated synthetic peptide between 88-117 amino acids from the Central region of human KRTAP1-1.
Clone:	RB26012
Isotype:	Ig Fraction
Purification:	This antibody is purified through a protein A column, followed by peptide affinity purification.

## Target Details

Target:	KRTAP1-1
Alternative Name:	KRTAP1-1 ( <a href="#">KRTAP1-1 Products</a> )

## Target Details

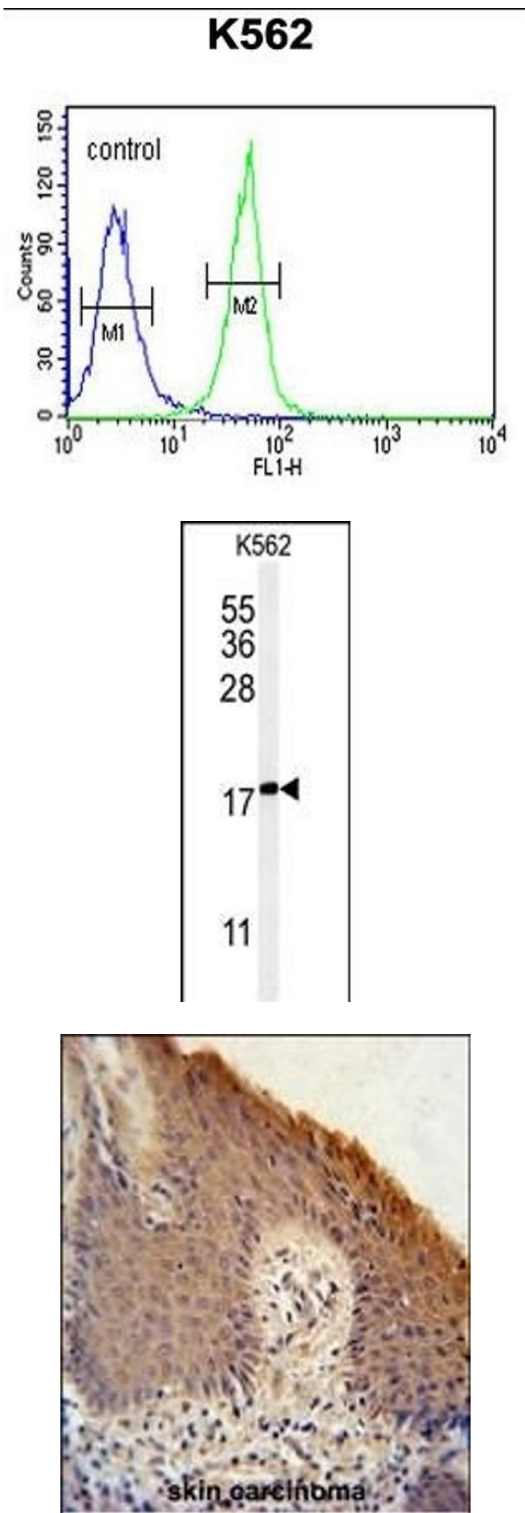
Background:	KRTAP1-1 is a member of the keratin-associated protein (KAP) family. The KAP proteins form a matrix of keratin intermediate filaments which contribute to the structure of hair fibers. KAP family members appear to have unique, family-specific amino- and carboxyl-terminal regions and are subdivided into three multi-gene families according to amino acid composition: the high sulfur, the ultrahigh sulfur, and the high tyrosine/glycine KAPs. This protein is a member of the high sulfur KAP family and the gene is localized to a cluster of KAPs at 17q12-q21.
Molecular Weight:	18235
Gene ID:	81851
NCBI Accession:	<a href="#">NP_112229</a>
UniProt:	<a href="#">Q07627</a>

## Application Details

Application Notes:	WB: 1:1000. IHC-P: 1:50~100. FC: 1:10~50
Restrictions:	For Research Use only

## Handling

Format:	Liquid
Buffer:	Purified polyclonal antibody supplied in PBS with 0.09 % (W/V) sodium azide.
Preservative:	Sodium azide
Precaution of Use:	This product contains Sodium azide: a POISONOUS AND HAZARDOUS SUBSTANCE which should be handled by trained staff only.
Storage:	4 °C, -20 °C
Storage Comment:	Maintain refrigerated at 2-8 °C for up to 6 months. For long term storage store at -20 °C in small aliquots to prevent freeze-thaw cycles.
Expiry Date:	6 months



### Flow Cytometry

**Image 1.** KRT1 Antibody (Center) (ABIN651241 and ABIN2840150) flow cytometric analysis of K562 cells (right histogram) compared to a negative control cell (left histogram). FITC-conjugated goat-anti-rabbit secondary antibodies were used for the analysis.

### Western Blotting

**Image 2.** Western blot analysis of KRT1 Antibody (Center) (ABIN651241 and ABIN2840150) in K562 cell line lysates (35 µg/lane). KRT1 (arrow) was detected using the purified Pab.

### Immunohistochemistry (Paraffin-embedded Sections)

**Image 3.** KRT1 Antibody (Center) (ABIN651241 and ABIN2840150) immunohistochemistry analysis in formalin fixed and paraffin embedded human skin carcinoma followed by peroxidase conjugation of the secondary antibody and DAB staining. This data demonstrates the use of the KRT1 Antibody (Center) for immunohistochemistry. Clinical relevance has not been evaluated.