

Datasheet for ABIN651247  
**anti-MAGT1 antibody (N-Term)**[Go to Product page](#)

## 2 Images

## Overview

Quantity:	400 µL
Target:	MAGT1
Binding Specificity:	AA 44-71, N-Term
Reactivity:	Human, Mouse
Host:	Rabbit
Clonality:	Polyclonal
Conjugate:	This MAGT1 antibody is un-conjugated
Application:	Western Blotting (WB), Flow Cytometry (FACS)

## Product Details

Immunogen:	This MAGT1 antibody is generated from rabbits immunized with a KLH conjugated synthetic peptide between 44-71 amino acids from the N-terminal region of human MAGT1.
Clone:	RB25786
Isotype:	IgG
Predicted Reactivity:	C
Purification:	This antibody is purified through a protein A column, followed by peptide affinity purification.

## Target Details

Target:	MAGT1
Alternative Name:	MAGT1 ( <a href="#">MAGT1 Products</a> )

## Target Details

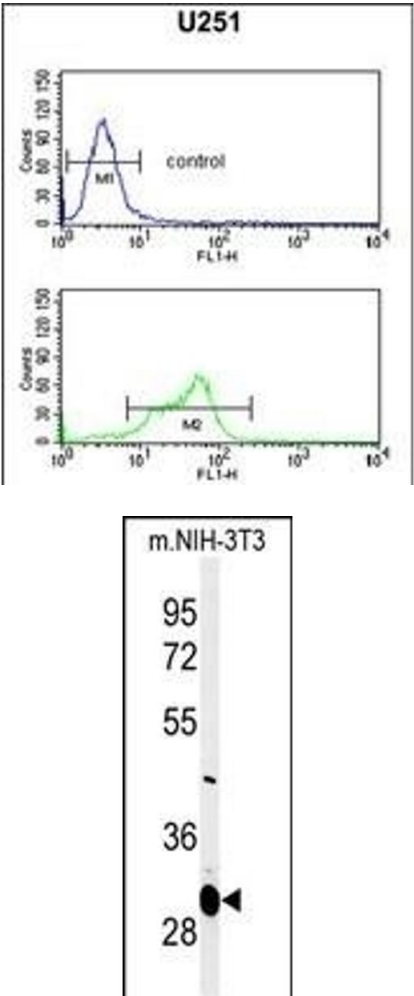
Background:	<p>MAGT1 encodes a magnesium cation transporter protein that localizes to the cell membrane.</p> <p>This protein also associates with N-oligosaccharyl transferase and therefore may have a role in N-glycosylation. Mutations in this gene cause mental retardation X-linked type 95 (MRX95).</p> <p>This gene may have multiple in-frame translation initiation sites, one of which would encode a shorter protein with an N-terminus containing a signal peptide at amino acids 1-29.</p>
Molecular Weight:	38037
Gene ID:	84061
NCBI Accession:	<a href="#">NP_115497</a>
UniProt:	<a href="#">Q9H0U3</a>
Pathways:	<a href="#">Cell RedoxHomeostasis</a>

## Application Details

Application Notes:	WB: 1:1000. FC: 1:10~50
Restrictions:	For Research Use only

## Handling

Format:	Liquid
Buffer:	Purified polyclonal antibody supplied in PBS with 0.09 % (W/V) sodium azide.
Preservative:	Sodium azide
Precaution of Use:	This product contains Sodium azide: a POISONOUS AND HAZARDOUS SUBSTANCE which should be handled by trained staff only.
Storage:	4 °C,-20 °C
Storage Comment:	Maintain refrigerated at 2-8 °C for up to 6 months. For long term storage store at -20 °C in small aliquots to prevent freeze-thaw cycles.
Expiry Date:	6 months



### Flow Cytometry

**Image 1.** GT1 Antibody (N-term) (ABIN651247 and ABIN2840152) flow cytometric analysis of cells (bottom histogram) compared to a negative control (top histogram). FITC-conjugated goat-anti-rabbit secondary antibodies were used for the analysis.

### Western Blotting

**Image 2.** Western blot analysis of GT1 Antibody (N-term) (ABIN651247 and ABIN2840152) in mouse NIH-3T3 cell line lysates (35 µg/lane). GT1 (arrow) was detected using the purified Pab.