



[Go to Product page](#)

Datasheet for ABIN651259  
**anti-FOLH1B antibody (AA 155-183)**

5 Images

### Overview

Quantity:	400 µL
Target:	FOLH1B
Binding Specificity:	AA 155-183
Reactivity:	Human
Host:	Rabbit
Clonality:	Polyclonal
Conjugate:	This FOLH1B antibody is un-conjugated
Application:	Western Blotting (WB), Flow Cytometry (FACS), Immunohistochemistry (Paraffin-embedded Sections) (IHC (p))

### Product Details

Immunogen:	This PSMAL antibody is generated from rabbits immunized with a KLH conjugated synthetic peptide between 155-183 amino acids from the Central region of human PSMAL.
Clone:	RB20848
Isotype:	Ig Fraction
Purification:	This antibody is purified through a protein A column, followed by peptide affinity purification.

### Target Details

Target:	FOLH1B
Alternative Name:	PSMAL ( <a href="#">FOLH1B Products</a> )

## Target Details

---

Background:	PSMAL has both folate hydrolase and N-acetylated-alpha-linked-acidic dipeptidase (NAALADase) activity (By similarity). PSMAL exhibits a dipeptidyl-peptidase IV type activity
Molecular Weight:	50045
Gene ID:	219595
NCBI Accession:	<a href="#">NP_710163</a>
UniProt:	<a href="#">Q9HBA9</a>

## Application Details

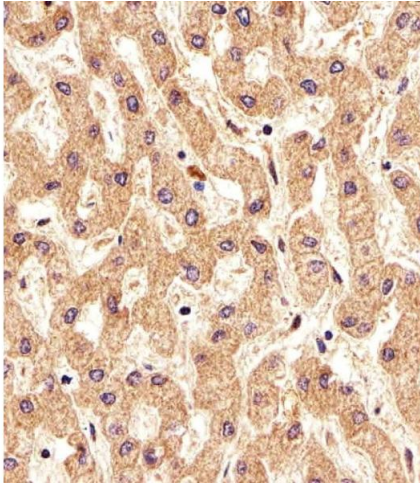
---

Application Notes:	WB: 1:1000. WB: 1:1000. IHC-P: 1:25. IHC-P: 1:50~100. FC: 1:10~50
Restrictions:	For Research Use only

## Handling

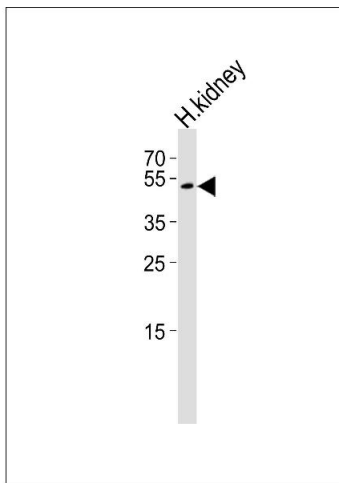
---

Format:	Liquid
Buffer:	Purified polyclonal antibody supplied in PBS with 0.09 % (W/V) sodium azide.
Preservative:	Sodium azide
Precaution of Use:	This product contains Sodium azide: a POISONOUS AND HAZARDOUS SUBSTANCE which should be handled by trained staff only.
Storage:	4 °C,-20 °C
Storage Comment:	Maintain refrigerated at 2-8 °C for up to 6 months. For long term storage store at -20 °C in small aliquots to prevent freeze-thaw cycles.
Expiry Date:	6 months



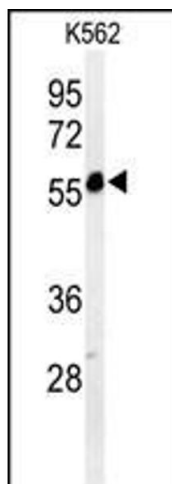
### Immunohistochemistry (Paraffin-embedded Sections)

**Image 1.** Immunohistochemical analysis of paraffin-embedded H. liver section using PSL Antibody (Center) (ABIN651259 and ABIN2840158). (ABIN651259 and ABIN2840158) was diluted at 1:25 dilution. A undiluted biotinylated goat polyvalent antibody was used as the secondary, followed by DAB staining.



### Western Blotting

**Image 2.** Western blot analysis of lysate from human kidney tissue lysate, using PSL Antibody (Center) (ABIN651259 and ABIN2840158). (ABIN651259 and ABIN2840158) was diluted at 1:1000. A goat anti-rabbit IgG H&L(HRP) at 1:10000 dilution was used as the secondary antibody. Lysate at 35 µg.



### Western Blotting

**Image 3.** Western blot analysis of PSL Antibody (Center) (ABIN651259 and ABIN2840158) in K562 cell line lysates (35 µg/lane). PSL (arrow) was detected using the purified Pab.

Please check the [product details page](#) for more images. Overall 5 images are available for ABIN651259.