

Datasheet for ABIN651265

anti-S100B antibody

7 Images

[Go to Product page](#)

Overview

Quantity:	400 µL
Target:	S100B
Reactivity:	Human, Rat, Mouse
Host:	Rabbit
Clonality:	Polyclonal
Conjugate:	This S100B antibody is un-conjugated
Application:	Western Blotting (WB), Flow Cytometry (FACS), Immunohistochemistry (Paraffin-embedded Sections) (IHC (p))

Product Details

Immunogen:	This S100B antibody is generated from rabbits immunized with S100B recombinant protein.
Clone:	RB22934
Isotype:	IgG
Predicted Reactivity:	Rb
Purification:	This antibody is purified through a protein A column, followed by peptide affinity purification.

Target Details

Target:	S100B
Alternative Name:	S100B (S100B Products)
Background:	S100B is a member of the S100 family of proteins containing 2 EF-hand calcium-binding

Target Details

motifs. S100 proteins are localized in the cytoplasm and/or nucleus of a wide range of cells, and involved in the regulation of a number of cellular processes such as cell cycle progression and differentiation. S100 genes include at least 13 members which are located as a cluster on chromosome 1q21, however, this gene is located at 21q22.3. This protein may function in Neurite extension, proliferation of melanoma cells, stimulation of Ca²⁺ fluxes, inhibition of PKC-mediated phosphorylation, astrocytosis and axonal proliferation, and inhibition of microtubule assembly. Chromosomal rearrangements and altered expression of this gene have been implicated in several neurological, neoplastic, and other types of diseases, including Alzheimer's disease, Down's syndrome, epilepsy, amyotrophic lateral sclerosis, melanoma, and type I diabetes.

Molecular Weight: 10713

Gene ID: 6285

NCBI Accession: [NP_006263](#)

UniProt: [P04271](#)

Pathways: [Regulation of Muscle Cell Differentiation](#), [Positive Regulation of Immune Effector Process](#), [Toll-Like Receptors Cascades](#), [Regulation of long-term Neuronal Synaptic Plasticity](#), [S100 Proteins](#)

Application Details

Application Notes: WB: 1:2000. WB: 1:1000. WB: 1:2000. IHC-P-Leica: 1:500. IHC-P-Leica: 1:500. FC: 1:10~50. IHC: 1:1000

Restrictions: For Research Use only

Handling

Format: Liquid

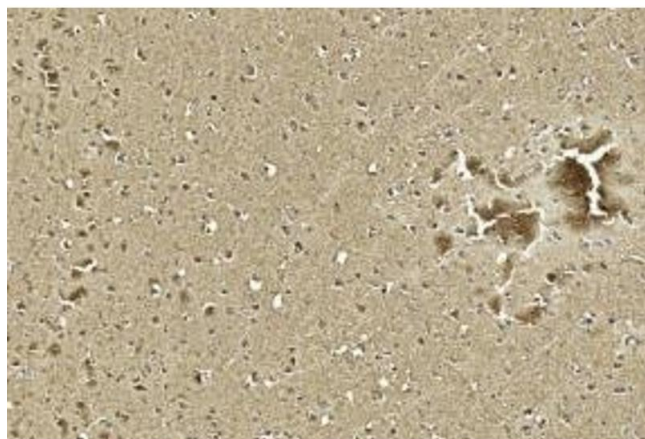
Buffer: Purified polyclonal antibody supplied in PBS with 0.09 % (W/V) sodium azide.

Preservative: Sodium azide

Precaution of Use: This product contains Sodium azide: a POISONOUS AND HAZARDOUS SUBSTANCE which should be handled by trained staff only.

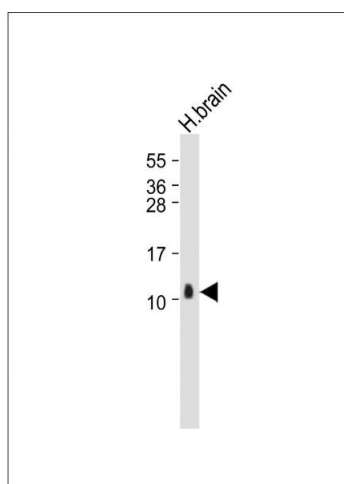
Storage: 4 °C, -20 °C

Storage Comment: Maintain refrigerated at 2-8 °C for up to 6 months. For long term storage store at -20 °C in small aliquots to prevent freeze-thaw cycles.



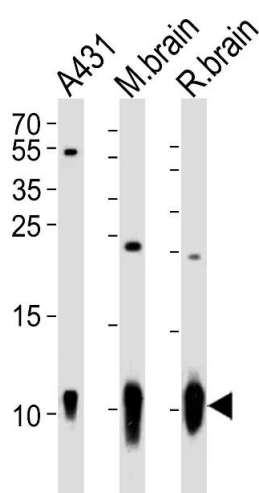
Immunohistochemistry

Image 1. Immunohistochemical analysis of paraffin-embedded Human brain section using Pink1 D. D was diluted at 1:1000 dilution. A undiluted biotinylated goat polyvalent antibody was used as the secondary, followed by DAB staining.



Western Blotting

Image 2. Anti-S100B Antibody at 1:2000 dilution + Human brain whole tissue lysate Lysates/proteins at 20 µg per lane. Secondary Goat Anti-Rabbit IgG, (H+L), Peroxidase conjugated at 1/10000 dilution. Predicted band size : 11 kDa Blocking/Dilution buffer: 5 % NFDM/TBST.



Western Blotting

Image 3. Western blot analysis of lysates from A431 cell line, mouse brain, rat brain tissue (from left to right), using S100B Antibody (ABIN651265 and ABIN2840160). (ABIN651265 and ABIN2840160) was diluted at 1:1000 at each lane. A goat anti-rabbit IgG H&L(HRP) at 1:10000 dilution was used as the secondary antibody. Lysates at 20 µg per lane.

Please check the [product details page](#) for more images. Overall 7 images are available for ABIN651265.