



[Go to Product page](#)

Datasheet for ABIN651280  
**anti-XRCC6 antibody (C-Term)**

6 Images

Overview

|                      |   |
|----------------------|---|
| Quantity:            | 400 µL  |
| Target:              | XRCC6   |
| Binding Specificity: | AA 521-548, C-Term  |
| Reactivity:          | Human   |
| Host:                | Rabbit  |
| Clonality:           | Polyclonal  |
| Conjugate:           | This XRCC6 antibody is un-conjugated  |
| Application:         | Western Blotting (WB), Immunofluorescence (IF), Flow Cytometry (FACS),<br>Immunohistochemistry (Paraffin-embedded Sections) (IHC (p)) |

Product Details

|               |  |
|---------------|--|
| Immunogen:    | This XRCC6 antibody is generated from rabbits immunized with a KLH conjugated synthetic peptide between 521-548 amino acids from the C-terminal region of human XRCC6. |
| Clone:        | RB20806  |
| Isotype:      | Ig Fraction  |
| Purification: | This antibody is purified through a protein A column, followed by peptide affinity purification.   |

Target Details

|                   |  |
|-------------------|--|
| Target:           | XRCC6                                    |
| Alternative Name: | XRCC6 ( <a href="#">XRCC6 Products</a> ) |

## Target Details

---

|                   |   |
|-------------------|---|
| Background:       | XRCC6 is a nuclear complex consisting of two subunits with molecular masses of approximately 70 and 80 kDa. The complex functions as a single-stranded DNA-dependent ATP-dependent helicase. The complex may be involved in the repair of nonhomologous DNA ends such as that required for double-strand break repair, transposition, and V(D)J recombination. High levels of autoantibodies to p70 and p80 have been found in some patients with systemic lupus erythematosus. |
| Molecular Weight: | 69843   |
| Gene ID:          | 2547  |
| NCBI Accession:   | <a href="#">NP_001460</a>   |
| UniProt:          | <a href="#">P12956</a>  |
| Pathways:         | <a href="#">DNA Damage Repair</a>   |

## Application Details

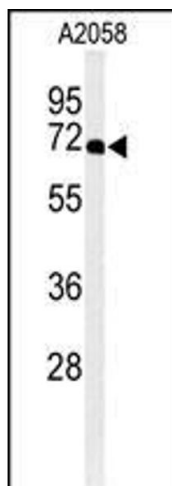
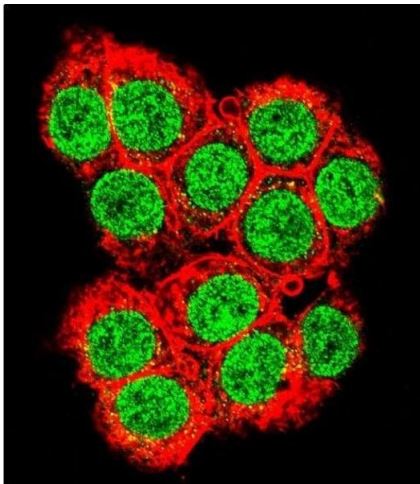
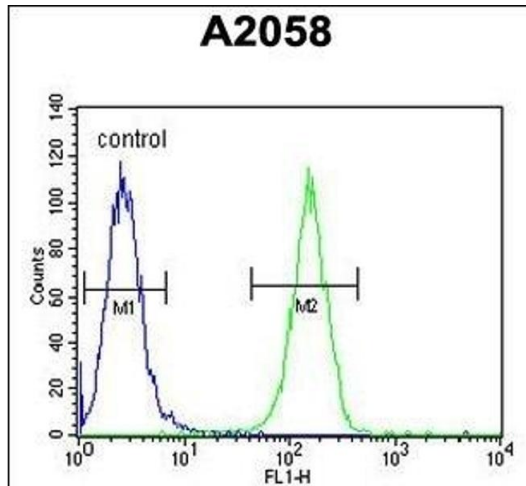
---

|                    |  |
|--------------------|--|
| Application Notes: | IF: 1:10~50. IF: 1:10~50. WB: 1:1000. WB: 1:1000. IHC-P: 1:50~100. FC: 1:10~50 |
| Restrictions:      | For Research Use only  |

## Handling

---

|                    |  |
|--------------------|--|
| Format:            | Liquid   |
| Buffer:            | Purified polyclonal antibody supplied in PBS with 0.09 % (W/V) sodium azide.   |
| Preservative:      | Sodium azide   |
| Precaution of Use: | This product contains Sodium azide: a POISONOUS AND HAZARDOUS SUBSTANCE which should be handled by trained staff only.                     |
| Storage:           | 4 °C,-20 °C  |
| Storage Comment:   | Maintain refrigerated at 2-8 °C for up to 6 months. For long term storage store at -20 °C in small aliquots to prevent freeze-thaw cycles. |
| Expiry Date:       | 6 months   |



### Flow Cytometry

**Image 1.** XRCC6 Antibody (C-term) (ABIN651280 and ABIN2840167) flow cytometric analysis of cells (right histogram) compared to a negative control cell (left histogram). FITC-conjugated goat-anti-rabbit secondary antibodies were used for the analysis.

### Immunofluorescence

**Image 2.** Confocal immunofluorescent analysis of XRCC6 Antibody (C-term) (ABIN651280 and ABIN2840167) with 293 cell followed by Alexa Fluor 488-conjugated goat anti-rabbit IgG (green). Actin filaments have been labeled with Alexa Fluor 555 phalloidin (red).

### Western Blotting

**Image 3.** Western blot analysis of XRCC6 Antibody (C-term) (ABIN651280 and ABIN2840167) in cell line lysates (35  $\mu$ g/lane). XRCC6 (arrow) was detected using the purified Pab.

Please check the [product details page](#) for more images. Overall 6 images are available for ABIN651280.