

Datasheet for ABIN651281
anti-XRCC6 antibody (AA 228-254)[Go to Product page](#)

4 Images

Overview

Quantity:	400 µL
Target:	XRCC6
Binding Specificity:	AA 228-254
Reactivity:	Human
Host:	Rabbit
Clonality:	Polyclonal
Conjugate:	This XRCC6 antibody is un-conjugated
Application:	Western Blotting (WB), Immunofluorescence (IF), Flow Cytometry (FACS), Immunohistochemistry (Paraffin-embedded Sections) (IHC (p))

Product Details

Immunogen:	This XRCC6 antibody is generated from rabbits immunized with a KLH conjugated synthetic peptide between 228-254 amino acids from the Central region of human XRCC6.
Clone:	RB22956
Isotype:	Ig Fraction
Purification:	This antibody is purified through a protein A column, followed by peptide affinity purification.

Target Details

Target:	XRCC6
Alternative Name:	XRCC6 (XRCC6 Products)

Target Details

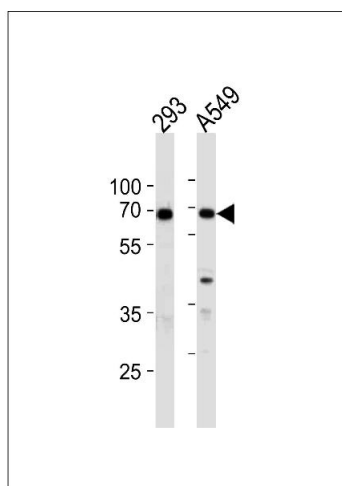
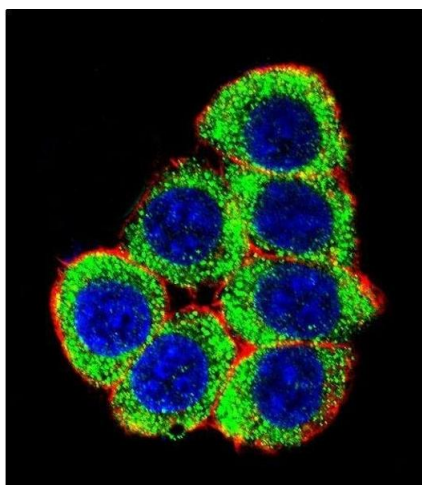
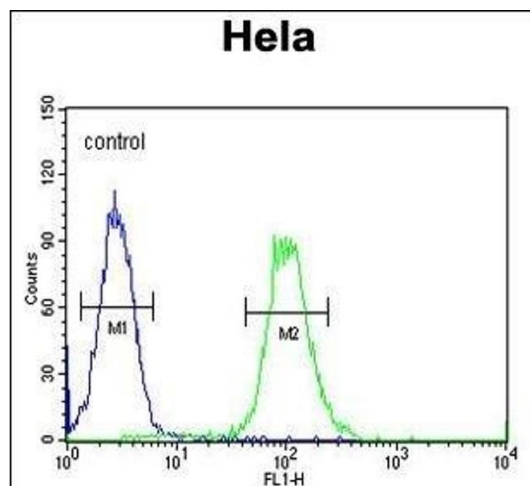
Background:	The p70/p80 autoantigen is a nuclear complex consisting of two subunits with molecular masses of approximately 70 and 80 kDa. The complex functions as a single-stranded DNA-dependent ATP-dependent helicase. The complex may be involved in the repair of nonhomologous DNA ends such as that required for double-strand break repair, transposition, and V(D)J recombination. High levels of autoantibodies to p70 and p80 have been found in some patients with systemic lupus erythematosus.
Molecular Weight:	69843
Gene ID:	2547
NCBI Accession:	NP_001460
UniProt:	P12956
Pathways:	DNA Damage Repair

Application Details

Application Notes:	IF: 1:10~50. WB: 1:1000. IHC-P: 1:50~100. FC: 1:10~50
Restrictions:	For Research Use only

Handling

Format:	Liquid
Buffer:	Purified polyclonal antibody supplied in PBS with 0.09 % (W/V) sodium azide.
Preservative:	Sodium azide
Precaution of Use:	This product contains Sodium azide: a POISONOUS AND HAZARDOUS SUBSTANCE which should be handled by trained staff only.
Storage:	4 °C,-20 °C
Storage Comment:	Maintain refrigerated at 2-8 °C for up to 6 months. For long term storage store at -20 °C in small aliquots to prevent freeze-thaw cycles.
Expiry Date:	6 months



Flow Cytometry

Image 1. XRCC6 Antibody (Center) (ABIN651281 and ABIN2840168) flow cytometric analysis of Hela cells (right histogram) compared to a negative control cell (left histogram). FITC-conjugated goat-anti-rabbit secondary antibodies were used for the analysis.

Immunofluorescence

Image 2. Confocal immunofluorescent analysis of XRCC6 Antibody (Center) (ABIN651281 and ABIN2840168) with 293 cell followed by Alexa Fluor 488-conjugated goat anti-rabbit IgG (green). Actin filaments have been labeled with Alexa Fluor 555 phalloidin (red). DAPI was used to stain the cell nuclear (blue).

Western Blotting

Image 3. XRCC6 Antibody (Center) (ABIN651281 and ABIN2840168) western blot analysis in 293, A549 cell line lysates (35 µg/lane). This demonstrates the XRCC6 antibody detected the XRCC6 protein (arrow).

Please check the [product details page](#) for more images. Overall 4 images are available for ABIN651281.