

Datasheet for ABIN651286

## anti-Glucose-6-Phosphate Dehydrogenase antibody (AA 297-326)



[Go to Product page](#)

### 3 Images

#### Overview

Quantity:	400 µL
Target:	Glucose-6-Phosphate Dehydrogenase (G6PD)
Binding Specificity:	AA 297-326
Reactivity:	Human
Host:	Rabbit
Clonality:	Polyclonal
Conjugate:	This Glucose-6-Phosphate Dehydrogenase antibody is un-conjugated
Application:	Western Blotting (WB), Flow Cytometry (FACS), Immunohistochemistry (Paraffin-embedded Sections) (IHC (p))

#### Product Details

Immunogen:	This G6PD antibody is generated from rabbits immunized with a KLH conjugated synthetic peptide between 297-326 amino acids from the Central region of human G6PD.
Clone:	RB18977
Isotype:	Ig Fraction
Purification:	This antibody is prepared by Saturated Ammonium Sulfate (SAS) precipitation followed by dialysis against PBS.

#### Target Details

Target:	Glucose-6-Phosphate Dehydrogenase (G6PD)
Alternative Name:	G6PD ( <a href="#">G6PD Products</a> )

## Target Details

---

Background:	G6PD encodes glucose-6-phosphate dehydrogenase. This protein is a cytosolic enzyme encoded by a housekeeping X-linked gene whose main function is to produce NADPH, a key electron donor in the defense against oxidizing agents and in reductive biosynthetic reactions. G6PD is remarkable for its genetic diversity. Many variants of G6PD, mostly produced from missense mutations, have been described with wide ranging levels of enzyme activity and associated clinical symptoms. G6PD deficiency may cause neonatal jaundice, acute hemolysis, or severe chronic non-spherocytic hemolytic anemia.
Molecular Weight:	59257
Gene ID:	2539
NCBI Accession:	<a href="#">NP_000393</a> , <a href="#">NP_001035810</a>
UniProt:	<a href="#">P11413</a>
Pathways:	<a href="#">Regulation of Systemic Arterial Blood Pressure by Hormones</a>

## Application Details

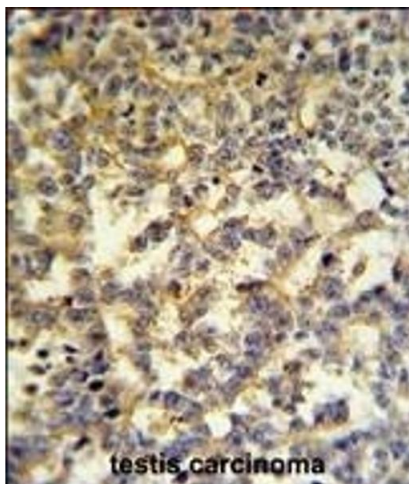
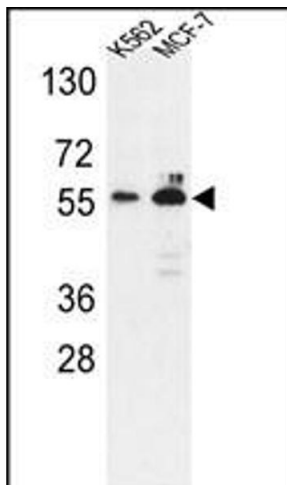
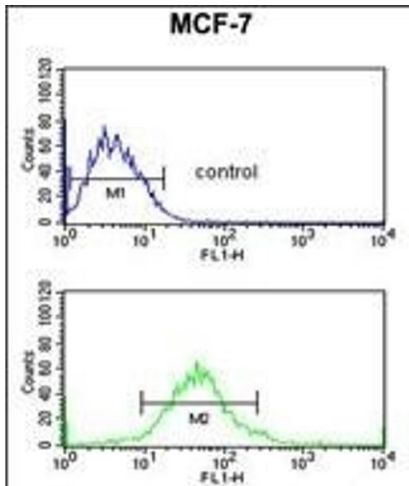
---

Application Notes:	WB: 1:1000. IHC-P: 1:50~100. FC: 1:10~50
Restrictions:	For Research Use only

## Handling

---

Format:	Liquid
Buffer:	Purified polyclonal antibody supplied in PBS with 0.09 % (W/V) sodium azide.
Preservative:	Sodium azide
Precaution of Use:	This product contains Sodium azide: a POISONOUS AND HAZARDOUS SUBSTANCE which should be handled by trained staff only.
Storage:	4 °C,-20 °C
Storage Comment:	Maintain refrigerated at 2-8 °C for up to 6 months. For long term storage store at -20 °C in small aliquots to prevent freeze-thaw cycles.
Expiry Date:	6 months



### Flow Cytometry

**Image 1.** G6PD Antibody (Center) (ABIN651286 and ABIN2840171) flow cytometric analysis of MCF-7 cells (bottom histogram) compared to a negative control cell (top histogram). FITC-conjugated goat-anti-rabbit secondary antibodies were used for the analysis.

### Western Blotting

**Image 2.** Western blot analysis of G6PD Antibody (Center) (ABIN651286 and ABIN2840171) in K562, MCF-7 cell line lysates (35 µg/lane). G6PD (arrow) was detected using the purified Pab.

### Immunohistochemistry (Paraffin-embedded Sections)

**Image 3.** G6PD Antibody (Center) (ABIN651286 and ABIN2840171) IHC analysis in formalin fixed and paraffin embedded testis followed by peroxidase conjugation of the secondary antibody and DAB staining. This data demonstrates the use of the G6PD Antibody (Center) for immunohistochemistry. Clinical relevance has not been evaluated.