

Datasheet for ABIN651296

**anti-Peptide YY antibody (C-Term)**

4 Images

1 Publication

[Go to Product page](#)

## Overview

Quantity:	400 µL
Target:	Peptide YY (PYY)
Binding Specificity:	AA 67-94, C-Term
Reactivity:	Human
Host:	Rabbit
Clonality:	Polyclonal
Conjugate:	This Peptide YY antibody is un-conjugated
Application:	Western Blotting (WB), Immunofluorescence (IF), Immunohistochemistry (Paraffin-embedded Sections) (IHC (p)), Flow Cytometry (FACS)

## Product Details

Immunogen:	This PYY antibody is generated from rabbits immunized with a KLH conjugated synthetic peptide between 67-94 amino acids from the C-terminal region of human PYY.
Clone:	RB21254
Isotype:	Ig Fraction
Purification:	This antibody is purified through a protein A column, followed by peptide affinity purification.

## Target Details

Target:	Peptide YY (PYY)
Alternative Name:	PYY ( <a href="#">PYY Products</a> )

## Target Details

Background:	PYY gut peptide inhibits exocrine pancreatic secretion, has a vasoconstrictory action and inhibits jejunal and colonic mobility.
Molecular Weight:	11145
Gene ID:	5697
NCBI Accession:	<a href="#">NP_004151</a>
UniProt:	<a href="#">P10082</a>

## Application Details

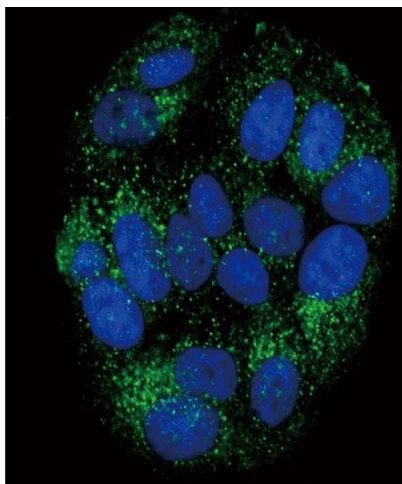
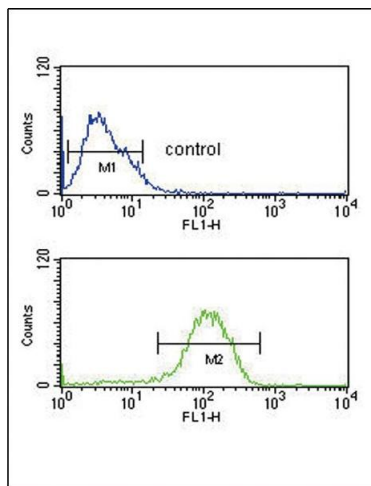
Application Notes:	IF: 1:10~50. WB: 1:1000. IHC-P: 1:10~50. FC: 1:10~50
Restrictions:	For Research Use only

## Handling

Format:	Liquid
Buffer:	Purified polyclonal antibody supplied in PBS with 0.09 % (W/V) sodium azide.
Preservative:	Sodium azide
Precaution of Use:	This product contains Sodium azide: a POISONOUS AND HAZARDOUS SUBSTANCE which should be handled by trained staff only.
Storage:	4 °C,-20 °C
Storage Comment:	Maintain refrigerated at 2-8 °C for up to 6 months. For long term storage store at -20 °C in small aliquots to prevent freeze-thaw cycles.
Expiry Date:	6 months

## Publications

Product cited in:	Smith, Wietgreffe, Shang, Reilly, Southern, Perkey, Duan, Kohler, Müller, Robinson, Carlis, Li, Johnson, Haase: "Live simian immunodeficiency virus vaccine correlate of protection: immune complex-inhibitory Fc receptor interactions that reduce target cell availability." in: <b>Journal of immunology (Baltimore, Md. : 1950)</b> , Vol. 193, Issue 6, pp. 3126-33, (2014) ( <a href="#">PubMed</a> ).
-------------------	--



### Flow Cytometry

**Image 1.** PYY Antibody (C-term) (ABIN651296 and ABIN2840175) flow cytometric analysis of MCF-7 cells (bottom histogram) compared to a negative control cell (top histogram). FITC-conjugated goat-anti-rabbit secondary antibodies were used for the analysis.

### Western Blotting

**Image 2.** Western blot analysis of PYY Antibody (C-term) (ABIN651296 and ABIN2840175) in MCF-7 cell line lysates (35 µg/lane). PYY (arrow) was detected using the purified Pab.

### Immunofluorescence

**Image 3.** Confocal immunofluorescent analysis of PYY Antibody (C-term) (ABIN651296 and ABIN2840175) with MCF-7 cell followed by Alexa Fluor<sup>®</sup>488-conjugated goat anti-rabbit IgG (green). DAPI was used to stain the cell nuclear (blue).

Please check the [product details page](#) for more images. Overall 4 images are available for ABIN651296.