

Datasheet for ABIN651313
anti-ZFYVE16 antibody (N-Term)

3 Images

[Go to Product page](#)

Overview

Quantity:	400 µL
Target:	ZFYVE16
Binding Specificity:	AA 375-404, N-Term
Reactivity:	Human
Host:	Rabbit
Clonality:	Polyclonal
Conjugate:	This ZFYVE16 antibody is un-conjugated
Application:	Western Blotting (WB), Flow Cytometry (FACS), Immunohistochemistry (Paraffin-embedded Sections) (IHC (p))

Product Details

Immunogen:	This ZFYVE16 antibody is generated from rabbits immunized with a KLH conjugated synthetic peptide between 375-404 amino acids from the N-terminal region of human ZFYVE16.
Clone:	RB23251
Isotype:	Ig Fraction
Purification:	This antibody is purified through a protein A column, followed by peptide affinity purification.

Target Details

Target:	ZFYVE16
Alternative Name:	ZFYVE16 (ZFYVE16 Products)

Target Details

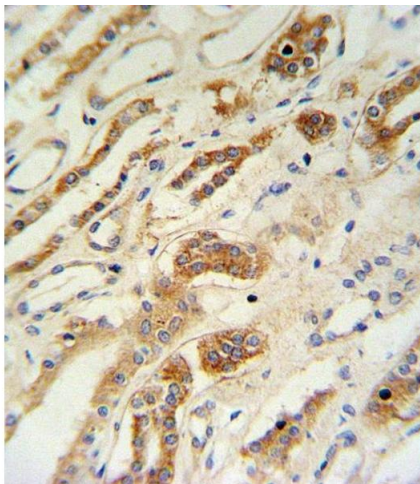
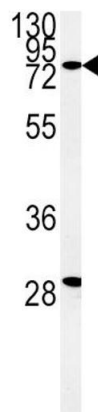
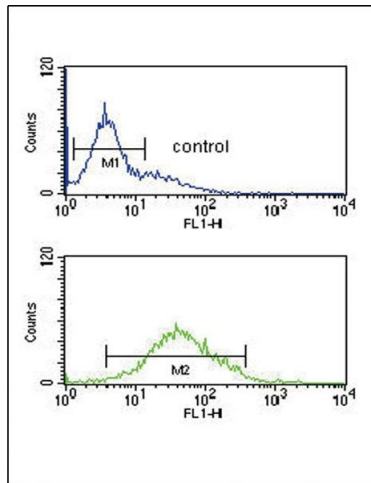
Background:	The ZFYVE16 gene encodes endofin, an endosomal protein implicated in regulating membrane trafficking. It is characterized by the presence of a phosphatidylinositol 3-phosphate-binding FYVE domain positioned in the middle of the molecule.
Molecular Weight:	168903
Gene ID:	9765
NCBI Accession:	NP_001098721 , NP_055548
UniProt:	Q7Z3T8

Application Details

Application Notes:	WB: 1:1000. IHC-P: 1:10~50. FC: 1:10~50
Restrictions:	For Research Use only

Handling

Format:	Liquid
Buffer:	Purified polyclonal antibody supplied in PBS with 0.09 % (W/V) sodium azide.
Preservative:	Sodium azide
Precaution of Use:	This product contains Sodium azide: a POISONOUS AND HAZARDOUS SUBSTANCE which should be handled by trained staff only.
Storage:	4 °C, -20 °C
Storage Comment:	Maintain refrigerated at 2-8 °C for up to 6 months. For long term storage store at -20 °C in small aliquots to prevent freeze-thaw cycles.
Expiry Date:	6 months



Flow Cytometry

Image 1. ZFYVE16 Antibody (N-term) (ABIN651313 and ABIN2840182) flow cytometric analysis of K562 cells (bottom histogram) compared to a negative control cell (top histogram). FITC-conjugated goat-anti-rabbit secondary antibodies were used for the analysis.

Western Blotting

Image 2. Western blot analysis of ZFYVE16 Antibody (N-term) (ABIN651313 and ABIN2840182) in K562 cell line lysates (35 µg/lane). ZFYVE16 (arrow) was detected using the purified Pab.

Immunohistochemistry (Paraffin-embedded Sections)

Image 3. ZFYVE16 Antibody (N-term) (ABIN651313 and ABIN2840182) IHC analysis in formalin fixed and paraffin embedded lung tissue followed by peroxidase conjugation of the secondary antibody and DAB staining. This data demonstrates the use of the ZFYVE16 Antibody (N-term) for immunohistochemistry. Clinical relevance has not been evaluated.