



[Go to Product page](#)

Datasheet for ABIN651323

## anti-TMEM222 antibody (AA 107-135)

### 2 Images

#### Overview

Quantity:	400 µL
Target:	TMEM222
Binding Specificity:	AA 107-135
Reactivity:	Human, Mouse
Host:	Rabbit
Clonality:	Polyclonal
Conjugate:	This TMEM222 antibody is un-conjugated
Application:	Western Blotting (WB), Immunohistochemistry (Paraffin-embedded Sections) (IHC (p))

#### Product Details

Immunogen:	This TM222 antibody is generated from rabbits immunized with a KLH conjugated synthetic peptide between 107-135 amino acids from the Central region of human TM222.
Clone:	RB24760
Isotype:	Ig Fraction
Purification:	This antibody is purified through a protein A column, followed by peptide affinity purification.

#### Target Details

Target:	TMEM222
Alternative Name:	TM222 ( <a href="#">TMEM222 Products</a> )
Background:	The function of this protein has not been specifically defined.

## Target Details

Molecular Weight:	23230
Gene ID:	84065
NCBI Accession:	<a href="#">NP_115501</a>
UniProt:	<a href="#">Q9H0R3</a>

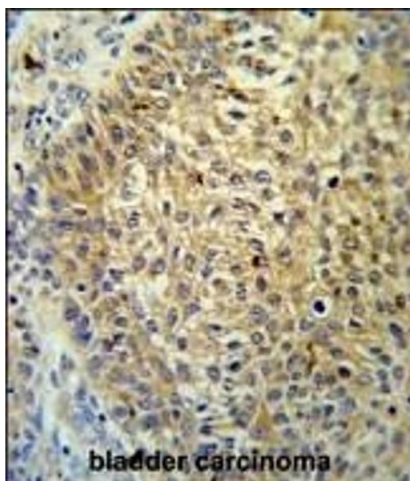
## Application Details

Application Notes:	WB: 1:1000. IHC-P: 1:50~100
Restrictions:	For Research Use only

## Handling

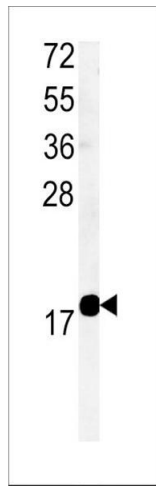
Format:	Liquid
Buffer:	Purified polyclonal antibody supplied in PBS with 0.09 % (W/V) sodium azide.
Preservative:	Sodium azide
Precaution of Use:	This product contains Sodium azide: a POISONOUS AND HAZARDOUS SUBSTANCE which should be handled by trained staff only.
Storage:	4 °C,-20 °C
Storage Comment:	Maintain refrigerated at 2-8 °C for up to 6 months. For long term storage store at -20 °C in small aliquots to prevent freeze-thaw cycles.
Expiry Date:	6 months

## Images



### Immunohistochemistry (Paraffin-embedded Sections)

**Image 1.** T Antibody (Center) (ABIN651323 and ABIN2840187) IHC analysis in formalin fixed and paraffin embedded bladder carcinoma followed by peroxidase conjugation of the secondary antibody and DAB staining. This data demonstrates the use of the T Antibody (Center) for immunohistochemistry. Clinical relevance has not been evaluated.



### Western Blotting

**Image 2.** Western blot analysis of T Antibody (Center) (ABIN651323 and ABIN2840187) in mouse bladder tissue lysates (35 µg/lane). T (arrow) was detected using the purified Pab.