

Datasheet for ABIN651326
anti-IFT20 antibody (Center)[Go to Product page](#)

2 Images

Overview

Quantity:	400 µL
Target:	IFT20
Binding Specificity:	AA 44-71, Center
Reactivity:	Human, Mouse
Host:	Rabbit
Clonality:	Polyclonal
Conjugate:	This IFT20 antibody is un-conjugated
Application:	Western Blotting (WB), Immunohistochemistry (Paraffin-embedded Sections) (IHC (p))

Product Details

Immunogen:	This IFT20 antibody is generated from rabbits immunized with a KLH conjugated synthetic peptide between 44-71 AA from the Central region of human IFT20.
Clone:	RB24809
Isotype:	Ig Fraction
Specificity:	This IFT20 antibody is generated from rabbits immunized with a KLH conjugated synthetic peptide between 50-80 amino acids from the Central region of human IFT20.
Predicted Reactivity:	Cow (Bovine)
Purification:	This antibody is purified through a protein A column, followed by peptide affinity purification.

Target Details

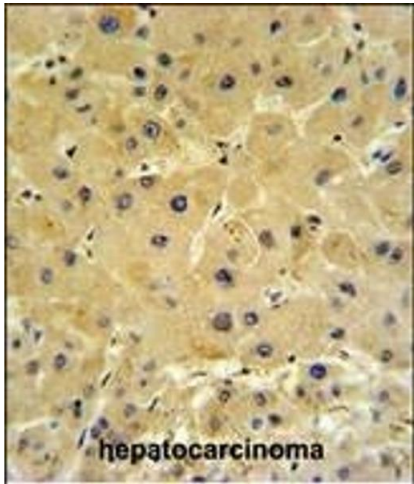
Target:	IFT20
Alternative Name:	IFT20 (IFT20 Products)
Background:	<p>IFT20 is part of intraflagellar transport (IFT) particles involved in ciliary process assembly.</p> <p>IFT20 may play a role in the trafficking of ciliary membrane proteins from the Golgi complex to the cilium.</p> <p>Synonyms: Intraflagellar transport protein 20 homolog, hIFT20,IFT20</p>
Molecular Weight:	15281 DA
Gene ID:	90410
UniProt:	Q8IY31
Pathways:	Hedgehog Signaling

Application Details

Application Notes:	WB = 1:1000, IHC (p) = 1:50-100
Restrictions:	For Research Use only

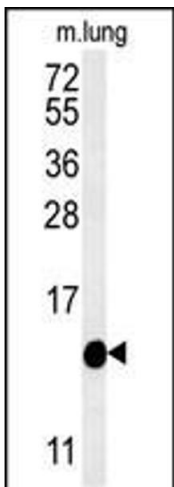
Handling

Format:	Liquid
Concentration:	0.36 mg/mL
Buffer:	PBS with 0.09 % (W/V) sodium azide
Preservative:	Sodium azide
Precaution of Use:	This product contains sodium azide: a POISONOUS AND HAZARDOUS SUBSTANCE which should be handled by trained staff only.
Storage:	4 °C/-20 °C
Storage Comment:	Maintain refrigerated at 2-8 °C for up to 6 months. For long term storage store at -20 °C in small aliquots to prevent freeze-thaw cycles.
Expiry Date:	6 months



Immunohistochemistry (Paraffin-embedded Sections)

Image 1. IFT20 Antibody (Center) IHC analysis in formalin fixed and paraffin embedded hepatocarcinoma followed by peroxidase conjugation of the secondary antibody and DAB staining. This data demonstrates the use of the IFT20 Antibody (Center) for immunohistochemistry. Clinical relevance has not been evaluated.



Western Blotting

Image 2. Western blot analysis of IFT20 Antibody (Center) in mouse lung tissue lysates (35 µg/lane).IFT20 (arrow) was detected using the purified Pab.