

Datasheet for ABIN651329  
**anti-Tescalcin antibody (C-Term)**

## 3 Images

[Go to Product page](#)

## Overview

Quantity:	400 µL
Target:	Tescalcin (TESC)
Binding Specificity:	AA 88-116, C-Term
Reactivity:	Human, Mouse
Host:	Rabbit
Clonality:	Polyclonal
Conjugate:	This Tescalcin antibody is un-conjugated
Application:	Western Blotting (WB), Flow Cytometry (FACS), Immunohistochemistry (Paraffin-embedded Sections) (IHC (p))

## Product Details

Immunogen:	This TESC antibody is generated from rabbits immunized with a KLH conjugated synthetic peptide between 88-116 amino acids from the C-terminal region of human TESC.
Clone:	RB25637
Isotype:	IgG
Purification:	This antibody is purified through a protein A column, followed by peptide affinity purification.

## Target Details

Target:	Tescalcin (TESC)
Alternative Name:	TESC ( <a href="#">TESC Products</a> )

## Target Details

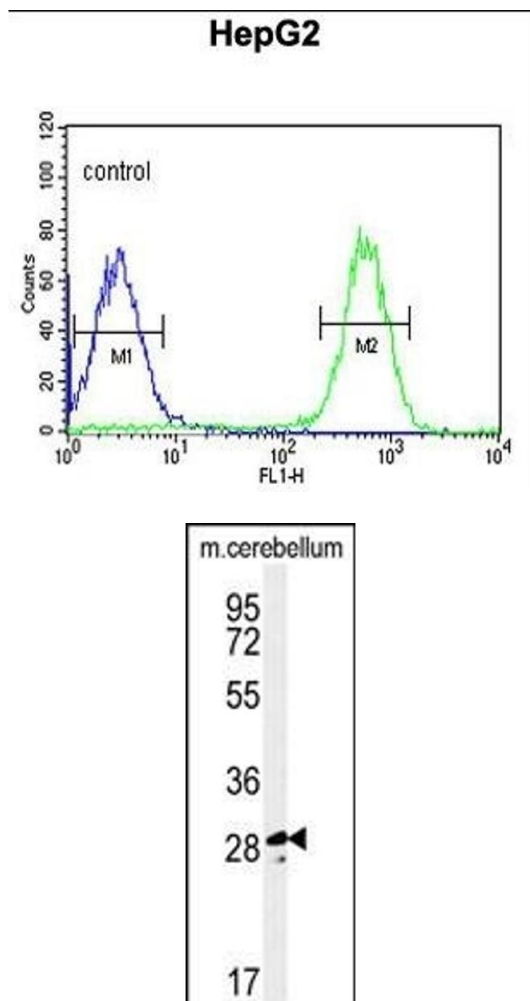
Background:	Essential for the coupling of ERK cascade activation with the expression of ETS family genes in megakaryocytic differentiation.
Molecular Weight:	24750
Gene ID:	54997
NCBI Accession:	<a href="#">NP_001161797</a> , <a href="#">NP_060369</a>
UniProt:	<a href="#">Q96BS2</a>
Pathways:	<a href="#">Proton Transport</a>

## Application Details

Application Notes:	WB: 1:1000. IHC-P: 1:50~100. FC: 1:10~50
Restrictions:	For Research Use only

## Handling

Format:	Liquid
Buffer:	Purified polyclonal antibody supplied in PBS with 0.09 % (W/V) sodium azide.
Preservative:	Sodium azide
Precaution of Use:	This product contains Sodium azide: a POISONOUS AND HAZARDOUS SUBSTANCE which should be handled by trained staff only.
Storage:	4 °C, -20 °C
Storage Comment:	Maintain refrigerated at 2-8 °C for up to 6 months. For long term storage store at -20 °C in small aliquots to prevent freeze-thaw cycles.
Expiry Date:	6 months

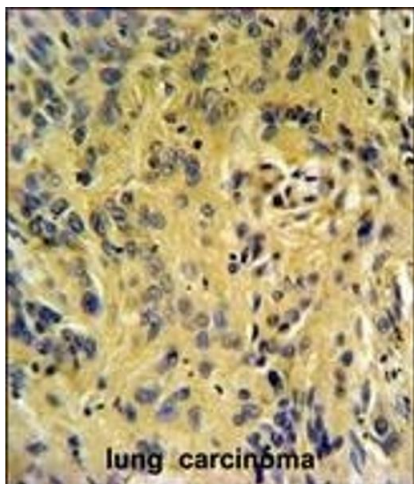


Flow Cytometry

**Image 1.** TESC Antibody (C-term) (ABIN651329 and ABIN2840191) flow cytometric analysis of HepG2 cells (right histogram) compared to a negative control cell (left histogram).FITC-conjugated goat-anti-rabbit secondary antibodies were used for the analysis.

Western Blotting

**Image 2.** Western blot analysis of TESC Antibody (C-term) (ABIN651329 and ABIN2840191) in mouse cerebellum tissue lysates (35 µg/lane).TESC (arrow) was detected using the purified Pab.



Immunohistochemistry (Paraffin-embedded Sections)

**Image 3.** TESC Antibody (C-term) (ABIN651329 and ABIN2840191) IHC analysis in formalin fixed and paraffin embedded human lung carcinoma followed by peroxidase conjugation of the secondary antibody and DAB staining. This data demonstrates the use of the TESC Antibody (C-term) for immunohistochemistry. Clinical relevance has not been evaluated.