



[Go to Product page](#)

Datasheet for ABIN651333
anti-SGF29 antibody (C-Term)

3 Images

Overview

Quantity:	400 µL
Target:	SGF29 (CCDC101)
Binding Specificity:	AA 179-208, C-Term
Reactivity:	Human
Host:	Rabbit
Clonality:	Polyclonal
Conjugate:	This SGF29 antibody is un-conjugated
Application:	Western Blotting (WB), Flow Cytometry (FACS), Immunohistochemistry (Paraffin-embedded Sections) (IHC (p))

Product Details

Immunogen:	This SGF29 antibody is generated from rabbits immunized with a KLH conjugated synthetic peptide between 179-208 amino acids from the C-terminal region of human SGF29.
Clone:	RB26232
Isotype:	Ig Fraction
Predicted Reactivity:	C, M, Rat
Purification:	This antibody is purified through a protein A column, followed by peptide affinity purification.

Target Details

Target:	SGF29 (CCDC101)
---------	-----------------

Target Details

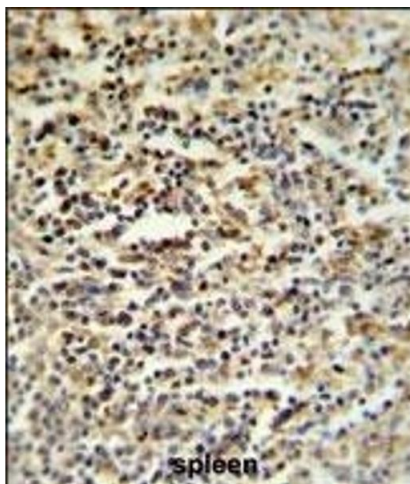
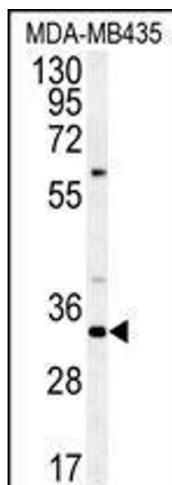
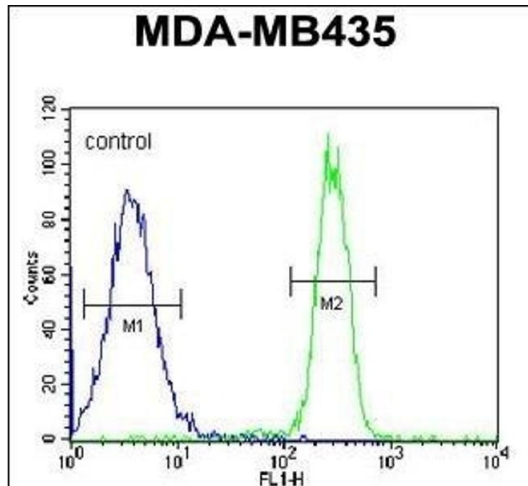
Alternative Name:	SGF29 (CCDC101 Products)
Background:	CCDC101 is a subunit of 2 histone acetyltransferase complexes: the ADA2A (TADA2A, MIM 602276)-containing (ATAC) complex and the SPT3 (SUPT3H, MIM 602947)-TAF9 (MIM 600822)-GCN5 (KAT2A, MIM 602301)/PCAF (KAT2B, MIM 602303) acetylase (STAGA) complex. Both of these complexes contain either GCN5 or PCAF, which are paralogous acetyltransferases.
Molecular Weight:	33238
Gene ID:	112869
NCBI Accession:	NP_612423
UniProt:	Q96ES7

Application Details

Application Notes:	WB: 1:1000. IHC-P: 1:50~100. FC: 1:10~50
Restrictions:	For Research Use only

Handling

Format:	Liquid
Buffer:	Purified polyclonal antibody supplied in PBS with 0.09 % (W/V) sodium azide.
Preservative:	Sodium azide
Precaution of Use:	This product contains Sodium azide: a POISONOUS AND HAZARDOUS SUBSTANCE which should be handled by trained staff only.
Storage:	4 °C, -20 °C
Storage Comment:	Maintain refrigerated at 2-8 °C for up to 6 months. For long term storage store at -20 °C in small aliquots to prevent freeze-thaw cycles.
Expiry Date:	6 months



Flow Cytometry

Image 1. SGF29 Antibody (C-term) (ABIN651333 and ABIN2840193) flow cytometric analysis of MDA-M cells (right histogram) compared to a negative control cell (left histogram). FITC-conjugated goat-anti-rabbit secondary antibodies were used for the analysis.

Western Blotting

Image 2. Western blot analysis of SGF29 Antibody (C-term) (ABIN651333 and ABIN2840193) in MDA-M cell line lysates (35 µg/lane). SGF29 (arrow) was detected using the purified Pab.

Immunohistochemistry (Paraffin-embedded Sections)

Image 3. SGF29 Antibody (C-term) (ABIN651333 and ABIN2840193) IHC analysis in formalin fixed and paraffin embedded human spleen tissue followed by peroxidase conjugation of the secondary antibody and DAB staining. This data demonstrates the use of the SGF29 Antibody (C-term) for immunohistochemistry. Clinical relevance has not been evaluated.