

Datasheet for ABIN651354  
**anti-ENTPD8 antibody (C-Term)**[Go to Product page](#)

## 1 Image

## Overview

Quantity:	400 µL
Target:	ENTPD8
Binding Specificity:	AA 396-423, C-Term
Reactivity:	Human, Hamster
Host:	Rabbit
Clonality:	Polyclonal
Conjugate:	This ENTPD8 antibody is un-conjugated
Application:	Western Blotting (WB)

## Product Details

Immunogen:	This ENTPD8 antibody is generated from rabbits immunized with a KLH conjugated synthetic peptide between 396-423 amino acids from the C-terminal region of human ENTPD8.
Clone:	RB26306
Isotype:	Ig Fraction
Purification:	This antibody is purified through a protein A column, followed by peptide affinity purification.

## Target Details

Target:	ENTPD8
Alternative Name:	ENTPD8 ( <a href="#">ENTPD8 Products</a> )
Background:	ENTPD8 is canalicular ectonucleoside NTPDase responsible for the main hepatic NTPDase

## Target Details

activity. It is ectonucleoside NTPDases catalyze the hydrolysis of gamma-and beta-phosphate residues of nucleotides, playing a central role in concentration of extracellular nucleotides. ENTPD8 has activity toward ATP, ADP, UTP and UDP, but not toward AMP.

Molecular Weight: 53904

Gene ID: 377841

NCBI Accession: [NP\\_001028285](#), [NP\\_940987](#)

UniProt: [Q5MY95](#)

## Application Details

Application Notes: WB: 1:1000

Restrictions: For Research Use only

## Handling

Format: Liquid

Buffer: Purified polyclonal antibody supplied in PBS with 0.09 % (W/V) sodium azide.

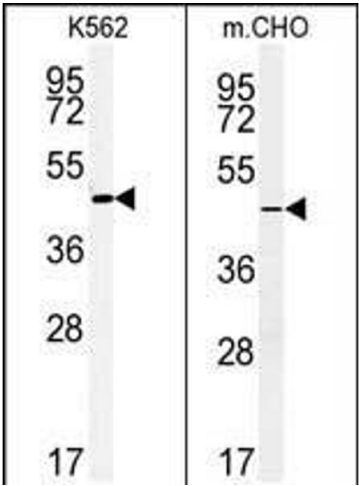
Preservative: Sodium azide

Precaution of Use: This product contains Sodium azide: a POISONOUS AND HAZARDOUS SUBSTANCE which should be handled by trained staff only.

Storage: 4 °C, -20 °C

Storage Comment: Maintain refrigerated at 2-8 °C for up to 6 months. For long term storage store at -20 °C in small aliquots to prevent freeze-thaw cycles.

Expiry Date: 6 months



Western Blotting

**Image 1.** (LEFT)Western blot analysis of ENTPD8 Antibody (C-term) (ABIN651354 and ABIN2840197) in K562 cell line lysates (35 µg/lane).ENTPD8 (arrow) was detected using the purified Pab. (RIGHT)Western blot analysis of ENTPD8 Antibody (C-term) (ABIN651354 and ABIN2840197) in CHO cell line lysates (35 µg/lane).ENTPD8 (arrow) was detected using the purified Pab.