

Datasheet for ABIN651356  
**anti-ELP6 antibody (C-Term)**[Go to Product page](#)

## 3 Images

## Overview

Quantity:	400 µL
Target:	ELP6
Binding Specificity:	AA 223-252, C-Term
Reactivity:	Human
Host:	Rabbit
Clonality:	Polyclonal
Conjugate:	This ELP6 antibody is un-conjugated
Application:	Western Blotting (WB), Flow Cytometry (FACS), Immunohistochemistry (Paraffin-embedded Sections) (IHC (p))

## Product Details

Immunogen:	This C3orf75 antibody is generated from rabbits immunized with a KLH conjugated synthetic peptide between 223-252 amino acids from the C-terminal region of human C3orf75.
Clone:	RB26152
Isotype:	Ig Fraction
Purification:	This antibody is purified through a protein A column, followed by peptide affinity purification.

## Target Details

Target:	ELP6
Alternative Name:	C3orf75 ( <a href="#">ELP6 Products</a> )

## Target Details

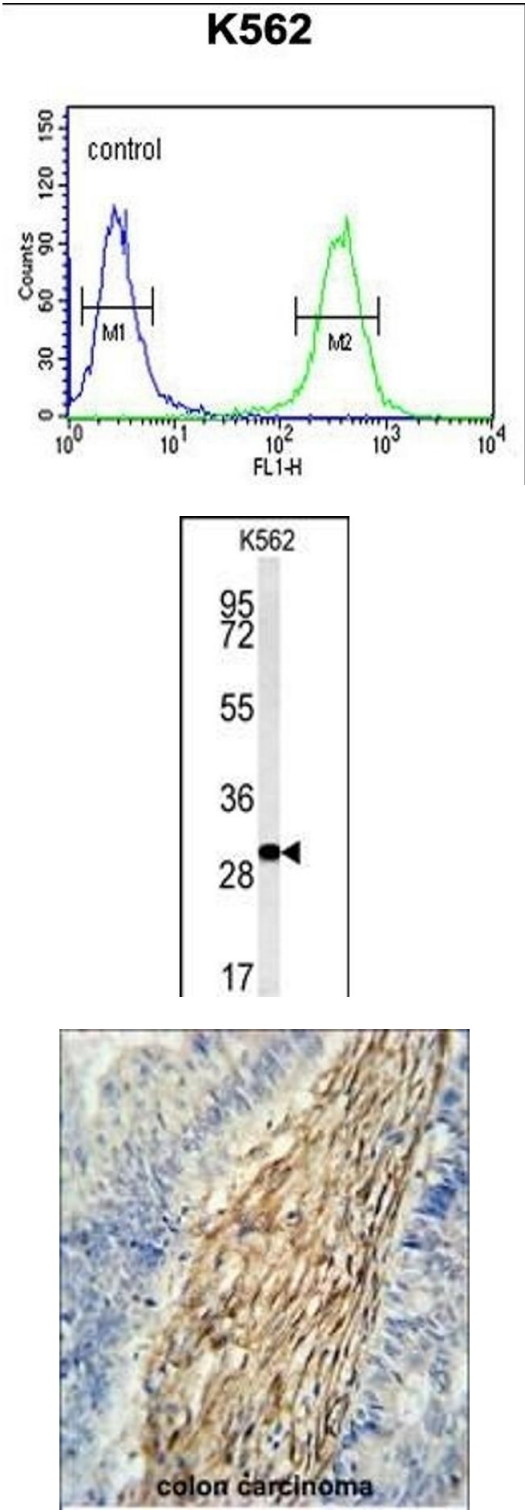
Background:	The function of this protein has not been specifically defined.
Molecular Weight:	29793
Gene ID:	54859
NCBI Accession:	<a href="#">NP_001026873</a>
UniProt:	<a href="#">Q0PNE2</a>

## Application Details

Application Notes:	WB: 1:1000. IHC-P: 1:50~100. FC: 1:10~50
Restrictions:	For Research Use only

## Handling

Format:	Liquid
Buffer:	Purified polyclonal antibody supplied in PBS with 0.09 % (W/V) sodium azide.
Preservative:	Sodium azide
Precaution of Use:	This product contains Sodium azide: a POISONOUS AND HAZARDOUS SUBSTANCE which should be handled by trained staff only.
Storage:	4 °C,-20 °C
Storage Comment:	Maintain refrigerated at 2-8 °C for up to 6 months. For long term storage store at -20 °C in small aliquots to prevent freeze-thaw cycles.
Expiry Date:	6 months



### Flow Cytometry

**Image 1.** C3orf75 Antibody (C-term) (ABIN651356 and ABIN2840198) flow cytometric analysis of K562 cells (right histogram) compared to a negative control cell (left histogram). FITC-conjugated goat-anti-rabbit secondary antibodies were used for the analysis.

### Western Blotting

**Image 2.** Western blot analysis of C3orf75 Antibody (C-term) (ABIN651356 and ABIN2840198) in K562 cell line lysates (35 µg/lane). C3orf75 (arrow) was detected using the purified Fab.

### Immunohistochemistry (Paraffin-embedded Sections)

**Image 3.** C3orf75 Antibody (C-term) (ABIN651356 and ABIN2840198) immunohistochemistry analysis in formalin fixed and paraffin embedded human colon carcinoma followed by peroxidase conjugation of the secondary antibody and DAB staining. This data demonstrates the use of the C3orf75 Antibody (C-term) for immunohistochemistry. Clinical relevance has not been evaluated.