



Datasheet for ABIN651358
anti-CCDC180 antibody (C-Term)



[Go to Product page](#)

3 Images

Overview

Quantity:	400 µL
Target:	CCDC180
Binding Specificity:	AA 1048-1077, C-Term
Reactivity:	Human, Mouse
Host:	Rabbit
Clonality:	Polyclonal
Conjugate:	This CCDC180 antibody is un-conjugated
Application:	Western Blotting (WB), Flow Cytometry (FACS), Immunohistochemistry (Paraffin-embedded Sections) (IHC (p))

Product Details

Immunogen:	This KIAA1529 antibody is generated from rabbits immunized with a KLH conjugated synthetic peptide between 1048-1077 amino acids from the C-terminal region of human KIAA1529.
Clone:	RB26317
Isotype:	Ig Fraction
Purification:	This antibody is purified through a protein A column, followed by peptide affinity purification.

Target Details

Target:	CCDC180
Alternative Name:	KIAA1529 (CCDC180 Products)

Target Details

Background: The function of this protein has not been specifically defined.

Molecular Weight: 197344

Gene ID: 57653

NCBI Accession: [NP_065944](#)

UniProt: [Q9P1Z9](#)

Application Details

Application Notes: WB: 1:1000. IHC-P: 1:50~100. FC: 1:10~50

Restrictions: For Research Use only

Handling

Format: Liquid

Buffer: Purified polyclonal antibody supplied in PBS with 0.09 % (W/V) sodium azide.

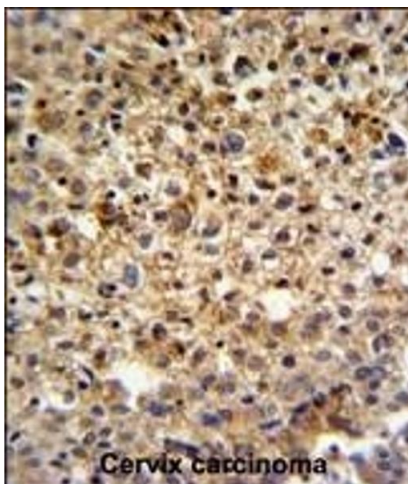
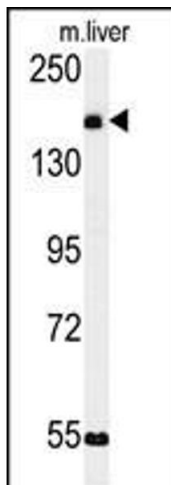
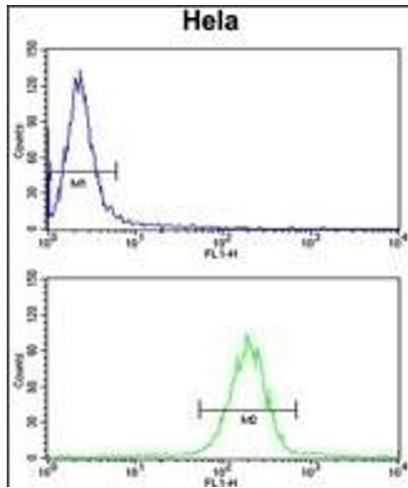
Preservative: Sodium azide

Precaution of Use: This product contains Sodium azide: a POISONOUS AND HAZARDOUS SUBSTANCE which should be handled by trained staff only.

Storage: 4 °C,-20 °C

Storage Comment: Maintain refrigerated at 2-8 °C for up to 6 months. For long term storage store at -20 °C in small aliquots to prevent freeze-thaw cycles.

Expiry Date: 6 months



Flow Cytometry

Image 1. KI Antibody (C-term) (ABIN651358 and ABIN2840200) flow cytometry analysis of HeLa cells (bottom histogram) compared to a negative control cell (top histogram). FITC-conjugated goat-anti-rabbit secondary antibodies were used for the analysis.

Western Blotting

Image 2. Western blot analysis of KI Antibody (C-term) (ABIN651358 and ABIN2840200) in mouse liver tissue lysates (35 µg/lane). KI (arrow) was detected using the purified Pab.

Immunohistochemistry (Paraffin-embedded Sections)

Image 3. KI Antibody (C-term) (ABIN651358 and ABIN2840200) IHC analysis in formalin fixed and paraffin embedded human cervix carcinoma followed by peroxidase conjugation of the secondary antibody and DAB staining. This data demonstrates the use of the KI Antibody (C-term) for immunohistochemistry. Clinical relevance has not been evaluated.