

Datasheet for ABIN651359

anti-SAMD9L antibody (C-Term)**2** Images[Go to Product page](#)

Overview

Quantity:	400 µL
Target:	SAMD9L
Binding Specificity:	AA 1149-1178, C-Term
Reactivity:	Human, Mouse
Host:	Rabbit
Clonality:	Polyclonal
Conjugate:	This SAMD9L antibody is un-conjugated
Application:	Western Blotting (WB), Immunohistochemistry (Paraffin-embedded Sections) (IHC (p))

Product Details

Immunogen:	This SAMD9L antibody is generated from rabbits immunized with a KLH conjugated synthetic peptide between 1149-1178 amino acids from the C-terminal region of human SAMD9L.
Clone:	RB26318
Isotype:	Ig Fraction
Purification:	This antibody is purified through a protein A column, followed by peptide affinity purification.

Target Details

Target:	SAMD9L
Alternative Name:	SAMD9L (SAMD9L Products)
Background:	The function of this protein has not been specifically defined.

Target Details

Molecular Weight:	184533
Gene ID:	219285
NCBI Accession:	NP_689916
UniProt:	Q8IVG5

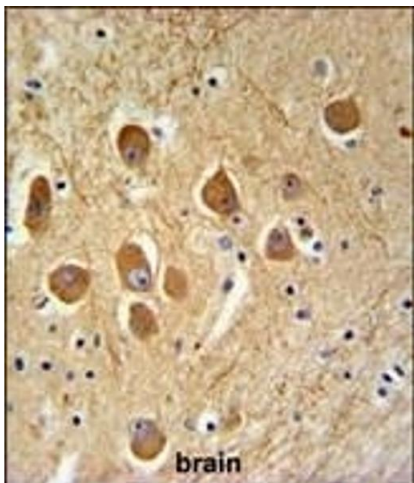
Application Details

Application Notes:	WB: 1:1000. IHC-P: 1:50~100
Restrictions:	For Research Use only

Handling

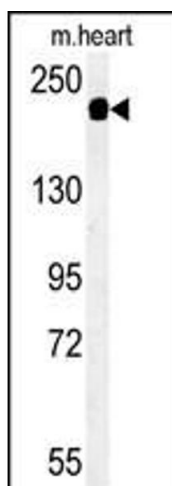
Format:	Liquid
Buffer:	Purified polyclonal antibody supplied in PBS with 0.09 % (W/V) sodium azide.
Preservative:	Sodium azide
Precaution of Use:	This product contains Sodium azide: a POISONOUS AND HAZARDOUS SUBSTANCE which should be handled by trained staff only.
Storage:	4 °C, -20 °C
Storage Comment:	Maintain refrigerated at 2-8 °C for up to 6 months. For long term storage store at -20 °C in small aliquots to prevent freeze-thaw cycles.
Expiry Date:	6 months

Images



Immunohistochemistry (Paraffin-embedded Sections)

Image 1. SD9L Antibody (C-term) (ABIN651359 and ABIN2840201) IHC analysis in formalin fixed and paraffin embedded human brain tissue followed by peroxidase conjugation of the secondary antibody and DAB staining. This data demonstrates the use of the SD9L Antibody (C-term) for immunohistochemistry. Clinical relevance has not been evaluated.



Western Blotting

Image 2. Western blot analysis of SD9L Antibody (C-term) (ABIN651359 and ABIN2840201) in mouse heart tissue lysates (35 µg/lane).SD9L (arrow) was detected using the purified Pab.