



Datasheet for ABIN651366  
**anti-KLHL9 antibody (AA 299-326)**



[Go to Product page](#)

3 Images

Overview

Quantity:	400 µL
Target:	KLHL9
Binding Specificity:	AA 299-326
Reactivity:	Human, Mouse
Host:	Rabbit
Clonality:	Polyclonal
Conjugate:	This KLHL9 antibody is un-conjugated
Application:	Western Blotting (WB), Flow Cytometry (FACS), Immunohistochemistry (Paraffin-embedded Sections) (IHC (p))

Product Details

Immunogen:	This KLHL9 antibody is generated from rabbits immunized with a KLH conjugated synthetic peptide between 299-326 amino acids from the Central region of human KLHL9.
Clone:	RB26346
Isotype:	Ig Fraction
Predicted Reactivity:	B
Purification:	This antibody is purified through a protein A column, followed by peptide affinity purification.

Target Details

Target:	KLHL9
---------	-------

## Target Details

---

Alternative Name:	KLHL9 ( <a href="#">KLHL9 Products</a> )
Background:	KLHL9 is substrate-specific adapter for a CUL3-based E3 ubiquitin-protein ligase complex. Within this complex, it controls the dynamic behavior of AURKB on mitotic chromosomes and thereby coordinates faithful mitotic progression and completion of cytokinesis.
Molecular Weight:	69429
Gene ID:	55958
NCBI Accession:	<a href="#">NP_061335</a>
UniProt:	<a href="#">Q9P2J3</a>

## Application Details

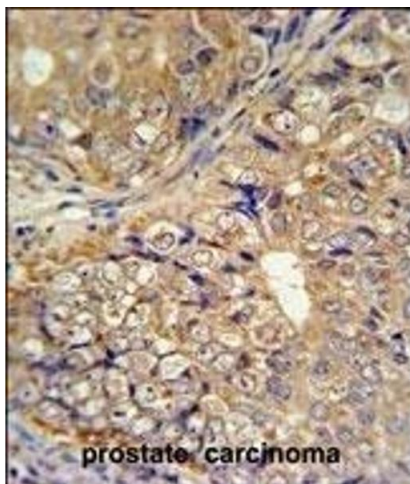
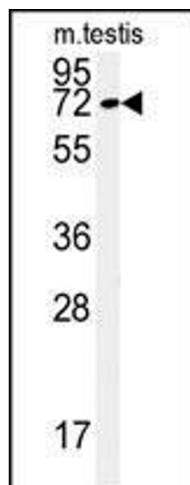
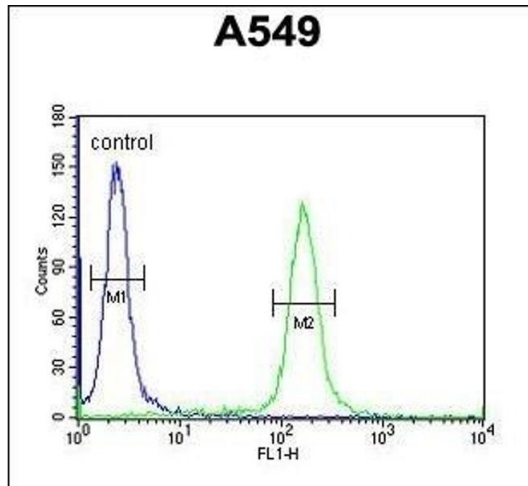
---

Application Notes:	WB: 1:1000. IHC-P: 1:50~100. FC: 1:10~50
Restrictions:	For Research Use only

## Handling

---

Format:	Liquid
Buffer:	Purified polyclonal antibody supplied in PBS with 0.09 % (W/V) sodium azide.
Preservative:	Sodium azide
Precaution of Use:	This product contains Sodium azide: a POISONOUS AND HAZARDOUS SUBSTANCE which should be handled by trained staff only.
Storage:	4 °C,-20 °C
Storage Comment:	Maintain refrigerated at 2-8 °C for up to 6 months. For long term storage store at -20 °C in small aliquots to prevent freeze-thaw cycles.
Expiry Date:	6 months



### Flow Cytometry

**Image 1.** KLHL9 Antibody (Center) (ABIN651366 and ABIN2840204) flow cytometric analysis of A549 cells (right histogram) compared to a negative control cell (left histogram). FITC-conjugated goat-anti-rabbit secondary antibodies were used for the analysis.

### Western Blotting

**Image 2.** Western blot analysis of KLHL9 Antibody (Center) (ABIN651366 and ABIN2840204) in mouse testis tissue lysates (35 µg/lane). KLHL9 (arrow) was detected using the purified Pab.

### Immunohistochemistry (Paraffin-embedded Sections)

**Image 3.** KLHL9 Antibody (Center) (ABIN651366 and ABIN2840204) IHC analysis in formalin fixed and paraffin embedded human prostate carcinoma followed by peroxidase conjugation of the secondary antibody and DAB staining. This data demonstrates the use of the KLHL9 Antibody (Center) for immunohistochemistry. Clinical relevance has not been evaluated.