

Datasheet for ABIN651368
anti-COPZ2 antibody (C-Term)

3 Images

[Go to Product page](#)

Overview

| | |
|----------------------|---|
| Quantity: | 400 µL |
| Target: | COPZ2 |
| Binding Specificity: | AA 156-184, C-Term |
| Reactivity: | Human, Mouse |
| Host: | Rabbit |
| Clonality: | Polyclonal |
| Conjugate: | This COPZ2 antibody is un-conjugated |
| Application: | Western Blotting (WB), Flow Cytometry (FACS), Immunohistochemistry (Paraffin-embedded Sections) (IHC (p)) |

Product Details

| | |
|---------------|--|
| Immunogen: | This COPZ2 antibody is generated from rabbits immunized with a KLH conjugated synthetic peptide between 156-184 amino acids from the C-terminal region of human COPZ2. |
| Clone: | RB22293 |
| Isotype: | Ig Fraction |
| Purification: | This antibody is purified through a protein A column, followed by peptide affinity purification. |

Target Details

| | |
|-------------------|--|
| Target: | COPZ2 |
| Alternative Name: | COPZ2 (COPZ2 Products) |

Target Details

Background: COPZ2 encodes a subunit of the coatamer protein complex, a seven-subunit complex that functions in the formation of COPI-type, non-clathrin-coated vesicles. COPI vesicles function in the retrograde Golgi-to-ER transport of dilysine-tagged proteins. COPZ2 is similar to a related family member, and the two encoded proteins form distinct isoforms of the coatamer protein complex.

Molecular Weight: 23548

Gene ID: 51226

NCBI Accession: [NP_057513](#)

UniProt: [Q9P299](#)

Application Details

Application Notes: WB: 1:1000. IHC-P: 1:50~100. FC: 1:10~50

Restrictions: For Research Use only

Handling

Format: Liquid

Buffer: Purified polyclonal antibody supplied in PBS with 0.09 % (W/V) sodium azide.

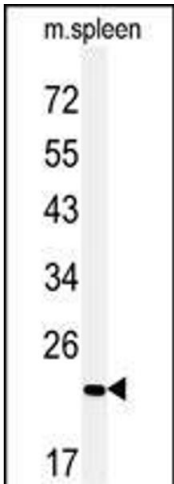
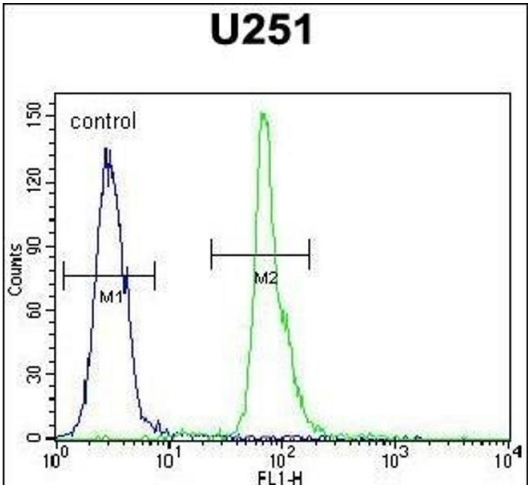
Preservative: Sodium azide

Precaution of Use: This product contains Sodium azide: a POISONOUS AND HAZARDOUS SUBSTANCE which should be handled by trained staff only.

Storage: 4 °C,-20 °C

Storage Comment: Maintain refrigerated at 2-8 °C for up to 6 months. For long term storage store at -20 °C in small aliquots to prevent freeze-thaw cycles.

Expiry Date: 6 months



Flow Cytometry

Image 1. COPZ2 Antibody (C-term) (ABIN651368 and ABIN2840206) flow cytometric analysis of cells (right histogram) compared to a negative control cell (left histogram). FITC-conjugated goat-anti-rabbit secondary antibodies were used for the analysis.

Western Blotting

Image 2. Western blot analysis of COPZ2 Antibody (C-term) (ABIN651368 and ABIN2840206) in mouse spleen tissue lysates (35 µg/lane). COPZ2 (arrow) was detected using the purified Fab.

Immunohistochemistry (Paraffin-embedded Sections)

Image 3. COPZ2 Antibody (C-term) (ABIN651368 and ABIN2840206) immunohistochemistry analysis in formalin fixed and paraffin embedded mouse heart tissue followed by peroxidase conjugation of the secondary antibody and DAB staining. This data demonstrates the use of the COPZ2 Antibody (C-term) for immunohistochemistry. Clinical relevance has not been evaluated.