

Datasheet for ABIN651370  
**anti-Acap3 antibody (N-Term)**

## 2 Images

[Go to Product page](#)

## Overview

Quantity:	400 µL
Target:	Acap3
Binding Specificity:	AA 101-130, N-Term
Reactivity:	Human
Host:	Rabbit
Clonality:	Polyclonal
Conjugate:	This Acap3 antibody is un-conjugated
Application:	Western Blotting (WB), Flow Cytometry (FACS)

## Product Details

Immunogen:	This ACAP3 antibody is generated from rabbits immunized with a KLH conjugated synthetic peptide between 101-130 amino acids from the N-terminal region of human ACAP3.
Clone:	RB26245
Isotype:	Ig Fraction
Purification:	This antibody is purified through a protein A column, followed by peptide affinity purification.

## Target Details

Target:	Acap3
Alternative Name:	ACAP3 ( <a href="#">Acap3 Products</a> )
Background:	ACAP3 is GTPase-activating protein for the ADP ribosylation factor family.

## Target Details

Molecular Weight:	92495
Gene ID:	116983
NCBI Accession:	<a href="#">NP_085152</a>
UniProt:	<a href="#">Q96P50</a>

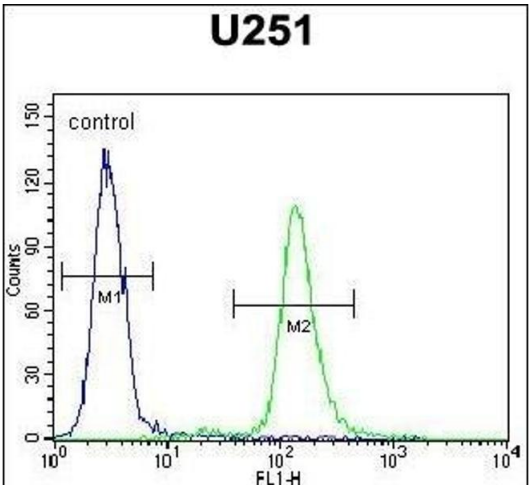
## Application Details

Application Notes:	WB: 1:1000. FC: 1:10~50
Restrictions:	For Research Use only

## Handling

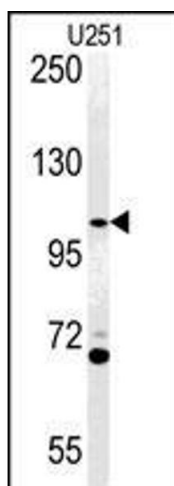
Format:	Liquid
Buffer:	Purified polyclonal antibody supplied in PBS with 0.09 % (W/V) sodium azide.
Preservative:	Sodium azide
Precaution of Use:	This product contains Sodium azide: a POISONOUS AND HAZARDOUS SUBSTANCE which should be handled by trained staff only.
Storage:	4 °C,-20 °C
Storage Comment:	Maintain refrigerated at 2-8 °C for up to 6 months. For long term storage store at -20 °C in small aliquots to prevent freeze-thaw cycles.
Expiry Date:	6 months

## Images



### Flow Cytometry

**Image 1.** AC Antibody (N-term) (ABIN651370 and ABIN2840207) flow cytometric analysis of cells (right histogram) compared to a negative control cell (left histogram). FITC-conjugated goat-anti-rabbit secondary antibodies were used for the analysis.



#### Western Blotting

**Image 2.** Western blot analysis of AC Antibody (N-term) (ABIN651370 and ABIN2840207) in cell line lysates (35  $\mu$ g/lane). AC (arrow) was detected using the purified Pab.