

Datasheet for ABIN651374

**anti-ATP4b antibody (N-Term)****2** Images[Go to Product page](#)

## Overview

Quantity:	400 µL
Target:	ATP4b
Binding Specificity:	AA 52-78, N-Term
Reactivity:	Human, Mouse
Host:	Rabbit
Clonality:	Polyclonal
Conjugate:	This ATP4b antibody is un-conjugated
Application:	Western Blotting (WB), Flow Cytometry (FACS)

## Product Details

Immunogen:	This ATP4B antibody is generated from rabbits immunized with a KLH conjugated synthetic peptide between 52-78 amino acids from the N-terminal region of human ATP4B.
Clone:	RB26168
Isotype:	Ig Fraction
Purification:	This antibody is purified through a protein A column, followed by peptide affinity purification.

## Target Details

Target:	ATP4b
Alternative Name:	ATP4B ( <a href="#">ATP4b Products</a> )
Background:	ATP4B belongs to a family of P-type cation-transporting ATPases. The gastric H <sup>+</sup> , K <sup>+</sup> -ATPase is

## Target Details

a heterodimer consisting of a high molecular weight catalytic alpha subunit and a smaller but heavily glycosylated beta subunit. This enzyme is a proton pump that catalyzes the hydrolysis of ATP coupled with the exchange of H(+) and K(+) ions across the plasma membrane. It is also responsible for gastric acid secretion. This gene encodes the beta subunit of the gastric H<sup>+</sup>, K<sup>+</sup>-ATPase.

Molecular Weight: 33367

Gene ID: 496

NCBI Accession: [NP\\_000696](#)

UniProt: [P51164](#)

Pathways: [Proton Transport](#)

## Application Details

Application Notes: WB: 1:1000. FC: 1:10~50

Restrictions: For Research Use only

## Handling

Format: Liquid

Buffer: Purified polyclonal antibody supplied in PBS with 0.09 % (W/V) sodium azide.

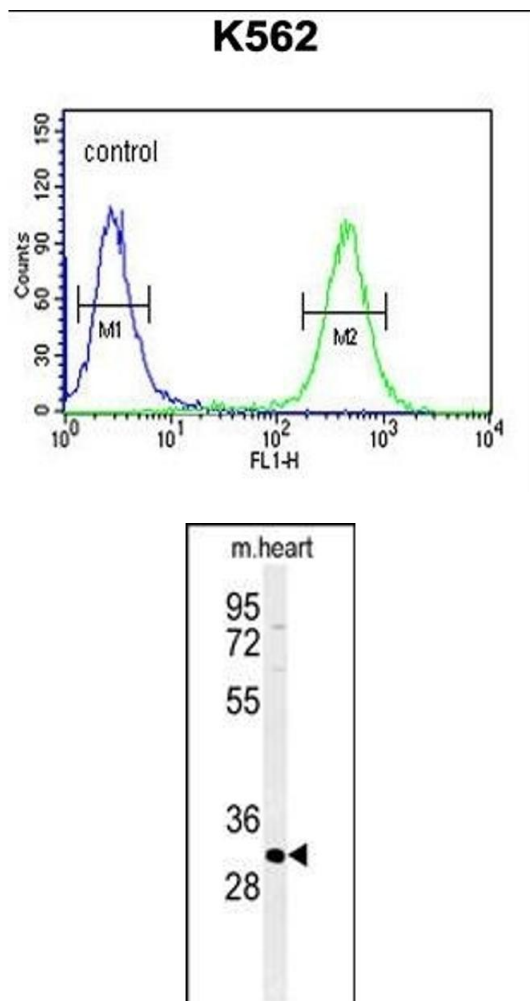
Preservative: Sodium azide

Precaution of Use: This product contains Sodium azide: a POISONOUS AND HAZARDOUS SUBSTANCE which should be handled by trained staff only.

Storage: 4 °C, -20 °C

Storage Comment: Maintain refrigerated at 2-8 °C for up to 6 months. For long term storage store at -20 °C in small aliquots to prevent freeze-thaw cycles.

Expiry Date: 6 months



Flow Cytometry

**Image 1.** ATP4B Antibody (N-term) (ABIN651374 and ABIN2840208) flow cytometric analysis of K562 cells (right histogram) compared to a negative control cell (left histogram).FITC-conjugated goat-anti-rabbit secondary antibodies were used for the analysis.

Western Blotting

**Image 2.** Western blot analysis of ATP4B Antibody (N-term) (ABIN651374 and ABIN2840208) in mouse heart tissue lysates (35 µg/lane).ATP4B (arrow) was detected using the purified Pab.