

Datasheet for ABIN651376
anti-Ataxin 2-Like antibody (C-Term)[Go to Product page](#)

2 Images

Overview

Quantity:	400 µL
Target:	Ataxin 2-Like (ATXN2L)
Binding Specificity:	AA 1021-1048, C-Term
Reactivity:	Human
Host:	Rabbit
Clonality:	Polyclonal
Conjugate:	This Ataxin 2-Like antibody is un-conjugated
Application:	Western Blotting (WB), Flow Cytometry (FACS)

Product Details

Immunogen:	This ATXN2L antibody is generated from rabbits immunized with a KLH conjugated synthetic peptide between 1021-1048 amino acids from the C-terminal region of human ATXN2L.
Clone:	RB26446
Isotype:	Ig Fraction
Purification:	This antibody is purified through a protein A column, followed by peptide affinity purification.

Target Details

Target:	Ataxin 2-Like (ATXN2L)
Alternative Name:	ATXN2L (ATXN2L Products)
Background:	ATXN2L encodes an ataxin type 2 related protein of unknown function. This protein is a

Target Details

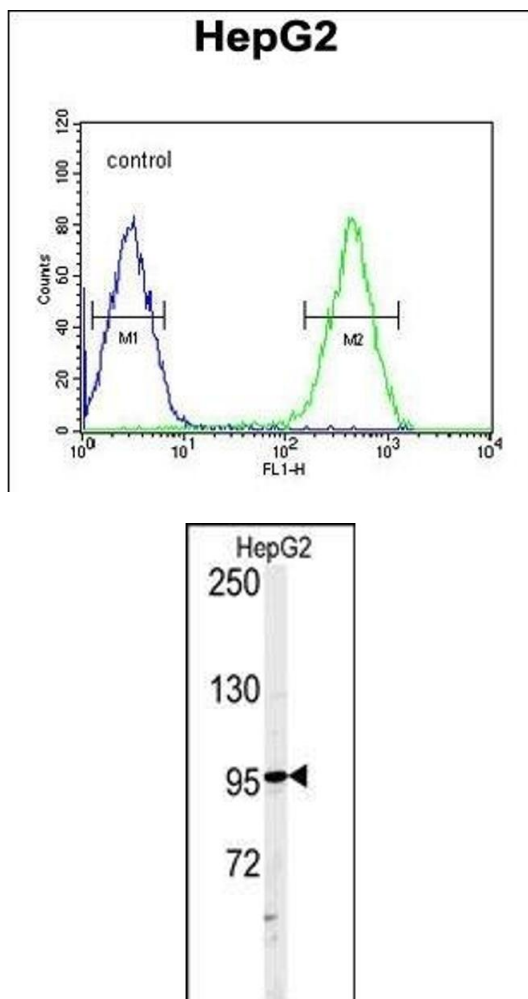
	member of the spinocerebellar ataxia (SCAs) family, which is associated with a complex group of neurodegenerative disorders.
Molecular Weight:	113374
Gene ID:	11273
NCBI Accession:	NP_009176 , NP_059867 , NP_663760 , NP_680780 , NP_680781 , NP_680782
UniProt:	Q8WWM7
Pathways:	Ribonucleoprotein Complex Subunit Organization

Application Details

Application Notes:	WB: 1:1000. FC: 1:10~50
Restrictions:	For Research Use only

Handling

Format:	Liquid
Buffer:	Purified polyclonal antibody supplied in PBS with 0.09 % (W/V) sodium azide.
Preservative:	Sodium azide
Precaution of Use:	This product contains Sodium azide: a POISONOUS AND HAZARDOUS SUBSTANCE which should be handled by trained staff only.
Storage:	4 °C, -20 °C
Storage Comment:	Maintain refrigerated at 2-8 °C for up to 6 months. For long term storage store at -20 °C in small aliquots to prevent freeze-thaw cycles.
Expiry Date:	6 months



Flow Cytometry

Image 1. ATXN2L Antibody (C-term) (ABIN651376 and ABIN2840210) flow cytometric analysis of HepG2 cells (right histogram) compared to a negative control cell (left histogram). FITC-conjugated goat-anti-rabbit secondary antibodies were used for the analysis.

Western Blotting

Image 2. Western blot analysis of ATXN2L Antibody (C-term) (ABIN651376 and ABIN2840210) in HepG2 cell line lysates (35 μ g/lane). ATXN2L (arrow) was detected using the purified Pab.