

Datasheet for ABIN651382
anti-C2orf49 antibody (N-Term)

3 Images

[Go to Product page](#)

Overview

Quantity:	400 µL
Target:	C2orf49
Binding Specificity:	AA 62-90, N-Term
Reactivity:	Human
Host:	Rabbit
Clonality:	Polyclonal
Conjugate:	This C2orf49 antibody is un-conjugated
Application:	Western Blotting (WB), Flow Cytometry (FACS), Immunohistochemistry (Paraffin-embedded Sections) (IHC (p))

Product Details

Immunogen:	This C2orf49 antibody is generated from rabbits immunized with a KLH conjugated synthetic peptide between 62-90 amino acids from the N-terminal region of human C2orf49.
Clone:	RB26338
Isotype:	Ig Fraction
Purification:	This antibody is purified through a protein A column, followed by peptide affinity purification.

Target Details

Target:	C2orf49
Alternative Name:	C2orf49 (C2orf49 Products)

Target Details

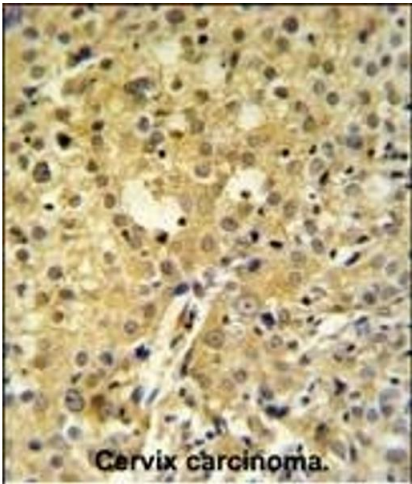
Background:	The function of this protein has not been specifically defined.
Molecular Weight:	25858
Gene ID:	79074
NCBI Accession:	NP_076998
UniProt:	Q9BVC5

Application Details

Application Notes:	WB: 1:1000. IHC-P: 1:50~100. FC: 1:10~50
Restrictions:	For Research Use only

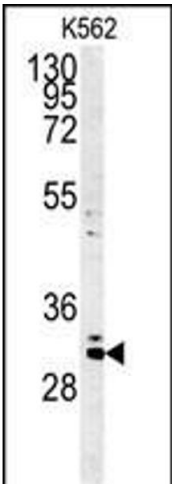
Handling

Format:	Liquid
Buffer:	Purified polyclonal antibody supplied in PBS with 0.09 % (W/V) sodium azide.
Preservative:	Sodium azide
Precaution of Use:	This product contains Sodium azide: a POISONOUS AND HAZARDOUS SUBSTANCE which should be handled by trained staff only.
Storage:	4 °C,-20 °C
Storage Comment:	Maintain refrigerated at 2-8 °C for up to 6 months. For long term storage store at -20 °C in small aliquots to prevent freeze-thaw cycles.
Expiry Date:	6 months



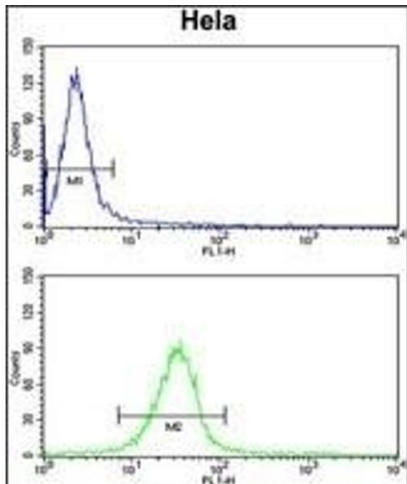
Immunohistochemistry (Paraffin-embedded Sections)

Image 1. C2orf49 Antibody (N-term) (ABIN651382 and ABIN2840213) IHC analysis in formalin fixed and paraffin embedded human cervix carcinoma followed by peroxidase conjugation of the secondary antibody and DAB staining. This data demonstrates the use of the C2orf49 Antibody (N-term) for immunohistochemistry. Clinical relevance has not been evaluated.



Western Blotting

Image 2. Western blot analysis of C2orf49 Antibody (N-term) (ABIN651382 and ABIN2840213) in K562 cell line lysates (35 µg/lane). C2orf49 (arrow) was detected using the purified Pab.



Flow Cytometry

Image 3. C2orf49 Antibody (N-term) (ABIN651382 and ABIN2840213) flow cytometry analysis of HeLa cells (bottom histogram) compared to a negative control cell (top histogram). FITC-conjugated goat-anti-rabbit secondary antibodies were used for the analysis.