

Datasheet for ABIN651399
anti-CMPK2 antibody (AA 142-170)[Go to Product page](#)

3 Images

Overview

Quantity:	400 µL
Target:	CMPK2
Binding Specificity:	AA 142-170
Reactivity:	Human
Host:	Rabbit
Clonality:	Polyclonal
Conjugate:	This CMPK2 antibody is un-conjugated
Application:	Western Blotting (WB), Flow Cytometry (FACS), Immunohistochemistry (Paraffin-embedded Sections) (IHC (p))

Product Details

Immunogen:	This CMPK2 antibody is generated from rabbits immunized with a KLH conjugated synthetic peptide between 142-170 amino acids from the Central region of human CMPK2.
Clone:	RB26588
Isotype:	Ig Fraction
Purification:	This antibody is purified through a protein A column, followed by peptide affinity purification.

Target Details

Target:	CMPK2
Alternative Name:	CMPK2 (CMPK2 Products)

Target Details

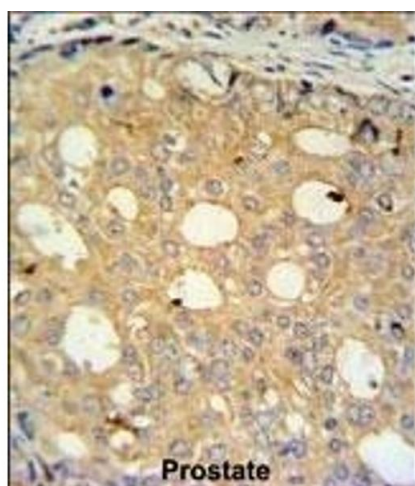
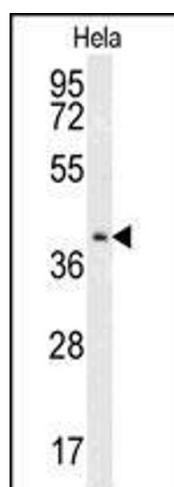
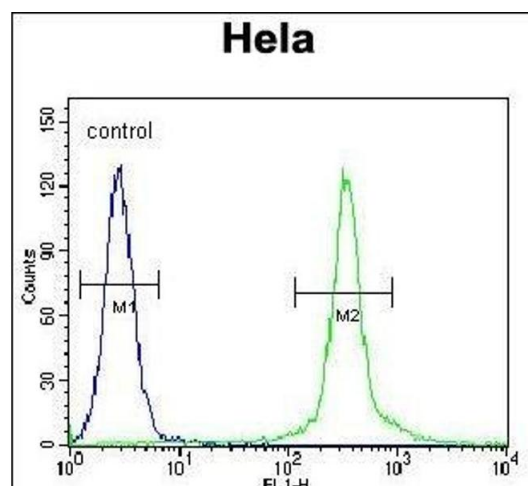
Background:	Mitochondrial UMP-CMP kinase (EC 2.7.2.14) is a component of the salvage pathway for nucleotide synthesis. Other enzymes of the salvage pathway include thymidine kinase-2 (TK2, MIM 188250), deoxynucleotidase-2 (NT5M, MIM 605292), deoxyguanosine kinase (DGUOK, MIM 601465), adenylate kinase-2 (AK2, MIM 103020), adenylate kinase-3 (AK3, MIM 609290), adenylate kinase-3-like-1 (AK3L1, MIM 103030), and nucleoside diphosphate kinase.
Molecular Weight:	49448
Gene ID:	129607
NCBI Accession:	NP_001243406 , NP_001243407 , NP_997198
UniProt:	Q5EBM0
Pathways:	Nucleotide Phosphorylation , Cellular Response to Molecule of Bacterial Origin

Application Details

Application Notes:	WB: 1:1000. IHC-P: 1:50~100. FC: 1:10~50
Restrictions:	For Research Use only

Handling

Format:	Liquid
Buffer:	Purified polyclonal antibody supplied in PBS with 0.09 % (W/V) sodium azide.
Preservative:	Sodium azide
Precaution of Use:	This product contains Sodium azide: a POISONOUS AND HAZARDOUS SUBSTANCE which should be handled by trained staff only.
Storage:	4 °C, -20 °C
Storage Comment:	Maintain refrigerated at 2-8 °C for up to 6 months. For long term storage store at -20 °C in small aliquots to prevent freeze-thaw cycles.
Expiry Date:	6 months



Flow Cytometry

Image 1. CK2 Antibody (Center) (ABIN651399 and ABIN2840216) flow cytometric analysis of HeLa cells (right histogram) coated to a negative control cell (left histogram). FITC-conjugated goat-anti-rabbit secondary antibodies were used for the analysis.

Western Blotting

Image 2. Western blot analysis of CK2 Antibody (Center) (ABIN651399 and ABIN2840216) in HeLa cell line lysates (35 µg/lane). CK2 (arrow) was detected using the purified Pab.

Immunohistochemistry (Paraffin-embedded Sections)

Image 3. CK2 Antibody (Center) (ABIN651399 and ABIN2840216) IHC analysis in formalin fixed and paraffin embedded human prostate carcinoma followed by peroxidase conjugation of the secondary antibody and DAB staining. This data demonstrates the use of the CK2 Antibody (Center) for immunohistochemistry. Clinical relevance has not been evaluated.