



[Go to Product page](#)

Datasheet for ABIN651404

anti-C21ORF56 antibody (C-Term)

1 Image

Overview

Quantity:	400 µL
Target:	C21ORF56 (C21orf56)
Binding Specificity:	AA 226-254, C-Term
Reactivity:	Human
Host:	Rabbit
Clonality:	Polyclonal
Conjugate:	This C21ORF56 antibody is un-conjugated
Application:	Western Blotting (WB)

Product Details

Immunogen:	This CU056 antibody is generated from rabbits immunized with a KLH conjugated synthetic peptide between 226-254 amino acids from the C-terminal region of human CU056.
Clone:	RB26071
Isotype:	Ig Fraction
Purification:	This antibody is purified through a protein A column, followed by peptide affinity purification.

Target Details

Target:	C21ORF56 (C21orf56)
Alternative Name:	CU056 (C21orf56 Products)
Background:	The function of this protein has not been specifically defined.

Target Details

Molecular Weight:	37613
Gene ID:	84221
NCBI Accession:	NP_001136326, NP_115637
UniProt:	Q9H0A9

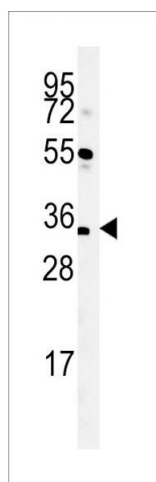
Application Details

Application Notes:	WB: 1:1000
Restrictions:	For Research Use only

Handling

Format:	Liquid
Buffer:	Purified polyclonal antibody supplied in PBS with 0.09 % (W/V) sodium azide.
Preservative:	Sodium azide
Precaution of Use:	This product contains Sodium azide: a POISONOUS AND HAZARDOUS SUBSTANCE which should be handled by trained staff only.
Storage:	4 °C, -20 °C
Storage Comment:	Maintain refrigerated at 2-8 °C for up to 6 months. For long term storage store at -20 °C in small aliquots to prevent freeze-thaw cycles.
Expiry Date:	6 months

Images



Western Blotting

Image 1. Western blot analysis of C Antibody (C-term) (ABIN651404 and ABIN2840219) in mouse liver tissue lysates (35 µg/lane). C (arrow) was detected using the purified Pab.