

Datasheet for ABIN651409
anti-ENPP6 antibody (AA 170-197)

2 Images

[Go to Product page](#)

Overview

Quantity:	400 µL
Target:	ENPP6
Binding Specificity:	AA 170-197
Reactivity:	Human, Mouse
Host:	Rabbit
Clonality:	Polyclonal
Conjugate:	This ENPP6 antibody is un-conjugated
Application:	Western Blotting (WB), Immunohistochemistry (Paraffin-embedded Sections) (IHC (p))

Product Details

Immunogen:	This ENPP6 antibody is generated from rabbits immunized with a KLH conjugated synthetic peptide between 170-197 amino acids from the Central region of human ENPP6.
Clone:	RB25818
Isotype:	Ig Fraction
Predicted Reactivity:	Pig, Rat
Purification:	This antibody is purified through a protein A column, followed by peptide affinity purification.

Target Details

Target:	ENPP6
Alternative Name:	ENPP6 (ENPP6 Products)

Target Details

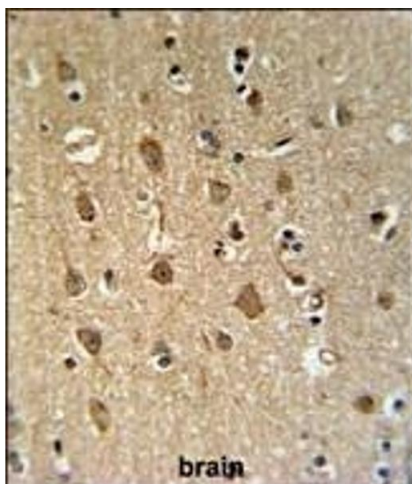
Background:	ENPP6 is choline-specific glycerophosphodiester phosphodiesterase. This protein hydrolyzes the classical substrate for phospholipase C, p-nitrophenyl phosphorylcholine, while it does not hydrolyze the classical nucleotide phosphodiesterase substrate, p-nitrophenyl thymidine 5'-monophosphate.
Molecular Weight:	50241
Gene ID:	133121
NCBI Accession:	NP_699174
UniProt:	Q6UWR7

Application Details

Application Notes:	WB: 1:1000. IHC-P: 1:50~100
Restrictions:	For Research Use only

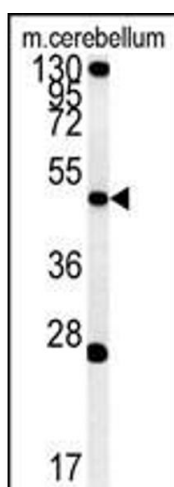
Handling

Format:	Liquid
Buffer:	Purified polyclonal antibody supplied in PBS with 0.09 % (W/V) sodium azide.
Preservative:	Sodium azide
Precaution of Use:	This product contains Sodium azide: a POISONOUS AND HAZARDOUS SUBSTANCE which should be handled by trained staff only.
Storage:	4 °C,-20 °C
Storage Comment:	Maintain refrigerated at 2-8 °C for up to 6 months. For long term storage store at -20 °C in small aliquots to prevent freeze-thaw cycles.
Expiry Date:	6 months



Immunohistochemistry (Paraffin-embedded Sections)

Image 1. EN Antibody (Center) (ABIN651409 and ABIN2840220) IHC analysis in formalin fixed and paraffin embedded human brain tissue followed by peroxidase conjugation of the secondary antibody and DAB staining. This data demonstrates the use of the EN Antibody (Center) for immunohistochemistry. Clinical relevance has not been evaluated.



Western Blotting

Image 2. Western blot analysis of EN Antibody (Center) (ABIN651409 and ABIN2840220) in mouse cerebellum tissue lysates (35 µg/lane). EN (arrow) was detected using the purified Pab.