

Datasheet for ABIN651411
anti-ERO1LB antibody (C-Term)

3 Images

[Go to Product page](#)

Overview

Quantity:	400 µL
Target:	ERO1LB
Binding Specificity:	AA 266-293, C-Term
Reactivity:	Human, Mouse
Host:	Rabbit
Clonality:	Polyclonal
Conjugate:	This ERO1LB antibody is un-conjugated
Application:	Western Blotting (WB), Flow Cytometry (FACS), Immunohistochemistry (Paraffin-embedded Sections) (IHC (p))

Product Details

Immunogen:	This ERO1LB antibody is generated from rabbits immunized with a KLH conjugated synthetic peptide between 266-293 amino acids from the C-terminal region of human ERO1LB.
Clone:	RB26449
Isotype:	Ig Fraction
Purification:	This antibody is purified through a protein A column, followed by peptide affinity purification.

Target Details

Target:	ERO1LB
Alternative Name:	ERO1LB (ERO1LB Products)

Target Details

Background: ERO1LB is essential oxidoreductase that oxidizes proteins in the endoplasmic reticulum to produce disulfide bonds. ERO1LB acts by oxidizing directly P4HB/PDI isomerase through a direct disulfide exchange. ERO1LB does not act as a direct oxidant of folding substrate, but relies on P4HB/PDI to transfer oxidizing equivalent.

Molecular Weight: 53543

Gene ID: 56605

NCBI Accession: [NP_063944](#)

UniProt: [Q86YB8](#)

Pathways: [SARS-CoV-2 Protein Interactome](#)

Application Details

Application Notes: WB: 1:1000. IHC-P: 1:50~100. FC: 1:10~50

Restrictions: For Research Use only

Handling

Format: Liquid

Buffer: Purified polyclonal antibody supplied in PBS with 0.09 % (W/V) sodium azide.

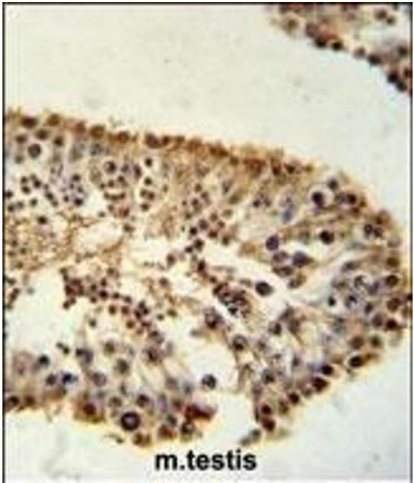
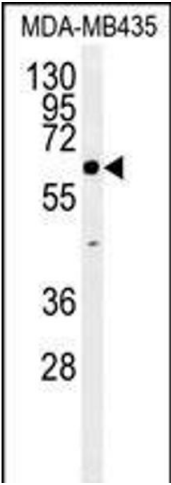
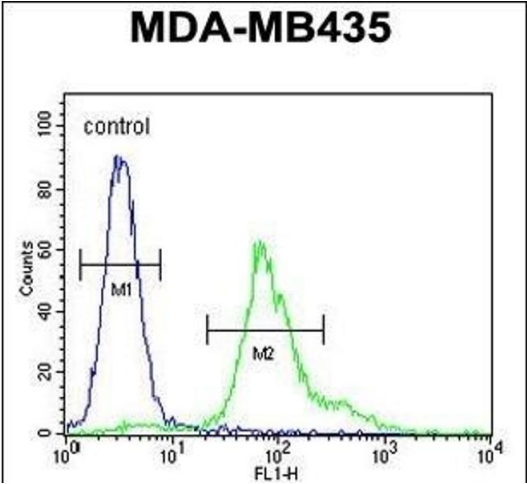
Preservative: Sodium azide

Precaution of Use: This product contains Sodium azide: a POISONOUS AND HAZARDOUS SUBSTANCE which should be handled by trained staff only.

Storage: 4 °C,-20 °C

Storage Comment: Maintain refrigerated at 2-8 °C for up to 6 months. For long term storage store at -20 °C in small aliquots to prevent freeze-thaw cycles.

Expiry Date: 6 months



Flow Cytometry

Image 1. ERO1LB Antibody (C-term) (ABIN651411 and ABIN2840222) flow cytometric analysis of MDA-M cells (right histogram) compared to a negative control cell (left histogram). FITC-conjugated goat-anti-rabbit secondary antibodies were used for the analysis.

Western Blotting

Image 2. ERO1LB Antibody (C-term) (ABIN651411 and ABIN2840222) western blot analysis in MDA-M cell line lysates (35 µg/lane). This demonstrates the ERO1LB antibody detected the ERO1LB protein (arrow).

Immunohistochemistry (Paraffin-embedded Sections)

Image 3. ERO1LB Antibody (C-term) (ABIN651411 and ABIN2840222) immunohistochemistry analysis in formalin fixed and paraffin embedded mouse testis tissue followed by peroxidase conjugation of the secondary antibody and DAB staining. This data demonstrates the use of the ERO1LB Antibody (C-term) for immunohistochemistry. Clinical relevance has not been evaluated.