

Datasheet for ABIN651417  
**anti-G6PC antibody (AA 123-149)**[Go to Product page](#)

## 4 Images

## Overview

Quantity:	400 µL
Target:	G6PC
Binding Specificity:	AA 123-149
Reactivity:	Human
Host:	Rabbit
Clonality:	Polyclonal
Conjugate:	This G6PC antibody is un-conjugated
Application:	Western Blotting (WB), Flow Cytometry (FACS), Immunohistochemistry (Paraffin-embedded Sections) (IHC (p))

## Product Details

Immunogen:	This G6PC antibody is generated from rabbits immunized with a KLH conjugated synthetic peptide between 123-149 amino acids from the Central region of human G6PC.
Clone:	RB30027
Isotype:	Ig Fraction
Purification:	This antibody is purified through a protein A column, followed by peptide affinity purification.

## Target Details

Target:	G6PC
Alternative Name:	G6PC ( <a href="#">G6PC Products</a> )

## Target Details

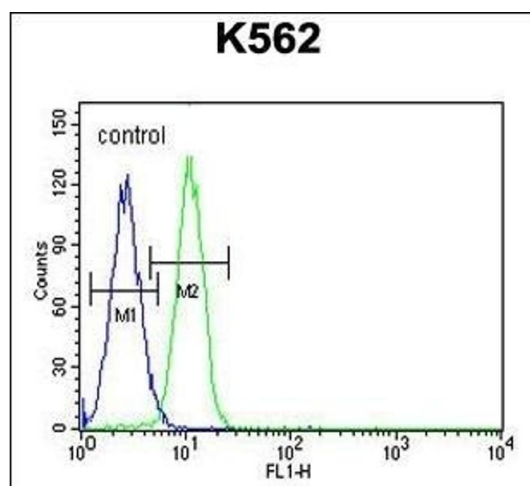
Background:	Glucose-6-phosphatase is an integral membrane protein of the endoplasmic reticulum that catalyzes the hydrolysis of D-glucose 6-phosphate to D-glucose and orthophosphate. It is a key enzyme in glucose homeostasis, functioning in gluconeogenesis and glycogenolysis. Defects in the enzyme cause glycogen storage disease type I.
Molecular Weight:	40484
Gene ID:	2538
NCBI Accession:	<a href="#">NP_000142</a> , <a href="#">NP_001257326</a>
UniProt:	<a href="#">P35575</a>
Pathways:	<a href="#">Carbohydrate Homeostasis</a> , <a href="#">Cellular Glucan Metabolic Process</a>

## Application Details

Application Notes:	WB: 1:1000. WB: 1:1000. IHC-P: 1:50~100. FC: 1:10~50
Restrictions:	For Research Use only

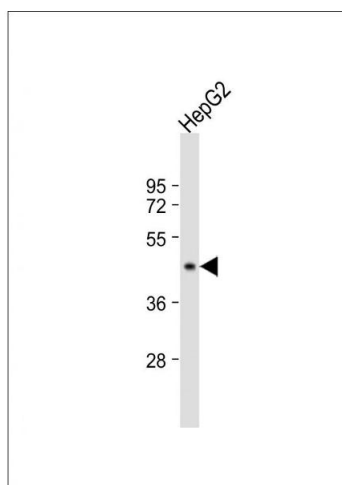
## Handling

Format:	Liquid
Buffer:	Purified polyclonal antibody supplied in PBS with 0.09 % (W/V) sodium azide.
Preservative:	Sodium azide
Precaution of Use:	This product contains Sodium azide: a POISONOUS AND HAZARDOUS SUBSTANCE which should be handled by trained staff only.
Storage:	4 °C,-20 °C
Storage Comment:	Maintain refrigerated at 2-8 °C for up to 6 months. For long term storage store at -20 °C in small aliquots to prevent freeze-thaw cycles.
Expiry Date:	6 months



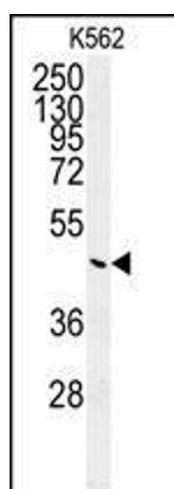
### Flow Cytometry

**Image 1.** G6PC Antibody (Center) (ABIN651417 and ABIN2840227) flow cytometric analysis of K562 cells (right histogram) compared to a negative control cell (left histogram). FITC-conjugated goat-anti-rabbit secondary antibodies were used for the analysis.



### Western Blotting

**Image 2.** Anti-G6PC Antibody (Center) at 1:1000 dilution + HepG2 whole cell lysate Lysates/proteins at 20 µg per lane. Secondary Goat Anti-Rabbit IgG, (H+L), Peroxidase conjugated at 1/10000 dilution. Predicted band size : 40 kDa Blocking/Dilution buffer: 5 % NFDM/TBST.



### Western Blotting

**Image 3.** Western blot analysis of G6PC Antibody (Center) (ABIN651417 and ABIN2840227) in K562 cell line lysates (35 µg/lane). G6PC (arrow) was detected using the purified Pab.

Please check the [product details page](#) for more images. Overall 4 images are available for ABIN651417.