

Datasheet for ABIN651425  
**anti-Homeobox C6 antibody (C-Term)**



[Go to Product page](#)

2 Images

## Overview

Quantity:	400 µL
Target:	Homeobox C6 (HOXC6)
Binding Specificity:	AA 200-227, C-Term
Reactivity:	Human
Host:	Rabbit
Clonality:	Polyclonal
Conjugate:	This Homeobox C6 antibody is un-conjugated
Application:	Western Blotting (WB), Flow Cytometry (FACS)

## Product Details

Immunogen:	This HOXC6 antibody is generated from rabbits immunized with a KLH conjugated synthetic peptide between 200-227 amino acids from the C-terminal region of human HOXC6.
Clone:	RB24053
Isotype:	Ig Fraction
Predicted Reactivity:	M, Sh
Purification:	This antibody is purified through a protein A column, followed by peptide affinity purification.

## Target Details

Target:	Homeobox C6 (HOXC6)
Alternative Name:	HOXC6 ( <a href="#">HOXC6 Products</a> )

## Target Details

---

**Background:** This protein belongs to the homeobox family, members of which encode a highly conserved family of transcription factors that play an important role in morphogenesis in all multicellular organisms. Mammals possess four similar homeobox gene clusters, HOXA, HOXB, HOXC and HOXD, which are located on different chromosomes and consist of 9 to 11 genes arranged in tandem. This gene, HOXC6, is one of several HOXC genes located in a cluster on chromosome 12. Three genes, HOXC5, HOXC4 and HOXC6, share a 5' non-coding exon.

**Molecular Weight:** 26915

**Gene ID:** 3223

**NCBI Accession:** [NP\\_004494](#), [NP\\_710160](#)

**UniProt:** [P09630](#)

## Application Details

---

**Application Notes:** WB: 1:1000. FC: 1:10~50

**Restrictions:** For Research Use only

## Handling

---

**Format:** Liquid

**Buffer:** Purified polyclonal antibody supplied in PBS with 0.09 % (W/V) sodium azide.

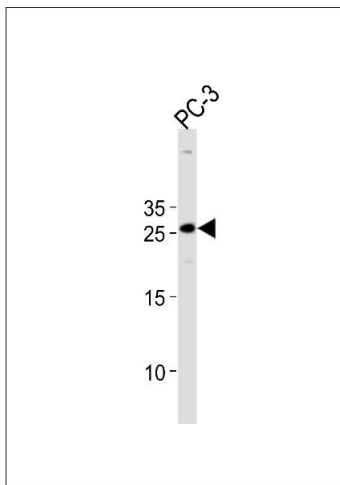
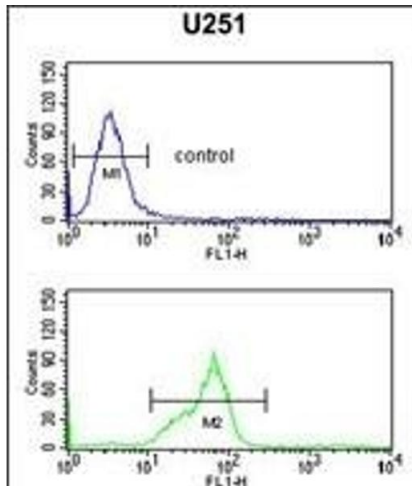
**Preservative:** Sodium azide

**Precaution of Use:** This product contains Sodium azide: a POISONOUS AND HAZARDOUS SUBSTANCE which should be handled by trained staff only.

**Storage:** 4 °C, -20 °C

**Storage Comment:** Maintain refrigerated at 2-8 °C for up to 6 months. For long term storage store at -20 °C in small aliquots to prevent freeze-thaw cycles.

**Expiry Date:** 6 months



### Flow Cytometry

**Image 1.** HOXC6 Antibody (C-term) (ABIN651425 and ABIN2840232) flow cytometric analysis of cells (bottom histogram) compared to a negative control cell (top histogram). FITC-conjugated goat-anti-rabbit secondary antibodies were used for the analysis.

### Western Blotting

**Image 2.** HOXC6 Antibody (C-term) (ABIN651425 and ABIN2840232) western blot analysis in PC-3 cell line lysates (35 µg/lane). This demonstrates the HOXC6 antibody detected the HOXC6 protein (arrow).