

Datasheet for ABIN651427
anti-IL36A/IL1F6 antibody (AA 35-61)

3 Images

[Go to Product page](#)

Overview

Quantity:	400 µL
Target:	IL36A/IL1F6 (IL1F6)
Binding Specificity:	AA 35-61
Reactivity:	Human
Host:	Rabbit
Clonality:	Polyclonal
Conjugate:	This IL36A/IL1F6 antibody is un-conjugated
Application:	Western Blotting (WB), Flow Cytometry (FACS), Immunohistochemistry (Paraffin-embedded Sections) (IHC (p))

Product Details

Immunogen:	This IL1F6 antibody is generated from rabbits immunized with a KLH conjugated synthetic peptide between 35-61 amino acids from the Central region of human IL1F6.
Clone:	RB25982
Isotype:	Ig Fraction
Purification:	This antibody is purified through a protein A column, followed by peptide affinity purification.

Target Details

Target:	IL36A/IL1F6 (IL1F6)
Alternative Name:	IL1F6 (IL1F6 Products)

Target Details

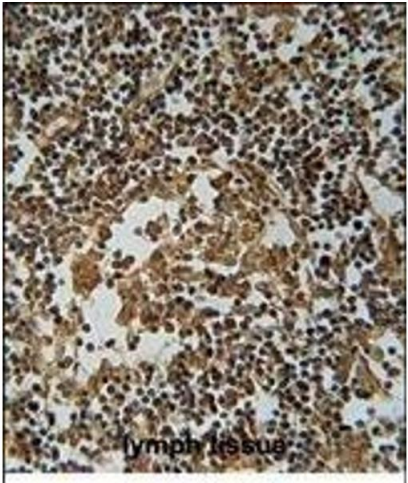
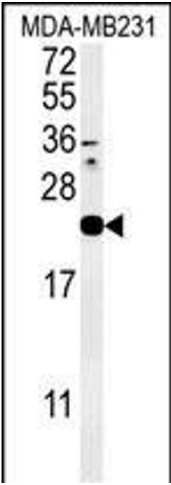
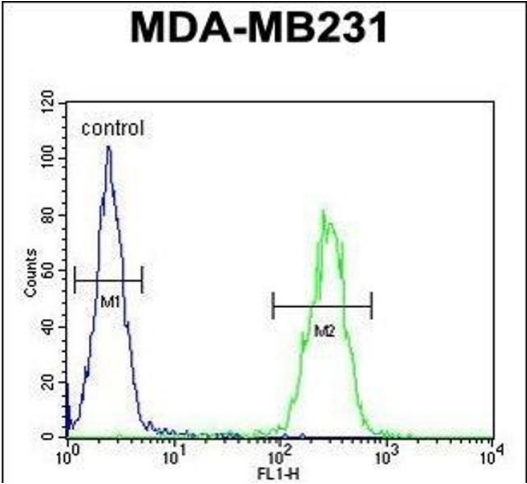
Background:	The function of this protein has not been specifically defined.
Molecular Weight:	17684
Gene ID:	27179
NCBI Accession:	NP_055255
UniProt:	Q9UHA7
Pathways:	Cancer Immune Checkpoints

Application Details

Application Notes:	WB: 1:1000. IHC-P: 1:50~100. FC: 1:10~50
Restrictions:	For Research Use only

Handling

Format:	Liquid
Buffer:	Purified polyclonal antibody supplied in PBS with 0.09 % (W/V) sodium azide.
Preservative:	Sodium azide
Precaution of Use:	This product contains Sodium azide: a POISONOUS AND HAZARDOUS SUBSTANCE which should be handled by trained staff only.
Storage:	4 °C,-20 °C
Storage Comment:	Maintain refrigerated at 2-8 °C for up to 6 months. For long term storage store at -20 °C in small aliquots to prevent freeze-thaw cycles.
Expiry Date:	6 months



Flow Cytometry

Image 1. IL1F6 Antibody (Center) (ABIN651427 and ABIN2840233) flow cytometric analysis of MDA-M cells (right histogram) compared to a negative control cell (left histogram). FITC-conjugated goat-anti-rabbit secondary antibodies were used for the analysis.

Western Blotting

Image 2. Western blot analysis of IL1F6 Antibody (Center) (ABIN651427 and ABIN2840233) in MDA-M cell line lysates (35 µg/lane). IL1F6 (arrow) was detected using the purified Pab.

Immunohistochemistry (Paraffin-embedded Sections)

Image 3. IL1F6 Antibody (Center) (ABIN651427 and ABIN2840233) immunohistochemistry analysis in formalin fixed and paraffin embedded human lymph tissue followed by peroxidase conjugation of the secondary antibody and DAB staining. This data demonstrates the use of the IL1F6 Antibody (Center) for immunohistochemistry. Clinical relevance has not been evaluated.