

Datasheet for ABIN651433  
**anti-L1TD1 antibody (C-Term)**



[Go to Product page](#)

2 Images

Overview

Quantity:	400 µL
Target:	L1TD1
Binding Specificity:	AA 817-848, C-Term
Reactivity:	Human
Host:	Rabbit
Clonality:	Polyclonal
Conjugate:	This L1TD1 antibody is un-conjugated
Application:	Western Blotting (WB), Immunohistochemistry (Paraffin-embedded Sections) (IHC (p))

Product Details

Immunogen:	This L1TD1 antibody is generated from rabbits immunized with a KLH conjugated synthetic peptide between 817-848 amino acids from the C-terminal region of human L1TD1.
Clone:	RB15070
Isotype:	Ig Fraction
Purification:	This antibody is prepared by Saturated Ammonium Sulfate (SAS) precipitation followed by dialysis against PBS.

Target Details

Target:	L1TD1
Alternative Name:	L1TD1 ( <a href="#">L1TD1 Products</a> )

## Target Details

---

Background:	L1TD1 is a member of the keratin gene family. As a type I hair keratin, it is an acidic protein which heterodimerizes with type II keratins to form hair and nails. The type I hair keratins are clustered in a region of chromosome 17q12-q21 and have the same direction of transcription.
Molecular Weight:	98850
Gene ID:	54596
NCBI Accession:	<a href="#">NP_001158307</a> , <a href="#">NP_061952</a>
UniProt:	<a href="#">Q5T7N2</a>

## Application Details

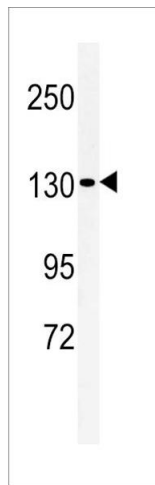
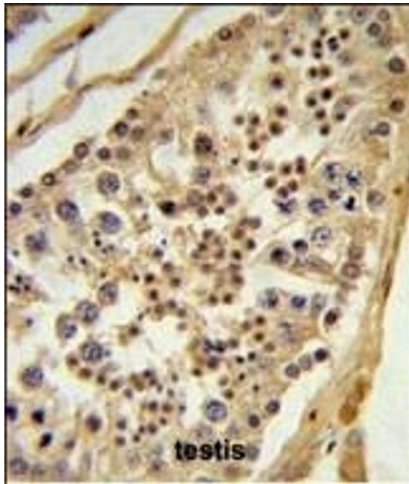
---

Application Notes:	WB: 1:1000. IHC-P: 1:50~100
Restrictions:	For Research Use only

## Handling

---

Format:	Liquid
Buffer:	Purified polyclonal antibody supplied in PBS with 0.09 % (W/V) sodium azide.
Preservative:	Sodium azide
Precaution of Use:	This product contains Sodium azide: a POISONOUS AND HAZARDOUS SUBSTANCE which should be handled by trained staff only.
Storage:	4 °C, -20 °C
Storage Comment:	Maintain refrigerated at 2-8 °C for up to 6 months. For long term storage store at -20 °C in small aliquots to prevent freeze-thaw cycles.
Expiry Date:	6 months



### Immunohistochemistry (Paraffin-embedded Sections)

**Image 1.** L1TD1 Antibody (C-term) (ABIN651433 and ABIN2840237) IHC analysis in formalin fixed and paraffin embedded testis tissue followed by peroxidase conjugation of the secondary antibody and DAB staining. This data demonstrates the use of the L1TD1 Antibody (C-term) for immunohistochemistry. Clinical relevance has not been evaluated.

### Western Blotting

**Image 2.** Western blot analysis of L1TD1 Antibody (C-term) (ABIN651433 and ABIN2840237) in HeLa cell line lysates (35 µg/lane). L1TD1 (arrow) was detected using the purified Pab.