

Datasheet for ABIN651434
anti-IL-4 antibody (C-Term)[Go to Product page](#)

3 Images

2 Publications

Overview

Quantity:	400 µL
Target:	IL-4 (IL4)
Binding Specificity:	AA 122-150, AA 122-151, C-Term
Reactivity:	Human, Mouse
Host:	Rabbit
Clonality:	Polyclonal
Conjugate:	This IL-4 antibody is un-conjugated
Application:	Western Blotting (WB), Flow Cytometry (FACS), Immunohistochemistry (Paraffin-embedded Sections) (IHC (p))

Product Details

Immunogen:	This L4 antibody is generated from rabbits immunized with a KLH conjugated synthetic peptide between 122-150 amino acids from the C-terminal region of human L4.
Clone:	RB22885
Isotype:	Ig Fraction
Predicted Reactivity:	Pr, Sh
Purification:	This antibody is purified through a protein A column, followed by peptide affinity purification.

Target Details

Target:	IL-4 (IL4)
---------	------------

Target Details

Alternative Name:	IL4 (IL4 Products)
Background:	IL4 is a pleiotropic cytokine produced by activated T cells. This cytokine is a ligand for interleukin 4 receptor. The interleukin 4 receptor also binds to IL13, which may contribute to many overlapping functions of this cytokine and IL13. STAT6, a signal transducer and activator of transcription, has been shown to play a central role in mediating the immune regulatory signal of this cytokine. This gene, IL3, IL5, IL13, and CSF2 form a cytokine gene cluster on chromosome 5q, with this gene particularly close to IL13. This gene, IL13 and IL5 are found to be regulated coordinately by several long-range regulatory elements in an over 120 kilobase range on the chromosome.
Molecular Weight:	17492
Gene ID:	3565
NCBI Accession:	NP_000580 , NP_758858
UniProt:	P05112
Pathways:	JAK-STAT Signaling , Regulation of Leukocyte Mediated Immunity , Positive Regulation of Immune Effector Process , Production of Molecular Mediator of Immune Response , Proton Transport , Activated T Cell Proliferation

Application Details

Application Notes:	WB: 1:1000. IHC-P: 1:10~50. FC: 1:10~50
Restrictions:	For Research Use only

Handling

Format:	Liquid
Buffer:	Purified polyclonal antibody supplied in PBS with 0.09 % (W/V) sodium azide.
Preservative:	Sodium azide
Precaution of Use:	This product contains Sodium azide: a POISONOUS AND HAZARDOUS SUBSTANCE which should be handled by trained staff only.
Storage:	4 °C, -20 °C
Storage Comment:	Maintain refrigerated at 2-8 °C for up to 6 months. For long term storage store at -20 °C in small aliquots to prevent freeze-thaw cycles.

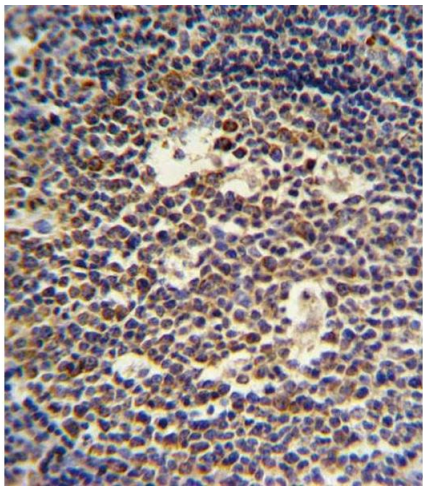
Expiry Date: 6 months

Publications

Product cited in: Zhang, Song, Wang, Wang, Zeng, Zhai, Ma, Li, Liao, Wang, Zhen, Wang, Cao, Lin, Ning, Liu: " Nasal IL-4(+)CXCR5(+)CD4(+) T follicular helper cell counts correlate with local IgE production in eosinophilic nasal polyps." in: **The Journal of allergy and clinical immunology**, Vol. 137, Issue 2, pp. 462-73, (2016) ([PubMed](#)).

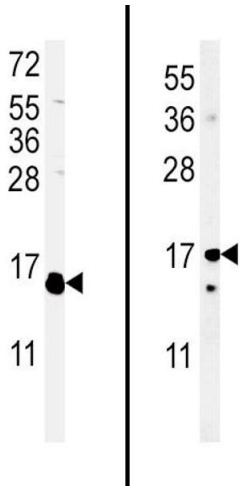
Zhong, Zhou, Wu, Guo, Tan, Zhang, Zhang, Geng, Pan, Luo, Zhang, Xu, Liu, Liu, Gao, Liu, Ren, Li, Zhou, Zhang: "A SnoRNA-derived piRNA interacts with human interleukin-4 pre-mRNA and induces its decay in nuclear exosomes." in: **Nucleic acids research**, Vol. 43, Issue 21, pp. 10474-91, (2015) ([PubMed](#)).

Images



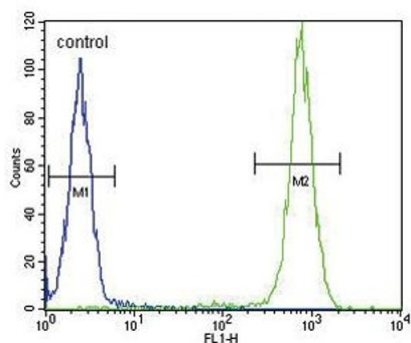
Immunohistochemistry (Paraffin-embedded Sections)

Image 1. IL4 Antibody (C-term) (ABIN651434 and ABIN2840238) IHC analysis in formalin fixed and paraffin embedded tonsil followed by peroxidase conjugation of the secondary antibody and DAB staining. This data demonstrates the use of the IL4 Antibody (C-term) for immunohistochemistry. Clinical relevance has not been evaluated.



Western Blotting

Image 2. (LEFT)Western blot analysis of IL4 Antibody (C-term) (ABIN651434 and ABIN2840238) in WiDr cell line lysates (35 µg/lane).IL4 (arrow) was detected using the purified Pab.(RIGHT)Western blot analysis of IL4 Antibody (C-term) (ABIN651434 and ABIN2840238) in mouse cerebellum cell line lysates (35 µg/lane).IL4(arrow) was detected using the purified Pab.



Flow Cytometry

Image 3. IL4 Antibody (C-term) (ABIN651434 and ABIN2840238) flow cytometric analysis of WiDr cells (right histogram) compared to a negative control cell (left histogram). FITC-conjugated goat-anti-rabbit secondary antibodies were used for the analysis.