

Datasheet for ABIN651438
anti-MFSD3 antibody (AA 174-202)[Go to Product page](#)

2 Images

Overview

| | |
|----------------------|--|
| Quantity: | 400 µL |
| Target: | MFSD3 |
| Binding Specificity: | AA 174-202 |
| Reactivity: | Human |
| Host: | Rabbit |
| Clonality: | Polyclonal |
| Conjugate: | This MFSD3 antibody is un-conjugated |
| Application: | Western Blotting (WB), Immunohistochemistry (Paraffin-embedded Sections) (IHC (p)) |

Product Details

| | |
|---------------|---|
| Immunogen: | This MFSD3 antibody is generated from rabbits immunized with a KLH conjugated synthetic peptide between 174-202 amino acids from the Central region of human MFSD3. |
| Clone: | RB26587 |
| Isotype: | Ig Fraction |
| Purification: | This antibody is purified through a protein A column, followed by peptide affinity purification. |

Target Details

| | |
|-------------------|---|
| Target: | MFSD3 |
| Alternative Name: | MFSD3 (MFSD3 Products) |
| Background: | The function of this protein has not been specifically defined. |

Target Details

| | |
|-------------------|---------------------------|
| Molecular Weight: | 42696 |
| Gene ID: | 113655 |
| NCBI Accession: | NP_612440 |
| UniProt: | Q96ES6 |

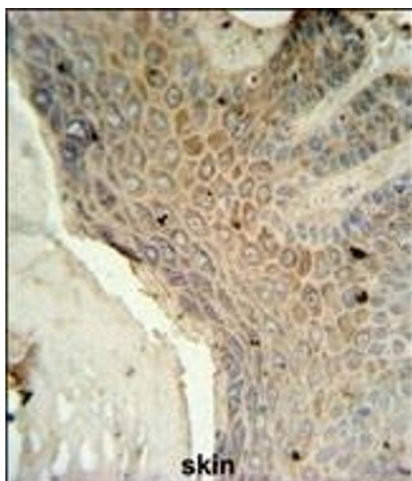
Application Details

| | |
|--------------------|-----------------------------|
| Application Notes: | WB: 1:1000. IHC-P: 1:50~100 |
| Restrictions: | For Research Use only |

Handling

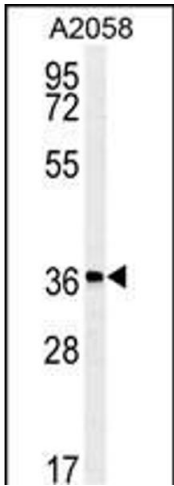
| | |
|--------------------|--|
| Format: | Liquid |
| Buffer: | Purified polyclonal antibody supplied in PBS with 0.09 % (W/V) sodium azide. |
| Preservative: | Sodium azide |
| Precaution of Use: | This product contains Sodium azide: a POISONOUS AND HAZARDOUS SUBSTANCE which should be handled by trained staff only. |
| Storage: | 4 °C, -20 °C |
| Storage Comment: | Maintain refrigerated at 2-8 °C for up to 6 months. For long term storage store at -20 °C in small aliquots to prevent freeze-thaw cycles. |
| Expiry Date: | 6 months |

Images



Immunohistochemistry (Paraffin-embedded Sections)

Image 1. MFSD3 Antibody (Center) (ABIN651438 and ABIN2840241) IHC analysis in formalin fixed and paraffin embedded human skin tissue followed by peroxidase conjugation of the secondary antibody and DAB staining. This data demonstrates the use of the MFSD3 Antibody (Center) for immunohistochemistry. Clinical relevance has not been evaluated.



Western Blotting

Image 2. Western blot analysis of MFSD3 Antibody (Center) (ABIN651438 and ABIN2840241) in cell line lysates (35 μg/lane).MFSD3 (arrow) was detected using the purified Pab.