



[Go to Product page](#)

Datasheet for ABIN651444

anti-Neuropeptide FF antibody (C-Term)

2 Images

Overview

Quantity:	400 µL
Target:	Neuropeptide FF (NPFF)
Binding Specificity:	AA 86-113, C-Term
Reactivity:	Human
Host:	Rabbit
Clonality:	Polyclonal
Conjugate:	This Neuropeptide FF antibody is un-conjugated
Application:	Western Blotting (WB), Flow Cytometry (FACS)

Product Details

Immunogen:	This NPFF antibody is generated from rabbits immunized with a KLH conjugated synthetic peptide between 86-113 amino acids from the C-terminal region of human NPFF.
Clone:	RB25886
Isotype:	IgG
Predicted Reactivity:	B, M, Rat
Purification:	This antibody is purified through a protein A column, followed by peptide affinity purification.

Target Details

Target:	Neuropeptide FF (NPFF)
Alternative Name:	NPFF (NPFF Products)

Target Details

Background: FMFRamide-related protein precursor plays a role in the regulation of heart rate and blood pressure and the modulation of morphine-induced antinociception. FMRFAL encodes a preproprotein which is cleaved to form two active peptides with similar function.

Molecular Weight: 12440

Gene ID: 8620

NCBI Accession: [NP_003708](#)

UniProt: [O15130](#)

Application Details

Application Notes: WB: 1:1000. FC: 1:10~50

Restrictions: For Research Use only

Handling

Format: Liquid

Buffer: Purified polyclonal antibody supplied in PBS with 0.09 % (W/V) sodium azide.

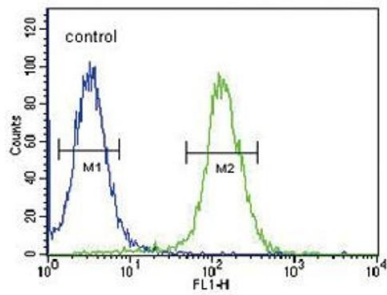
Preservative: Sodium azide

Precaution of Use: This product contains Sodium azide: a POISONOUS AND HAZARDOUS SUBSTANCE which should be handled by trained staff only.

Storage: 4 °C, -20 °C

Storage Comment: Maintain refrigerated at 2-8 °C for up to 6 months. For long term storage store at -20 °C in small aliquots to prevent freeze-thaw cycles.

Expiry Date: 6 months



Flow Cytometry

Image 1. NPFF Antibody (C-term) (ABIN651444 and ABIN2840244) flow cytometric analysis of 293 cells (right histogram) compared to a negative control (left histogram). FITC-conjugated goat-anti-rabbit secondary antibodies were used for the analysis.



Western Blotting

Image 2. Western blot analysis of NPFF Antibody (C-term) (ABIN651444 and ABIN2840244) in 293 cell line lysates (35 µg/lane). NPFF (arrow) was detected using the purified Pab.