

Datasheet for ABIN651452

anti-Ribonuclease K antibody (AA 26-55)**2** Images**1** Publication[Go to Product page](#)

Overview

Quantity:	400 µL
Target:	Ribonuclease K (RNASEK)
Binding Specificity:	AA 26-55
Reactivity:	Human
Host:	Rabbit
Clonality:	Polyclonal
Conjugate:	This Ribonuclease K antibody is un-conjugated
Application:	Western Blotting (WB), Immunohistochemistry (Paraffin-embedded Sections) (IHC (p))

Product Details

Immunogen:	This RNASEK antibody is generated from rabbits immunized with a KLH conjugated synthetic peptide between 26-55 amino acids from the Central region of human RNASEK.
Clone:	RB26649
Isotype:	Ig Fraction
Predicted Reactivity:	B, M
Purification:	This antibody is purified through a protein A column, followed by peptide affinity purification.

Target Details

Target:	Ribonuclease K (RNASEK)
Alternative Name:	RNASEK (RNASEK Products)

Target Details

Background:	RNASEK is endoribonuclease which preferentially cleaves ApU and ApG phosphodiester bonds. RNASEK hydrolyzes UpU bonds at a lower rate.
Molecular Weight:	15420
Gene ID:	440400
NCBI Accession:	NP_001004333
UniProt:	Q6P5S7

Application Details

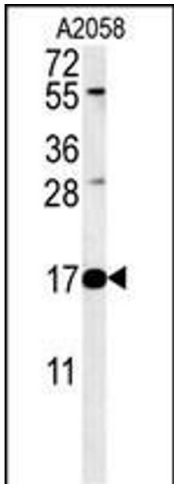
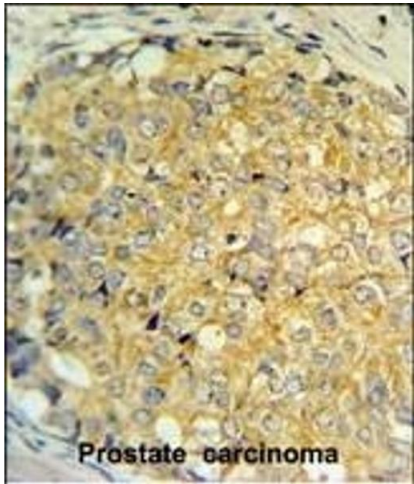
Application Notes:	WB: 1:1000. IHC-P: 1:50~100
Restrictions:	For Research Use only

Handling

Format:	Liquid
Buffer:	Purified polyclonal antibody supplied in PBS with 0.09 % (W/V) sodium azide.
Preservative:	Sodium azide
Precaution of Use:	This product contains Sodium azide: a POISONOUS AND HAZARDOUS SUBSTANCE which should be handled by trained staff only.
Storage:	4 °C,-20 °C
Storage Comment:	Maintain refrigerated at 2-8 °C for up to 6 months. For long term storage store at -20 °C in small aliquots to prevent freeze-thaw cycles.
Expiry Date:	6 months

Publications

Product cited in:	Zhang, Liu, Xu, Sun, Gong, Shao: "Neferine, an alkaloid ingredient in lotus seed embryo, inhibits proliferation of human osteosarcoma cells by promoting p38 MAPK-mediated p21 stabilization. " in: European journal of pharmacology , Vol. 677, Issue 1-3, pp. 47-54, (2012) (PubMed).
-------------------	---



Immunohistochemistry (Paraffin-embedded Sections)

Image 1. RNASEK Antibody (Center) (ABIN651452 and ABIN2840246) IHC analysis in formalin fixed and paraffin embedded human prostate carcinoma followed by peroxidase conjugation of the secondary antibody and DAB staining. This data demonstrates the use of the RNASEK Antibody (Center) for immunohistochemistry. Clinical relevance has not been evaluated.

Western Blotting

Image 2. RNASEK Antibody (Center) &65288,Cat(ABIN651452 and ABIN2840246)&65289, western blot analysis in cell line lysates (35 µg/lane). This demonstrates the RNASEK antibody detected the RNASEK protein (arrow).