

Datasheet for ABIN651454
anti-RPS26 antibody (N-Term)[Go to Product page](#)

1 Image

Overview

Quantity:	400 µL
Target:	RPS26
Binding Specificity:	AA 1-30, N-Term
Reactivity:	Human
Host:	Rabbit
Clonality:	Polyclonal
Conjugate:	This RPS26 antibody is un-conjugated
Application:	Western Blotting (WB)

Product Details

Immunogen:	This RPS26 antibody is generated from rabbits immunized with a KLH conjugated synthetic peptide between 1-30 amino acids from the N-terminal region of human RPS26.
Clone:	RB26222
Isotype:	Ig Fraction
Predicted Reactivity:	B, Pr, M, Pig, Rat, Sh
Purification:	This antibody is purified through a protein A column, followed by peptide affinity purification.

Target Details

Target:	RPS26
Alternative Name:	RPS26 (RPS26 Products)

Target Details

Background: Ribosomes, the organelles that catalyze protein synthesis, consist of a small 40S subunit and a large 60S subunit. Together these subunits are composed of 4 RNA species and approximately 80 structurally distinct proteins. This gene encodes a ribosomal protein that is a component of the 40S subunit. The protein belongs to the S26E family of ribosomal proteins. It is located in the cytoplasm. As is typical for genes encoding ribosomal proteins, there are multiple processed pseudogenes of this gene dispersed through the genome.

Molecular Weight: 13015

Gene ID: 6231

NCBI Accession: [NP_001020](#)

UniProt: [P62854](#)

Application Details

Application Notes: WB: 1:1000

Restrictions: For Research Use only

Handling

Format: Liquid

Buffer: Purified polyclonal antibody supplied in PBS with 0.09 % (W/V) sodium azide.

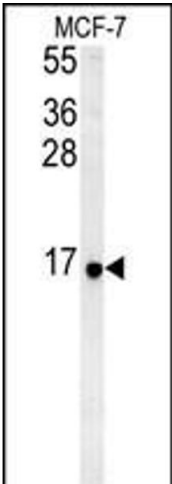
Preservative: Sodium azide

Precaution of Use: This product contains Sodium azide: a POISONOUS AND HAZARDOUS SUBSTANCE which should be handled by trained staff only.

Storage: 4 °C, -20 °C

Storage Comment: Maintain refrigerated at 2-8 °C for up to 6 months. For long term storage store at -20 °C in small aliquots to prevent freeze-thaw cycles.

Expiry Date: 6 months



Western Blotting				
Image	1.	RPS26	Antibody	(N-term)&65288,Cat(ABIN651454 and ABIN2840248)&65289,western blot analysis in MCF-7 cell line lysates (35 µg/lane). This demonstrates the RPS26 antibody detected the RPS26 protein (arrow).