

Datasheet for ABIN651455  
**anti-RSAD1 antibody (C-Term)**



[Go to Product page](#)

3 Images

## Overview

Quantity:	400 µL
Target:	RSAD1
Binding Specificity:	AA 299-328, C-Term
Reactivity:	Human
Host:	Rabbit
Clonality:	Polyclonal
Conjugate:	This RSAD1 antibody is un-conjugated
Application:	Western Blotting (WB), Flow Cytometry (FACS), Immunohistochemistry (Paraffin-embedded Sections) (IHC (p))

## Product Details

Immunogen:	This RSAD1 antibody is generated from rabbits immunized with a KLH conjugated synthetic peptide between 299-328 amino acids from the C-terminal region of human RSAD1.
Clone:	RB26656
Isotype:	Ig Fraction
Predicted Reactivity:	M
Purification:	This antibody is purified through a protein A column, followed by peptide affinity purification.

## Target Details

Target:	RSAD1
---------	-------

## Target Details

---

Alternative Name:	RSAD1 ( <a href="#">RSAD1 Products</a> )
Background:	RSAD1 may be involved in porphyrin cofactor biosynthesis.
Molecular Weight:	48714
Gene ID:	55316
NCBI Accession:	<a href="#">NP_060816</a>
UniProt:	<a href="#">Q9HA92</a>

## Application Details

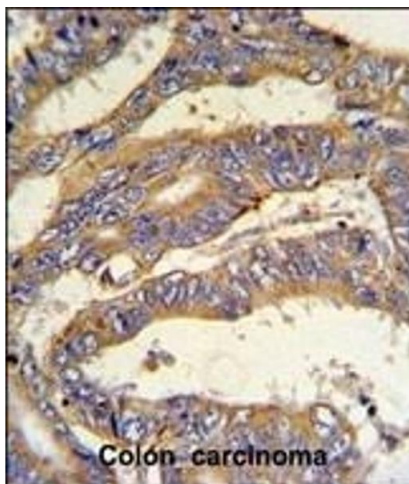
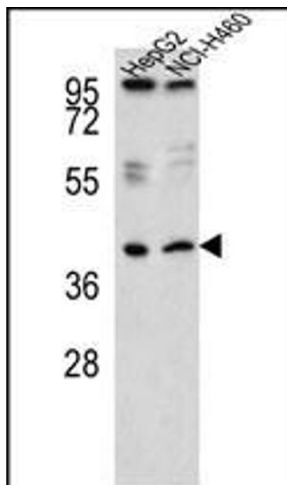
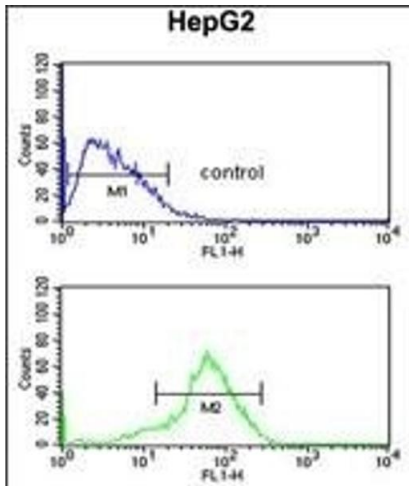
---

Application Notes:	WB: 1:1000. IHC-P: 1:50~100. FC: 1:10~50
Restrictions:	For Research Use only

## Handling

---

Format:	Liquid
Buffer:	Purified polyclonal antibody supplied in PBS with 0.09 % (W/V) sodium azide.
Preservative:	Sodium azide
Precaution of Use:	This product contains Sodium azide: a POISONOUS AND HAZARDOUS SUBSTANCE which should be handled by trained staff only.
Storage:	4 °C,-20 °C
Storage Comment:	Maintain refrigerated at 2-8 °C for up to 6 months. For long term storage store at -20 °C in small aliquots to prevent freeze-thaw cycles.
Expiry Date:	6 months



### Flow Cytometry

**Image 1.** RSAD1 Antibody (C-term) (ABIN651455 and ABIN2840249) flow cytometric analysis of HepG2 cells (bottom histogram) compared to a negative control cell (top histogram). FITC-conjugated goat-anti-rabbit secondary antibodies were used for the analysis.

### Western Blotting

**Image 2.** Western blot analysis of RSAD1 Antibody (C-term) (ABIN651455 and ABIN2840249) in HepG2, NCI- cell line lysates (35 µg/lane). RSAD1 (arrow) was detected using the purified Pab.

### Immunohistochemistry (Paraffin-embedded Sections)

**Image 3.** RSAD1 Antibody (C-term) (ABIN651455 and ABIN2840249) IHC analysis in formalin fixed and paraffin embedded human colon carcinoma followed by peroxidase conjugation of the secondary antibody and DAB staining. This data demonstrates the use of the RSAD1 Antibody (C-term) for immunohistochemistry. Clinical relevance has not been evaluated.