

Datasheet for ABIN651457
anti-RSP02 antibody (C-Term)

3 Images

[Go to Product page](#)

Overview

Quantity:	400 µL
Target:	RSP02
Binding Specificity:	AA 190-218, C-Term
Reactivity:	Human
Host:	Rabbit
Clonality:	Polyclonal
Conjugate:	This RSP02 antibody is un-conjugated
Application:	Western Blotting (WB), Flow Cytometry (FACS), Immunohistochemistry (Paraffin-embedded Sections) (IHC (p))

Product Details

Immunogen:	This RSP02 antibody is generated from rabbits immunized with a KLH conjugated synthetic peptide between 190-218 amino acids from the C-terminal region of human RSP02.
Clone:	RB26400
Isotype:	Ig Fraction
Predicted Reactivity:	M
Purification:	This antibody is purified through a protein A column, followed by peptide affinity purification.

Target Details

Target:	RSP02
---------	-------

Target Details

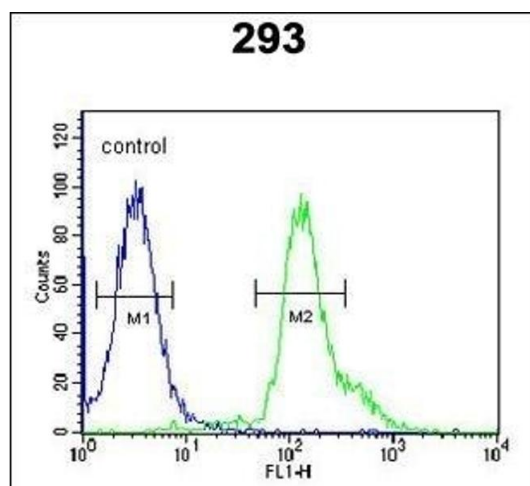
Alternative Name:	RSP02 (RSP02 Products)
Background:	R-spondins (RSPOs), such as RSP02, are secreted proteins that regulate beta-catenin (CTNNB1, MIM 116806) signaling.
Molecular Weight:	28315
Gene ID:	340419
NCBI Accession:	NP_848660
UniProt:	Q6UXX9

Application Details

Application Notes:	WB: 1:1000. IHC-P: 1:50~100. FC: 1:10~50
Restrictions:	For Research Use only

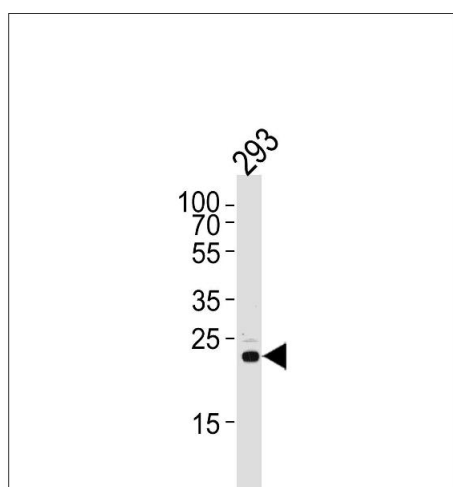
Handling

Format:	Liquid
Buffer:	Purified polyclonal antibody supplied in PBS with 0.09 % (W/V) sodium azide.
Preservative:	Sodium azide
Precaution of Use:	This product contains Sodium azide: a POISONOUS AND HAZARDOUS SUBSTANCE which should be handled by trained staff only.
Storage:	4 °C,-20 °C
Storage Comment:	Maintain refrigerated at 2-8 °C for up to 6 months. For long term storage store at -20 °C in small aliquots to prevent freeze-thaw cycles.
Expiry Date:	6 months



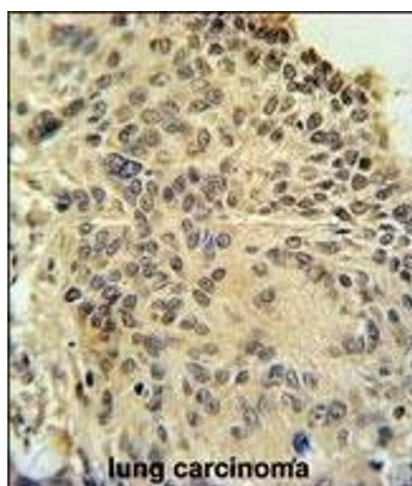
Flow Cytometry

Image 1. RSPO2 Antibody (C-term) (ABIN651457 and ABIN2840250) flow cytometric analysis of 293 cells (right histogram) compared to a negative control cell (left histogram). FITC-conjugated goat-anti-rabbit secondary antibodies were used for the analysis.



Western Blotting

Image 2. Western blot analysis of lysate from 293 cell line, using RSPO2 Antibody (C-term) (ABIN651457 and ABIN2840250). (ABIN651457 and ABIN2840250) was diluted at 1:1000 at each lane. A goat anti-rabbit IgG H&L(HRP) at 1:5000 dilution was used as the secondary antibody. Lysate at 35 µg per lane.



Immunohistochemistry (Paraffin-embedded Sections)

Image 3. RSPO2 Antibody (C-term) (ABIN651457 and ABIN2840250) immunohistochemistry analysis in formalin fixed and paraffin embedded human lung carcinoma followed by peroxidase conjugation of the secondary antibody and DAB staining. This data demonstrates the use of the RSPO2 Antibody (C-term) for immunohistochemistry. Clinical relevance has not been evaluated.