



[Go to Product page](#)

Datasheet for ABIN651461

## anti-SFT2D3 antibody (N-Term)

### 3 Images

#### Overview

Quantity:	400 µL
Target:	SFT2D3
Binding Specificity:	AA 14-42, N-Term
Reactivity:	Human
Host:	Rabbit
Clonality:	Polyclonal
Conjugate:	This SFT2D3 antibody is un-conjugated
Application:	Western Blotting (WB), Flow Cytometry (FACS), Immunohistochemistry (Paraffin-embedded Sections) (IHC (p))

#### Product Details

Immunogen:	This SFT2D3 antibody is generated from rabbits immunized with a KLH conjugated synthetic peptide between 14-42 amino acids from the N-terminal region of human SFT2D3.
Clone:	RB26636
Isotype:	Ig Fraction
Purification:	This antibody is purified through a protein A column, followed by peptide affinity purification.

#### Target Details

Target:	SFT2D3
Alternative Name:	SFT2D3 ( <a href="#">SFT2D3 Products</a> )

## Target Details

---

Background:	SFT2D3 may be involved in fusion of retrograde transport vesicles derived from an endocytic compartment with the Golgi complex.
Molecular Weight:	21790
Gene ID:	84826
NCBI Accession:	<a href="#">NP_116129</a>
UniProt:	<a href="#">Q58719</a>

## Application Details

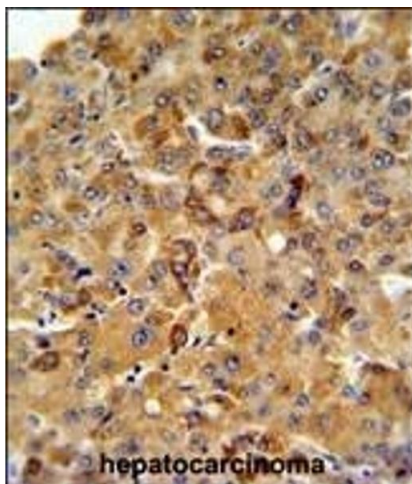
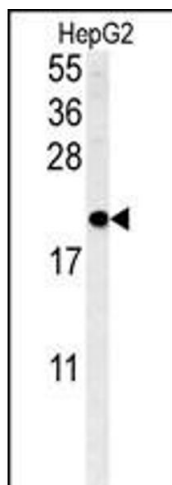
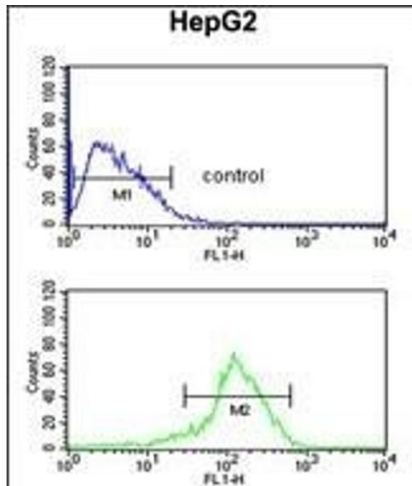
---

Application Notes:	WB: 1:1000. IHC-P: 1:50~100. FC: 1:10~50
Restrictions:	For Research Use only

## Handling

---

Format:	Liquid
Buffer:	Purified polyclonal antibody supplied in PBS with 0.09 % (W/V) sodium azide.
Preservative:	Sodium azide
Precaution of Use:	This product contains Sodium azide: a POISONOUS AND HAZARDOUS SUBSTANCE which should be handled by trained staff only.
Storage:	4 °C,-20 °C
Storage Comment:	Maintain refrigerated at 2-8 °C for up to 6 months. For long term storage store at -20 °C in small aliquots to prevent freeze-thaw cycles.
Expiry Date:	6 months



### Flow Cytometry

**Image 1.** SFT2D3 Antibody (N-term) (ABIN651461 and ABIN2840253) flow cytometric analysis of HepG2 cells (bottom histogram) compared to a negative control cell (top histogram). FITC-conjugated goat-anti-rabbit secondary antibodies were used for the analysis.

### Western Blotting

**Image 2.** SFT2D3 Antibody (N-term) (ABIN651461 and ABIN2840253) western blot analysis in HepG2 cell line lysates (35 µg/lane). This demonstrates the SFT2D3 antibody detected the SFT2D3 protein (arrow).

### Immunohistochemistry (Paraffin-embedded Sections)

**Image 3.** SFT2D3 Antibody (N-term) (ABIN651461 and ABIN2840253) IHC analysis in formalin fixed and paraffin embedded human hepatocarcinoma followed by peroxidase conjugation of the secondary antibody and DAB staining. This data demonstrates the use of the SFT2D3 Antibody (N-term) for immunohistochemistry. Clinical relevance has not been evaluated.