

Datasheet for ABIN651464
anti-SMAGP antibody (AA 46-75)[Go to Product page](#)

3 Images

Overview

Quantity:	400 µL
Target:	SMAGP
Binding Specificity:	AA 46-75
Reactivity:	Human
Host:	Rabbit
Clonality:	Polyclonal
Conjugate:	This SMAGP antibody is un-conjugated
Application:	Western Blotting (WB), Flow Cytometry (FACS), Immunohistochemistry (Paraffin-embedded Sections) (IHC (p))

Product Details

Immunogen:	This SMAGP antibody is generated from rabbits immunized with a KLH conjugated synthetic peptide between 46-75 amino acids from the Central region of human SMAGP.
Clone:	RB26690
Isotype:	Ig Fraction
Purification:	This antibody is purified through a protein A column, followed by peptide affinity purification.

Target Details

Target:	SMAGP
Alternative Name:	SMAGP (SMAGP Products)

Target Details

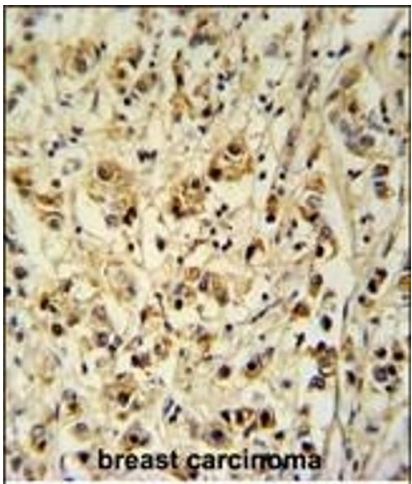
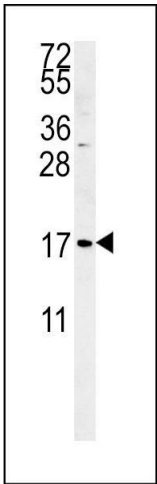
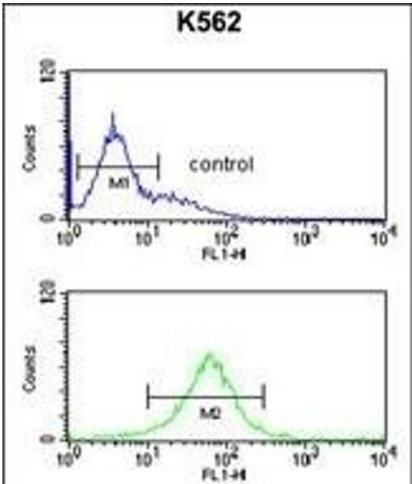
Background:	SMAGP may play a role in epithelial cell-cell contacts. SMAGP may play a role in tumor invasiveness and metastasis formation.
Molecular Weight:	10679
Gene ID:	57228
NCBI Accession:	NP_001026798 , NP_001029045
UniProt:	Q0VAQ4

Application Details

Application Notes:	WB: 1:1000. IHC-P: 1:50~100. FC: 1:10~50
Restrictions:	For Research Use only

Handling

Format:	Liquid
Buffer:	Purified polyclonal antibody supplied in PBS with 0.09 % (W/V) sodium azide.
Preservative:	Sodium azide
Precaution of Use:	This product contains Sodium azide: a POISONOUS AND HAZARDOUS SUBSTANCE which should be handled by trained staff only.
Storage:	4 °C,-20 °C
Storage Comment:	Maintain refrigerated at 2-8 °C for up to 6 months. For long term storage store at -20 °C in small aliquots to prevent freeze-thaw cycles.
Expiry Date:	6 months



Flow Cytometry

Image 1. SGP Antibody (Center) (ABIN651464 and ABIN2840255) flow cytometric analysis of K562 cells (bottom histogram) compared to a negative control cell (top histogram). FITC-conjugated goat-anti-rabbit secondary antibodies were used for the analysis.

Western Blotting

Image 2. SGP Antibody (Center) & 65288, Cat (ABIN651464 and ABIN2840255) & 65289, western blot analysis in K562 cell line lysates (35 µg/lane). This demonstrates the SGP antibody detected the SGP protein (arrow).

Immunohistochemistry (Paraffin-embedded Sections)

Image 3. SGP Antibody (Center) (ABIN651464 and ABIN2840255) immunohistochemistry analysis in forlin fixed and paraffin embedded hun breast carcino followed by peroxidase conjugation of the secondary antibody and DAB staining. This data demonstrates the use of the SGP Antibody (Center) for immunohistochemistry. Clinical relevance has not been evaluated.