

Datasheet for ABIN651493  
**anti-SLC7A6 antibody (C-Term)**

## 2 Images

[Go to Product page](#)

## Overview

Quantity:	400 µL
Target:	SLC7A6
Binding Specificity:	AA 487-515, C-Term
Reactivity:	Human
Host:	Rabbit
Clonality:	Polyclonal
Conjugate:	This SLC7A6 antibody is un-conjugated
Application:	Western Blotting (WB), Flow Cytometry (FACS)

## Product Details

Immunogen:	This YLAT2 antibody is generated from rabbits immunized with a KLH conjugated synthetic peptide between 487-515 amino acids from the C-terminal region of human YLAT2.
Clone:	RB26528
Isotype:	Ig Fraction
Purification:	This antibody is purified through a protein A column, followed by peptide affinity purification.

## Target Details

Target:	SLC7A6
Alternative Name:	YLAT2 ( <a href="#">SLC7A6 Products</a> )
Background:	This protein involved in the sodium-independent uptake of dibasic amino acids and sodium-

## Target Details

dependent uptake of some neutral amino acids. It requires co-expression with SLC3A2/4F2hc to mediate the uptake of arginine, leucine and glutamine. It also acts as an arginine/glutamine exchanger, following an antiport mechanism for amino acid transport, influencing arginine release in exchange for extracellular amino acids. It plays a role in nitric oxide synthesis in human umbilical vein endothelial cells (HUVECs) via transport of L-arginine. It involved in the transport of L-arginine in monocytes and reduces uptake of ornithine in retinal pigment epithelial (RPE) cells.

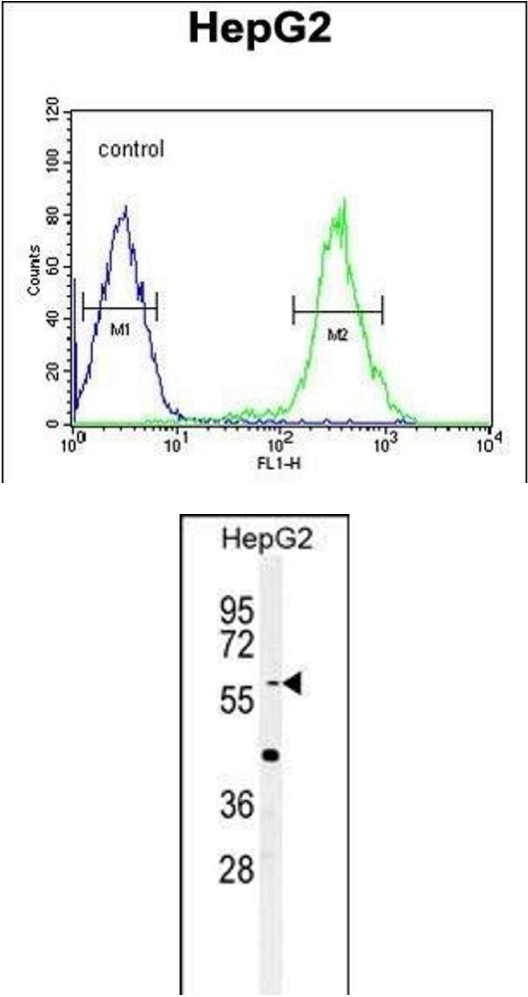
Molecular Weight:	56828
Gene ID:	9057
NCBI Accession:	<a href="#">NP_001070253</a> , <a href="#">NP_003974</a>
UniProt:	<a href="#">Q92536</a>

## Application Details

Application Notes:	WB: 1:1000. FC: 1:10~50
Restrictions:	For Research Use only

## Handling

Format:	Liquid
Buffer:	Purified polyclonal antibody supplied in PBS with 0.09 % (W/V) sodium azide.
Preservative:	Sodium azide
Precaution of Use:	This product contains Sodium azide: a POISONOUS AND HAZARDOUS SUBSTANCE which should be handled by trained staff only.
Storage:	4 °C,-20 °C
Storage Comment:	Maintain refrigerated at 2-8 °C for up to 6 months. For long term storage store at -20 °C in small aliquots to prevent freeze-thaw cycles.
Expiry Date:	6 months



Flow Cytometry

**Image 1.** YLAT2 Antibody (C-term) (ABIN651493 and ABIN2840266) flow cytometric analysis of HepG2 cells (right histogram) compared to a negative control cell (left histogram).FITC-conjugated goat-anti-rabbit secondary antibodies were used for the analysis.

Western Blotting

**Image 2.** Western blot analysis of YLAT2 Antibody (C-term) (ABIN651493 and ABIN2840266) in HepG2 cell line lysates (35 µg/lane).YLAT2 (arrow) was detected using the purified Pab.